

EHM2 Polyclonal Antibody

Purified Rabbit Polyclonal Antibody (Pab)

Catalog # AP55052

Specification

EHM2 Polyclonal Antibody - Product Information

Application	WB, IHC-P, IHC-F, IF, ICC, E
Primary Accession	Q9H329
Reactivity	Rat, Dog, Bovine
Host	Rabbit
Clonality	Polyclonal
Calculated MW	100 KDa
Physical State	Liquid
Immunogen	KLH conjugated synthetic peptide derived from human EPB41L4B
Epitope Specificity	351-450/900
Isotype	IgG
Purity	
affinity purified by Protein A	
Buffer	0.01M TBS (pH7.4) with 1% BSA, 0.02% Proclin300 and 50% Glycerol.
SUBCELLULAR LOCATION	Cytoplasm; cytoskeleton.
SIMILARITY	Contains 1 FERM domain.
Important Note	This product as supplied is intended for research use only, not for use in human, therapeutic or diagnostic applications.

Background Descriptions

Predicted to be a structural constituent of cytoskeleton. Involved in several processes, including positive regulation of cell adhesion; positive regulation of keratinocyte migration; and wound healing. Acts upstream of or within actomyosin structure organization. Located in apical part of cell; cytosol; and plasma membrane. [provided by Alliance of Genome Resources, Apr 2022]

EHM2 Polyclonal Antibody - Additional Information

Gene ID 54566

Other Names

Band 4.1-like protein 4B, Erythrocyte membrane protein band 4.1-like 4B {ECO:0000312|HGNC:HGNC:19818}, FERM-containing protein CG1, Protein EHM2, EPB41L4B (http://www.genenames.org/cgi-bin/gene_symbol_report?hgnc_id=19818)

Dilution

WB~~1:1000<br \>IHC-P~~N/A<br \>IHC-F~~N/A<br \>IF~~1:50~200<br \>ICC~~N/A<br \>E~~N/A

Format

0.01M TBS(pH7.4), 0.09% (W/V) sodium azide and 50% Glyce

Storage

Store at -20 °C for one year. Avoid repeated freeze/thaw cycles. When reconstituted in sterile pH 7.4 0.01M PBS or diluent of antibody the antibody is stable for at least two weeks at 2-4 °C.

EHM2 Polyclonal Antibody - Protein Information

Name EPB41L4B ([HGNC:19818](#))

Function

Up-regulates the activity of the Rho guanine nucleotide exchange factor ARHGEF18 (By similarity). Involved in the regulation of the circumferential actomyosin belt in epithelial cells (PubMed:22006950). Promotes cellular adhesion, migration and motility in vitro and may play a role in wound healing (PubMed:23664528). May have a role in mediating cytoskeletal changes associated with steroid- induced cell differentiation (PubMed:14521927).

Cellular Location

Cytoplasm. Cell junction, tight junction Note=Accumulates along apical cell-cell boundaries and is also detected in the cytoplasm in a punctate manner.

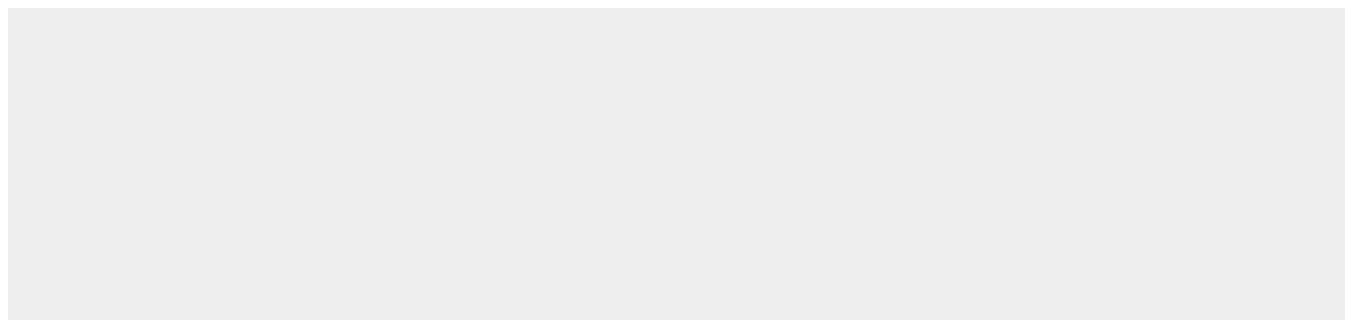
Tissue Location

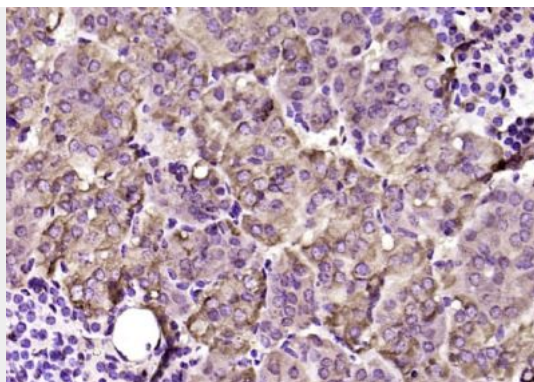
Expressed at higher levels in acute wounds than chronic wounds with increased expression in healing wounds, especially at the leading wound edge (PubMed:23664528). Isoform 1 is highly expressed in brain. Isoform 2 is highly expressed in testis with lower levels in prostate and breast (PubMed:14521927)

EHM2 Polyclonal Antibody - Protocols

Provided below are standard protocols that you may find useful for product applications.

- [Western Blot](#)
- [Blocking Peptides](#)
- [Dot Blot](#)
- [Immunohistochemistry](#)
- [Immunofluorescence](#)
- [Immunoprecipitation](#)
- [Flow Cytometry](#)
- [Cell Culture](#)

EHM2 Polyclonal Antibody - Images



Paraformaldehyde-fixed, paraffin embedded (mouse adrenal gland); Antigen retrieval by boiling in sodium citrate buffer (pH6.0) for 15min; Block endogenous peroxidase by 3% hydrogen peroxide for 20 minutes; Blocking buffer (normal goat serum) at 37°C for 30min; Antibody incubation with (EHM2) Polyclonal Antibody, Unconjugated (bs-13065R) at 1:200 overnight at 4°C, followed by operating according to SP Kit(Rabbit) (sp-0023) instructions and DAB staining.