

ENPP5 Polyclonal Antibody
Purified Rabbit Polyclonal Antibody (Pab)
Catalog # AP55055

Specification

ENPP5 Polyclonal Antibody - Product Information

Application	WB, IHC-P, IHC-F, IF, ICC
Primary Accession	O9UJA9
Reactivity	Rat, Dog
Host	Rabbit
Clonality	Polyclonal
Calculated MW	52 KDa
Physical State	Liquid
Immunogen	KLH conjugated synthetic peptide derived from mouse ENPP5
Epitope Specificity	101-200/477
Isotype	IgG
Purity	
affinity purified by Protein A	
Buffer	0.01M TBS (pH7.4) with 1% BSA, 0.02% Proclin300 and 50% Glycerol.
SUBCELLULAR LOCATION	Secreted. Membrane.
SIMILARITY	Belongs to the nucleotide pyrophosphatase/phosphodiesterase family.
Post-translational modifications	N-glycosylated.
Important Note	This product as supplied is intended for research use only, not for use in human, therapeutic or diagnostic applications.

Background Descriptions

May play a role in neuronal cell communication. Lacks nucleotide pyrophosphatase and lysopholipase D activity.

ENPP5 Polyclonal Antibody - Additional Information

Gene ID 59084

Other Names

Ectonucleotide pyrophosphatase/phosphodiesterase family member 5, E-NPP 5, NPP-5, 3.1.-., ENPP5 (http://www.genenames.org/cgi-bin/gene_symbol_report?hgnc_id=13717)
[HGNC:13717](#))

Dilution

dilution_WB: WB ~ 1:1000
dilution_IHC-P: IHC-P ~ N/A
dilution_IHC-F: IHC-F ~ N/A
dilution_IF: IF ~ 1:50 ~ 200
dilution_ICC: ICC ~ N/A

Format

0.01M TBS(pH7.4), 0.09% (W/V) sodium azide and 50% Glycerol

Storage

Store at -20 °C for one year. Avoid repeated freeze/thaw cycles. When reconstituted in sterile pH 7.4 0.01M PBS or diluent of antibody the antibody is stable for at least two weeks at 2-4 °C.

ENPP5 Polyclonal Antibody - Protein Information

Name ENPP5 ([HGNC:13717](#))

Function

Can hydrolyze NAD but cannot hydrolyze nucleotide di- and triphosphates. Lacks lysopholipase D activity. May play a role in neuronal cell communication.

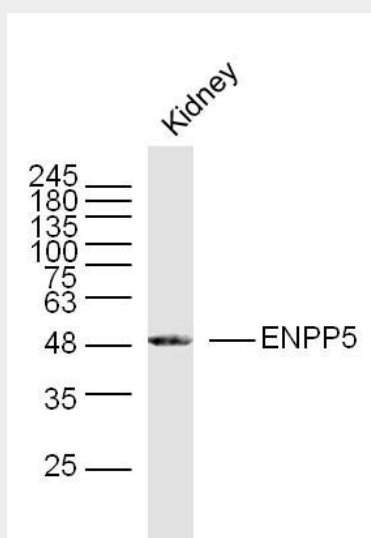
Cellular Location

Secreted. Membrane; Single-pass membrane protein

ENPP5 Polyclonal Antibody - Protocols

Provided below are standard protocols that you may find useful for product applications.

- [Western Blot](#)
- [Blocking Peptides](#)
- [Dot Blot](#)
- [Immunohistochemistry](#)
- [Immunofluorescence](#)
- [Immunoprecipitation](#)
- [Flow Cytometry](#)
- [Cell Culture](#)

ENPP5 Polyclonal Antibody - Images

Sample: kidney (Mouse) Lysate at 40 ug
Primary: Anti-ENPP5(bs-13075R) at 1/300 dilution

Secondary: IRDye800CW Goat Anti-Rabbit IgG at 1/20000 dilution
Predicted band size: 52 kD
Observed band size: 50 kD