

ETL Polyclonal Antibody
Purified Rabbit Polyclonal Antibody (Pab)
Catalog # AP55063**Specification**

ETL Polyclonal Antibody - Product Information

Application	IF, IHC-P
Primary Accession	Q9HBW9
Reactivity	Rat
Host	Rabbit
Clonality	Polyclonal
Calculated MW	77811

ETL Polyclonal Antibody - Additional Information**Gene ID** 64123**Other Names**

Adhesion G protein-coupled receptor L4, EGF, latrophilin and seven transmembrane domain-containing protein 1, EGF-TM7-latrophilin-related protein, ETL protein, ADGRL4 {ECO:0000303|PubMed:25713288}, ELTD1, ETL

Format

0.01M TBS(pH7.4), 0.09% (W/V) sodium azide and 50% Glyce

Storage

Store at -20 °C for one year. Avoid repeated freeze/thaw cycles. When reconstituted in sterile pH 7.4 0.01M PBS or diluent of antibody the antibody is stable for at least two weeks at 2-4 °C.

ETL Polyclonal Antibody - Protein Information**Name** ADGRL4 {ECO:0000303|PubMed:25713288}**Synonyms** ELTD1, ETL**Function**

Endothelial orphan receptor that acts as a key regulator of angiogenesis.

Cellular Location

Cell membrane; Multi-pass membrane protein

Tissue Location

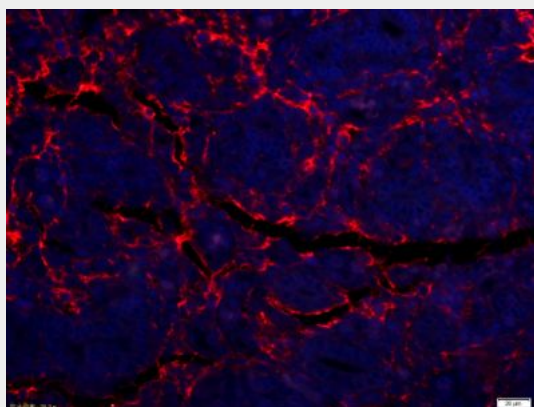
Detected in the majority of epithelial cells in tumor and normal tissues. Expressed also in human umbilical vein endothelial cells.

ETL Polyclonal Antibody - Protocols

Provided below are standard protocols that you may find useful for product applications.

- [Western Blot](#)
- [Blocking Peptides](#)
- [Dot Blot](#)
- [Immunohistochemistry](#)
- [Immunofluorescence](#)
- [Immunoprecipitation](#)
- [Flow Cytometry](#)
- [Cell Culture](#)

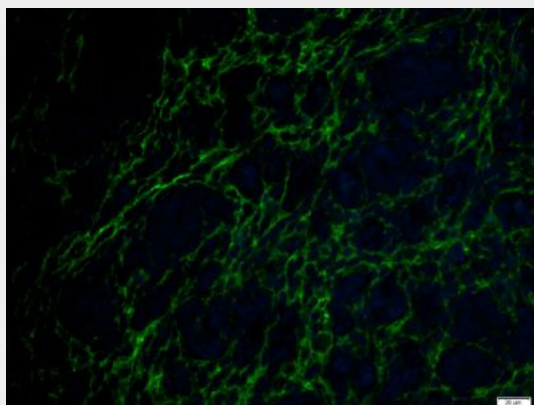
ETL Polyclonal Antibody - Images



Tissue/cell: rat uterus tissue;4% Paraformaldehyde-fixed and paraffin-embedded;

Antigen retrieval: citrate buffer (0.01M, pH 6.0), Boiling bathing for 15min; Blocking buffer (normal goat serum,C-0005) at 37°C for 20 min;

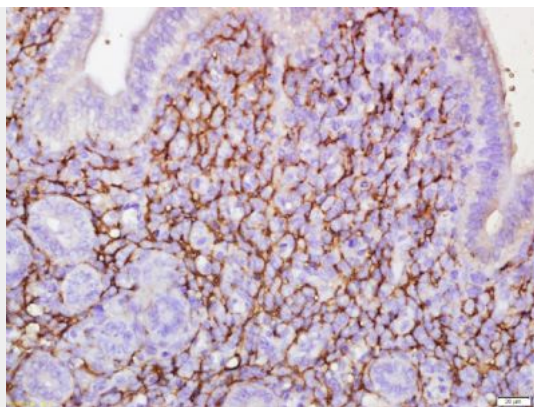
Incubation: Anti-ETL Polyclonal Antibody, Unconjugated(bs-13111R) 1:200, overnight at 4°C; The secondary antibody was Goat Anti-Rabbit IgG, Cy3 conjugated(bs-0295G-Cy3)used at 1:200 dilution for 40 minutes at 37°C. DAPI(5ug/ml,blue,C-0033) was used to stain the cell nuclei



Tissue/cell: rat uterus tissue;4% Paraformaldehyde-fixed and paraffin-embedded;

Antigen retrieval: citrate buffer (0.01M, pH 6.0), Boiling bathing for 15min; Blocking buffer (normal goat serum,C-0005) at 37°C for 20 min;

Incubation: Anti-ETL Polyclonal Antibody, Unconjugated(bs-13111R) 1:200, overnight at 4°C; The secondary antibody was Goat Anti-Rabbit IgG, Cy3 conjugated(bs-0295G-FITC)used at 1:200 dilution for 40 minutes at 37°C. DAPI(5ug/ml,blue,C-0033) was used to stain the cell nuclei



Tissue/cell: rat uterus tissue ; 4% Paraformaldehyde-fixed and paraffin-embedded;

Antigen retrieval: citrate buffer (0.01M, pH 6.0), Boiling bathing for 15min; Block endogenous peroxidase by 3% Hydrogen peroxide for 30min; Blocking buffer (normal goat serum,C-0005) at 37°C for 20 min;

Incubation: Anti-ETL Polyclonal Antibody, Unconjugated(bs-13111R) 1:500, overnight at 4°C, followed by conjugation to the secondary antibody(SP-0023) and DAB(C-0010) staining