

**KLF17 Antibody (C-term)**  
**Affinity Purified Rabbit Polyclonal Antibody (Pab)**  
**Catalog # AP5507b****Specification**

---

**KLF17 Antibody (C-term) - Product Information**

Application	FC, WB,E
Primary Accession	<a href="#">Q5JT82</a>
Other Accession	<a href="#">NP_775755.3</a>
Reactivity	Human
Host	Rabbit
Clonality	Polyclonal
Isotype	Rabbit IgG
Antigen Region	243-271

**KLF17 Antibody (C-term) - Additional Information****Gene ID** 128209**Other Names**

Krueppel-like factor 17, Zinc finger protein 393, KLF17, ZNF393

**Target/Specificity**

This KLF17 antibody is generated from rabbits immunized with a KLH conjugated synthetic peptide between 243-271 amino acids of human KLF17.

**Dilution**

FC~~1:10~50

WB~~1:1000

E~~Use at an assay dependent concentration.

**Format**

Purified polyclonal antibody supplied in PBS with 0.09% (W/V) sodium azide. This antibody is purified through a protein A column, followed by peptide affinity purification.

**Storage**

Maintain refrigerated at 2-8°C for up to 2 weeks. For long term storage store at -20°C in small aliquots to prevent freeze-thaw cycles.

**Precautions**

KLF17 Antibody (C-term) is for research use only and not for use in diagnostic or therapeutic procedures.

**KLF17 Antibody (C-term) - Protein Information****Name** KLF17**Synonyms** ZNF393

**Function** Transcription repressor that binds to the promoter of target genes and prevents their expression. Acts as a negative regulator of epithelial-mesenchymal transition and metastasis in breast cancer. Specifically binds the 5'-CACCC-3' sequence in the promoter of ID1, a key metastasis regulator in breast cancer, and repress its expression. May be a germ cell-specific transcription factor that plays important roles in spermatid differentiation and oocyte development (By similarity).

**Cellular Location**

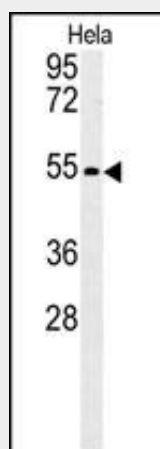
Nucleus.

**KLF17 Antibody (C-term) - Protocols**

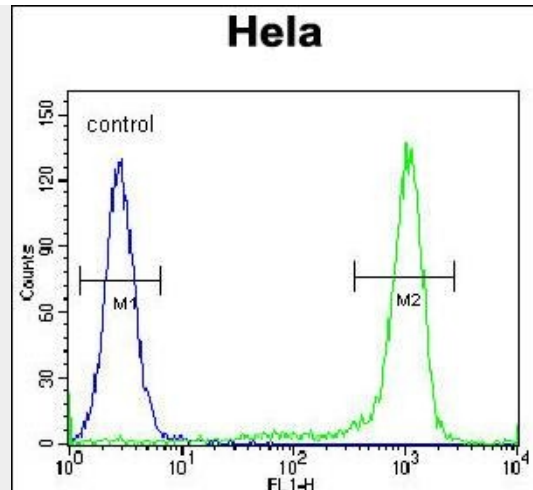
Provided below are standard protocols that you may find useful for product applications.

- [Western Blot](#)
- [Blocking Peptides](#)
- [Dot Blot](#)
- [Immunohistochemistry](#)
- [Immunofluorescence](#)
- [Immunoprecipitation](#)
- [Flow Cytometry](#)
- [Cell Culture](#)

**KLF17 Antibody (C-term) - Images**



KLF17 Antibody (C-term) (Cat.#AP5507b) western blot analysis in HeLa cell line lysates (35ug/lane). This demonstrates the KLF17 antibody detected the KLF17 protein (arrow).



KLF17 Antibody (C-term) (Cat. #AP5507b) flow cytometric analysis of HeLa cells (right histogram) compared to a negative control cell (left histogram). FITC-conjugated goat-anti-rabbit secondary antibodies were used for the analysis.

#### **KLF17 Antibody (C-term) - Background**

KLF17 binds G/C-rich sites via its zinc fingers and activates transcription from CACCC-box elements. It may be a germ cell-specific transcription factor that plays important roles in spermatid differentiation and oocyte development.

#### **KLF17 Antibody (C-term) - References**

Gumireddy, K., et al. Nat. Cell Biol. 11(11):1297-1304(2009) van Vliet, J., et al. Genomics 87(4):474-482(2006) Yan, W., et al. Mech. Dev. 118 (1-2), 233-239 (2002)

#### **KLF17 Antibody (C-term) - Citations**

- [Reduced expression of Krüppel-like factor 17 is related to tumor growth and poor prognosis in lung adenocarcinoma.](#)