

**GABA A receptor pi Polyclonal Antibody**  
**Purified Rabbit Polyclonal Antibody (Pab)**  
**Catalog # AP55108****Specification**

---

**GABA A receptor pi Polyclonal Antibody - Product Information**

Application	WB
Primary Accession	<a href="#">O00591</a>
Reactivity	Rat, Pig, Bovine
Host	Rabbit
Clonality	Polyclonal
Calculated MW	50640

**GABA A receptor pi Polyclonal Antibody - Additional Information****Gene ID** 2568**Other Names**

Gamma-aminobutyric acid receptor subunit pi, GABA(A) receptor subunit pi, GABRP

**Format**

0.01M TBS(pH7.4), 0.09% (W/V) sodium azide and 50% Glyce

**Storage**

Store at -20 °C for one year. Avoid repeated freeze/thaw cycles. When reconstituted in sterile pH 7.4 0.01M PBS or diluent of antibody the antibody is stable for at least two weeks at 2-4 °C.

**GABA A receptor pi Polyclonal Antibody - Protein Information****Name** GABRP**Function**

GABA, the major inhibitory neurotransmitter in the vertebrate brain, mediates neuronal inhibition by binding to the GABA/benzodiazepine receptor and opening an integral chloride channel. In the uterus, the function of the receptor appears to be related to tissue contractility. The binding of this pi subunit with other GABA(A) receptor subunits alters the sensitivity of recombinant receptors to modulatory agents such as pregnanolone.

**Cellular Location**

Postsynaptic cell membrane; Multi-pass membrane protein. Cell membrane; Multi-pass membrane protein

**Tissue Location**

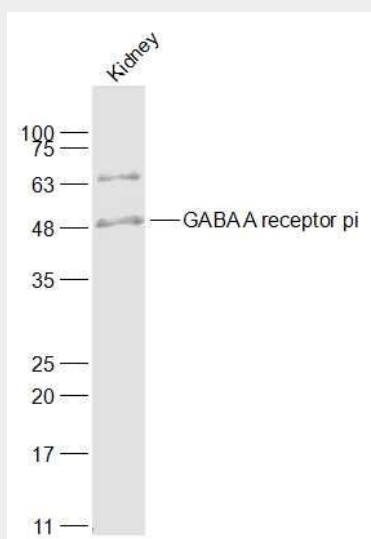
Most abundant in the uterus, also expressed in lung, thymus and prostate

**GABA A receptor pi Polyclonal Antibody - Protocols**

Provided below are standard protocols that you may find useful for product applications.

- [Western Blot](#)
- [Blocking Peptides](#)
- [Dot Blot](#)
- [Immunohistochemistry](#)
- [Immunofluorescence](#)
- [Immunoprecipitation](#)
- [Flow Cytometry](#)
- [Cell Culture](#)

#### **GABA A receptor pi Polyclonal Antibody - Images**



**Sample:**

Kidney(Mouse) Lysate at 40 ug

Primary: Anti-GABA A receptor pi (bs-13257R) at 1/1000 dilution

Secondary: IRDye800CW Goat Anti-Rabbit IgG at 1/20000 dilution

Predicted band size: 49 kD

Observed band size: 49 kD