

**GABA Transporter 3 Polyclonal Antibody**  
**Purified Rabbit Polyclonal Antibody (Pab)**  
**Catalog # AP55109**

**Specification**

**GABA Transporter 3 Polyclonal Antibody - Product Information**

Application	WB, IHC-P, IHC-F, IF, ICC, E
Primary Accession	<a href="#">P48066</a>
Reactivity	Rat
Host	Rabbit
Clonality	Polyclonal
Calculated MW	71 KDa
Physical State	Liquid
Immunogen	KLH conjugated synthetic peptide derived from human GABA Transporter 3/GAT 3
Epitope Specificity	531-632/632
Isotype	IgG
<b>Purity</b>	
affinity purified by Protein A	
Buffer	0.01M TBS (pH7.4) with 1% BSA, 0.02% Proclin300 and 50% Glycerol.
SUBCELLULAR LOCATION	Membrane; Multi-pass membrane protein.
SIMILARITY	Belongs to the sodium:neurotransmitter symporter (SNF) (TC 2.A.22) family. SLC6A11 subfamily.
Important Note	This product as supplied is intended for research use only, not for use in human, therapeutic or diagnostic applications.

**Background Descriptions**

Gamma-aminobutyric acid (GABA) is a major inhibitory neurotransmitter. GABAergic neurotransmission is terminated by the uptake of GABA into the presynaptic terminal and the surrounding astroglial cells by sodium-dependent transporters, such as SLC6A11 (Borden et al., 1994 [PubMed 7874447]).[supplied by OMIM, Nov 2010]

**GABA Transporter 3 Polyclonal Antibody - Additional Information**

**Gene ID** 6538

**Other Names**

Sodium- and chloride-dependent GABA transporter 3, GAT-3, Solute carrier family 6 member 11, SLC6A11, GABT3, GAT3

**Target/Specificity**

Widespread distribution in the brain.

**Dilution**

<span class = "dilution\_WB">WB~~1:1000</span><br \><span class = "dilution\_IHC-P">IHC-P~~N/A</span><br \><span class =

=<span class="dilution\_IHC-F">IHC-F~~N/A</span><br \><span class="dilution\_IF">IF~~1:50~200</span><br \><span class="dilution\_ICC">ICC~~N/A</span><br \><span class="dilution\_E">E~~N/A</span>

**Format**

0.01M TBS(pH7.4), 0.09% (W/V) sodium azide and 50% Glyce

**Storage**

Store at -20 °C for one year. Avoid repeated freeze/thaw cycles. When reconstituted in sterile pH 7.4 0.01M PBS or diluent of antibody the antibody is stable for at least two weeks at 2-4 °C.

**GABA Transporter 3 Polyclonal Antibody - Protein Information**

**Name** SLC6A11

**Synonyms** GABT3, GAT3

**Function**

Mediates sodium- and chloride-dependent transport of gamma- aminobutyric acid (GABA) (PubMed:<a href="http://www.uniprot.org/citations/7874447" target="\_blank">7874447</a>). Can also mediate transport of beta-alanine and to a lower extent that of taurine and hypotaurine (By similarity).

**Cellular Location**

Cell membrane {ECO:0000250|UniProtKB:P31647}; Multi-pass membrane protein

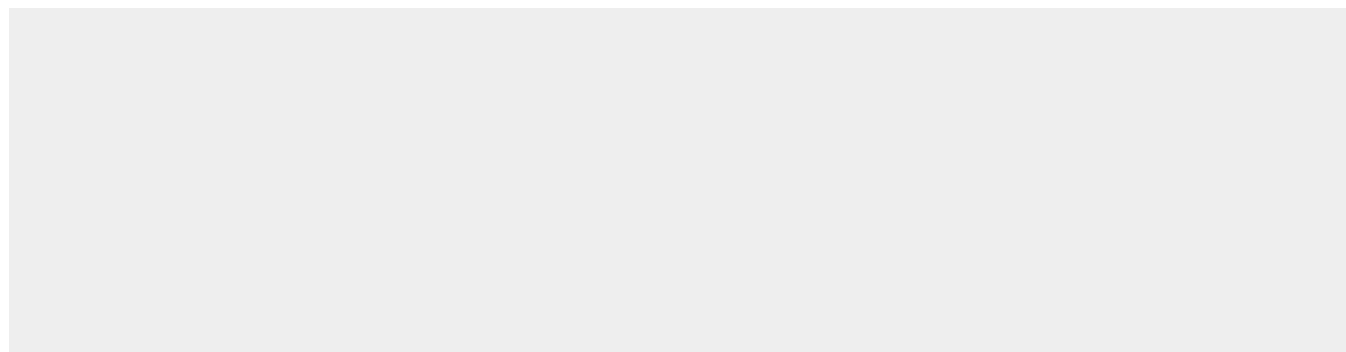
**Tissue Location**

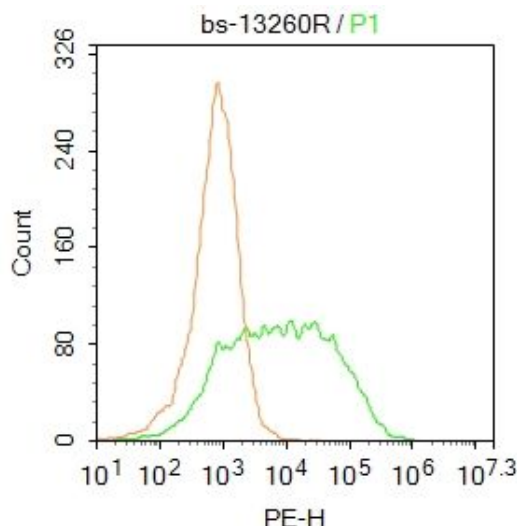
Widespread distribution in the brain.

**GABA Transporter 3 Polyclonal Antibody - Protocols**

Provided below are standard protocols that you may find useful for product applications.

- [Western Blot](#)
- [Blocking Peptides](#)
- [Dot Blot](#)
- [Immunohistochemistry](#)
- [Immunofluorescence](#)
- [Immunoprecipitation](#)
- [Flow Cytometry](#)
- [Cell Culture](#)

**GABA Transporter 3 Polyclonal Antibody - Images**



Blank control: HepG2.

Primary Antibody (green line): Rabbit Anti-GABA Transporter 3 antibody (bs-13260R)

Dilution: 1  $\mu$ g /10<sup>6</sup> cells;

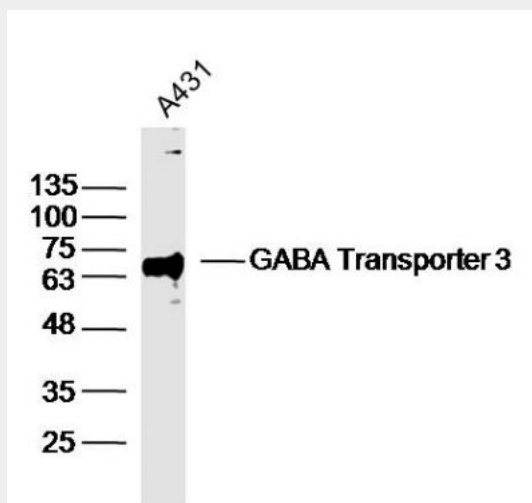
Isotype Control Antibody (orange line): Rabbit IgG .

Secondary Antibody : Goat anti-rabbit IgG-PE

Dilution: 1  $\mu$ g /test.

Protocol

The cells then incubated in 5%BSA to block non-specific protein-protein interactions for 30 min at room temperature .Cells stained with Primary Antibody for 30 min at room temperature. The secondary antibody used for 40 min at room temperature. Acquisition of 20,000 events was performed.



Sample:A431 (human)cell Lysate at 40 ug

Primary: Anti-GABA Transporter 3 (bs-13260R)at 1/300 dilution

Secondary: IRDye800CW Goat Anti-RabbitIgG at 1/20000 dilution

Predicted band size: 71 kD

Observed band size: 71 kD