

GCC1 Polyclonal Antibody
Purified Rabbit Polyclonal Antibody (Pab)
Catalog # AP55129**Specification**

GCC1 Polyclonal Antibody - Product Information

Application	IHC-P, WB
Primary Accession	O96CN9
Reactivity	Rat, Pig, Dog, Bovine
Host	Rabbit
Clonality	Polyclonal
Calculated MW	87811

GCC1 Polyclonal Antibody - Additional Information**Gene ID** 79571**Other Names**

GRIP and coiled-coil domain-containing protein 1, Golgi coiled-coil protein 1, GCC1

Format

0.01M TBS(pH7.4), 0.09% (W/V) sodium azide and 50% Glyce

Storage

Store at -20 °C for one year. Avoid repeated freeze/thaw cycles. When reconstituted in sterile pH 7.4 0.01M PBS or diluent of antibody the antibody is stable for at least two weeks at 2-4 °C.

GCC1 Polyclonal Antibody - Protein Information**Name** GCC1**Function**

Probably involved in maintaining Golgi structure.

Cellular Location

Cytoplasm. Golgi apparatus membrane; Peripheral membrane protein

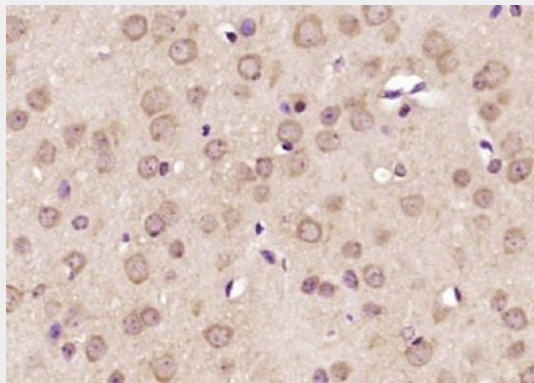
GCC1 Polyclonal Antibody - Protocols

Provided below are standard protocols that you may find useful for product applications.

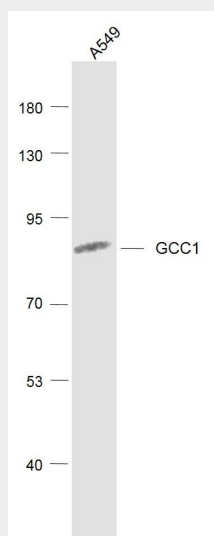
- [Western Blot](#)
- [Blocking Peptides](#)
- [Dot Blot](#)
- [Immunohistochemistry](#)
- [Immunofluorescence](#)

- [Immunoprecipitation](#)
- [Flow Cytometry](#)
- [Cell Culture](#)

GCC1 Polyclonal Antibody - Images



Paraformaldehyde-fixed, paraffin embedded (mouse brain); Antigen retrieval by boiling in sodium citrate buffer (pH6.0) for 15min; Block endogenous peroxidase by 3% hydrogen peroxide for 20 minutes; Blocking buffer (normal goat serum) at 37°C for 30min; Antibody incubation with (GCC1) Polyclonal Antibody, Unconjugated (bs-13310R) at 1:200 overnight at 4°C, followed by operating according to SP Kit(Rabbit) (sp-0023) instructions and DAB staining.



Sample:

A549(Human) Cell Lysate at 30 ug

Primary: Anti-GCC1 (bs-13310R) at 1/1000 dilution

Secondary: IRDye800CW Goat Anti-Rabbit IgG at 1/20000 dilution

Predicted band size: 88 kD

Observed band size: 88 kD