

Gemin 6 Polyclonal Antibody
Purified Rabbit Polyclonal Antibody (Pab)
Catalog # AP55138**Specification****Gemin 6 Polyclonal Antibody - Product Information**

Application	WB, IHC-P, IHC-F, IF, ICC, E
Primary Accession	Q8WXD5
Reactivity	Rat
Host	Rabbit
Clonality	Polyclonal
Calculated MW	18824

Gemin 6 Polyclonal Antibody - Additional Information**Gene ID** 79833**Other Names**

Gem-associated protein 6, Gemin-6, SIP2, GEMIN6

Dilution

WB~~1:1000<br \>IHC-P~~N/A<br \>IHC-F~~N/A<br \>IF~~1:50~200<br \>ICC~~N/A<br \>E~~N/A

Format

0.01M TBS(pH7.4), 0.09% (W/V) sodium azide and 50% Glyce

Storage

Store at -20 °C for one year. Avoid repeated freeze/thaw cycles. When reconstituted in sterile pH 7.4 0.01M PBS or diluent of antibody the antibody is stable for at least two weeks at 2-4 °C.

Gemin 6 Polyclonal Antibody - Protein Information**Name** GEMIN6**Function**

The SMN complex catalyzes the assembly of small nuclear ribonucleoproteins (snRNPs), the building blocks of the spliceosome, and thereby plays an important role in the splicing of cellular pre- mRNAs. Most spliceosomal snRNPs contain a common set of Sm proteins SNRNPB, SNRPD1, SNRPD2, SNRPD3, SNRPE, SNRPF and SNRPG that assemble in a heptameric protein ring on the Sm site of the small nuclear RNA to form the core snRNP (Sm core). In the cytosol, the Sm proteins SNRPD1, SNRPD2, SNRPE, SNRPF and SNRPG are trapped in an inactive 6S pICln-Sm complex by the chaperone CLNS1A that controls the assembly of the core snRNP. To assemble core snRNPs, the SMN complex accepts the trapped 5Sm proteins from CLNS1A forming an intermediate. Binding of snRNA inside 5Sm triggers eviction of the SMN complex, thereby allowing binding of

SNRPD3 and SNRPB to complete assembly of the core snRNP.

Cellular Location

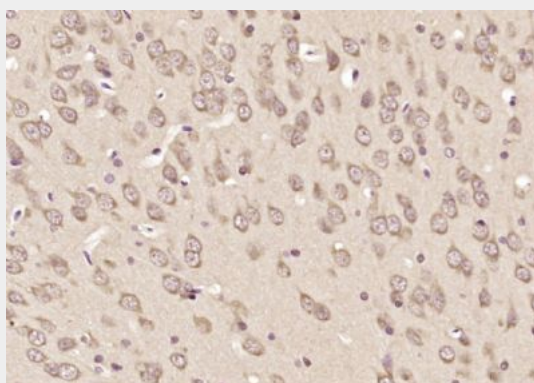
Nucleus, nucleoplasm. Nucleus, gem. Cytoplasm Note=Found both in the nucleoplasm and in nuclear bodies called gems (Gemini of Cajal bodies) that are often in proximity to Cajal (coiled) bodies. Also found in the cytoplasm

Gemin 6 Polyclonal Antibody - Protocols

Provided below are standard protocols that you may find useful for product applications.

- [Western Blot](#)
- [Blocking Peptides](#)
- [Dot Blot](#)
- [Immunohistochemistry](#)
- [Immunofluorescence](#)
- [Immunoprecipitation](#)
- [Flow Cytometry](#)
- [Cell Culture](#)

Gemin 6 Polyclonal Antibody - Images



Paraformaldehyde-fixed, paraffin embedded (rat brain); Antigen retrieval by boiling in sodium citrate buffer (pH6.0) for 15min; Block endogenous peroxidase by 3% hydrogen peroxide for 20 minutes; Blocking buffer (normal goat serum) at 37°C for 30min; Antibody incubation with (Gemin 6) Polyclonal Antibody, Unconjugated (bs-13333R) at 1:200 overnight at 4°C, followed by operating according to SP Kit(Rabbit) (sp-0023) instructions and DAB staining.