

**GIYD2 Polyclonal Antibody**  
**Purified Rabbit Polyclonal Antibody (Pab)**  
**Catalog # AP55145****Specification**

---

**GIYD2 Polyclonal Antibody - Product Information**

Application	WB, IHC-P, IHC-F, IF, ICC, E
Primary Accession	<a href="#">O9BQ83</a>
Reactivity	Rat, Dog, Bovine
Host	Rabbit
Clonality	Polyclonal
Calculated MW	30771

**GIYD2 Polyclonal Antibody - Additional Information****Gene ID** 548593;79008**Other Names**

Structure-specific endonuclease subunit SLX1 {ECO:0000255|HAMAP-Rule:MF\_03100}, 3.1.-.-  
{ECO:0000255|HAMAP-Rule:MF\_03100}, GIY-YIG domain-containing protein 1  
{ECO:0000255|HAMAP-Rule:MF\_03100}, SLX1A {ECO:0000255|HAMAP-Rule:MF\_03100}

**Dilution**

<span class="dilution\_WB">WB~~1:1000</span><br \><span class="dilution\_IHC-P">IHC-P~~N/A</span><br \><span class="dilution\_IHC-F">IHC-F~~N/A</span><br \><span class="dilution\_IF">IF~~1:50~200</span><br \><span class="dilution\_ICC">ICC~~N/A</span><br \><span class="dilution\_E">E~~N/A</span>

**Format**

0.01M TBS(pH7.4), 0.09% (W/V) sodium azide and 50% Glyce

**Storage**

Store at -20 °C for one year. Avoid repeated freeze/thaw cycles. When reconstituted in sterile pH 7.4 0.01M PBS or diluent of antibody the antibody is stable for at least two weeks at 2-4 °C.

**GIYD2 Polyclonal Antibody - Protein Information****Name** SLX1A {ECO:0000255|HAMAP-Rule:MF\_03100}**Function**

Catalytic subunit of the SLX1-SLX4 structure-specific endonuclease that resolves DNA secondary structures generated during DNA repair and recombination. Has endonuclease activity towards branched DNA substrates, introducing single-strand cuts in duplex DNA close to junctions with ss-DNA. Has a preference for 5'-flap structures, and promotes symmetrical cleavage of static and migrating Holliday junctions (HJs). Resolves HJs by generating two pairs of ligatable, nicked duplex products.

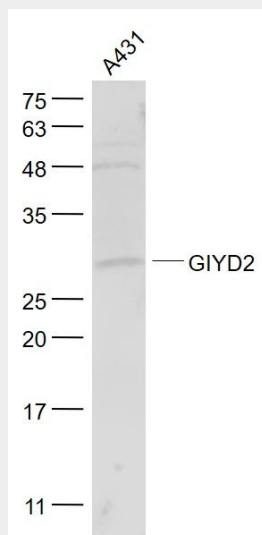
**Cellular Location**

Nucleus {ECO:0000255|HAMAP-Rule:MF\_03100, ECO:0000269|PubMed:19596236}

**GIYD2 Polyclonal Antibody - Protocols**

Provided below are standard protocols that you may find useful for product applications.

- [Western Blot](#)
- [Blocking Peptides](#)
- [Dot Blot](#)
- [Immunohistochemistry](#)
- [Immunofluorescence](#)
- [Immunoprecipitation](#)
- [Flow Cytometry](#)
- [Cell Culture](#)

**GIYD2 Polyclonal Antibody - Images****Sample:**

A431(Human) Cell Lysate at 30 ug

Primary: Anti- GIYD2 (bs-13361R) at 1/1000 dilution

Secondary: IRDye800CW Goat Anti-Rabbit IgG at 1/20000 dilution

Predicted band size: 31 kD

Observed band size: 31 kD