

GLE1 Polyclonal Antibody
Purified Rabbit Polyclonal Antibody (Pab)
Catalog # AP55147**Specification**

GLE1 Polyclonal Antibody - Product Information

Application	IHC-P
Primary Accession	Q53GS7
Reactivity	Rat, Pig, Dog, Bovine
Host	Rabbit
Clonality	Polyclonal
Calculated MW	79836

GLE1 Polyclonal Antibody - Additional Information**Gene ID** 2733**Other Names**

Nucleoporin GLE1, hGLE1, GLE1-like protein, GLE1, GLE1L

Format

0.01M TBS(pH7.4), 0.09% (W/V) sodium azide and 50% Glyce

Storage

Store at -20 °C for one year. Avoid repeated freeze/thaw cycles. When reconstituted in sterile pH 7.4 0.01M PBS or diluent of antibody the antibody is stable for at least two weeks at 2-4 °C.

GLE1 Polyclonal Antibody - Protein Information**Name** GLE1**Synonyms** GLE1L**Function**

Required for the export of mRNAs containing poly(A) tails from the nucleus into the cytoplasm. May be involved in the terminal step of the mRNA transport through the nuclear pore complex (NPC).

Cellular Location

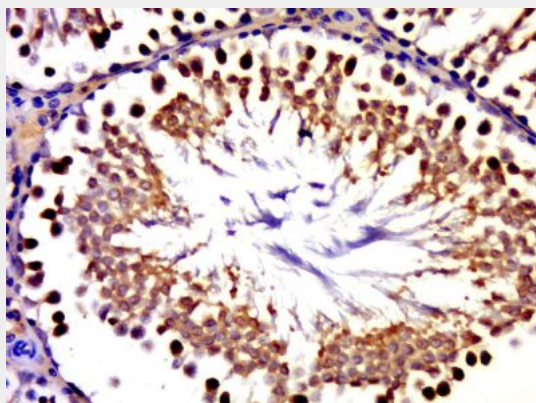
Nucleus. Cytoplasm. Note=Shuttles between the nucleus and the cytoplasm (PubMed:12668658). Shuttling is essential for its mRNA export function (PubMed:12668658).

GLE1 Polyclonal Antibody - Protocols

Provided below are standard protocols that you may find useful for product applications.

- [Western Blot](#)
- [Blocking Peptides](#)
- [Dot Blot](#)
- [Immunohistochemistry](#)
- [Immunofluorescence](#)
- [Immunoprecipitation](#)
- [Flow Cytometry](#)
- [Cell Culture](#)

GLE1 Polyclonal Antibody - Images



Paraformaldehyde-fixed, paraffin embedded (rat testis); Antigen retrieval by boiling in sodium citrate buffer (pH6.0) for 15min; Block endogenous peroxidase by 3% hydrogen peroxide for 20 minutes; Blocking buffer (normal goat serum) at 37°C for 30min; Antibody incubation with (GLE1) Polyclonal Antibody, Unconjugated (bs-13371R) at 1:5000 overnight at 4°C, followed by a conjugated secondary (sp-0023) for 20 minutes and DAB staining.