

GLT25D1 Polyclonal Antibody
Purified Rabbit Polyclonal Antibody (Pab)
Catalog # AP55152**Specification****GLT25D1 Polyclonal Antibody - Product Information**

Application	WB, E
Primary Accession	Q8NBJ5
Reactivity	Rat, Pig, Dog, Bovine
Host	Rabbit
Clonality	Polyclonal
Calculated MW	71636

GLT25D1 Polyclonal Antibody - Additional Information**Gene ID** 79709**Other Names**

Procollagen galactosyltransferase 1, 2.4.1.50, Collagen beta(1-O)galactosyltransferase 1, ColGalT 1, Glycosyltransferase 25 family member 1, Hydroxylysine galactosyltransferase 1, COLGALT1, GLT25D1

Dilution

WB~1:1000<br \>E~N/A

Format

0.01M TBS(pH7.4), 0.09% (W/V) sodium azide and 50% Glyce

Storage

Store at -20 °C for one year. Avoid repeated freeze/thaw cycles. When reconstituted in sterile pH 7.4 0.01M PBS or diluent of antibody the antibody is stable for at least two weeks at 2-4 °C.

GLT25D1 Polyclonal Antibody - Protein Information**Name** COLGALT1**Synonyms** GLT25D1**Function**

Beta-galactosyltransferase that transfers beta-galactose to hydroxylysine residues of type I collagen (PubMed:19075007, PubMed:22216269, PubMed:27402836). By acting on collagen glycosylation, facilitates the formation of collagen triple helix (PubMed:27402836). Also involved in the biosynthesis of collagen type IV (PubMed:30412317).

Cellular Location

Endoplasmic reticulum lumen {ECO:0000255|PROSITE- ProRule:PRU10138, ECO:0000269|PubMed:20470363}. Note=Colocalized with PLOD3 and mannose binding lectin/MBL2.

Tissue Location

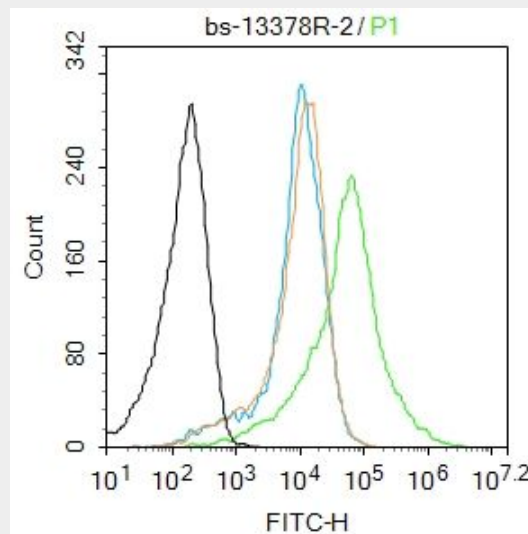
Ubiquitous with higher levels in placenta, heart, lung and spleen.

GLT25D1 Polyclonal Antibody - Protocols

Provided below are standard protocols that you may find useful for product applications.

- [Western Blot](#)
- [Blocking Peptides](#)
- [Dot Blot](#)
- [Immunohistochemistry](#)
- [Immunofluorescence](#)
- [Immunoprecipitation](#)
- [Flow Cytometry](#)
- [Cell Culture](#)

GLT25D1 Polyclonal Antibody - Images



Blank control: Mouse spleen.

Primary Antibody (green line): Rabbit Anti-GLT25D1 antibody (bs-13378R)

Dilution: 2 µg /10⁶ cells;

Isotype Control Antibody (orange line): Rabbit IgG .

Secondary Antibody : Goat anti-rabbit IgG-AF488

Dilution: 1 µg /test.

Protocol

The cells were fixed with 70% ethanol (10min at room temperature) and then were incubated in 5%BSA to block non-specific protein-protein interactions for 30 min at room temperature .Cells stained with Primary Antibody for 30 min at room temperature. The secondary antibody used for 40 min at room temperature. Acquisition of 20,000 events was performed.