

GOLT1A Polyclonal Antibody
Purified Rabbit Polyclonal Antibody (Pab)
Catalog # AP55180**Specification****GOLT1A Polyclonal Antibody - Product Information**

Application	IHC-P, IHC-F, IF, ICC, E
Primary Accession	Q6ZVE7
Reactivity	Rat, Pig, Dog
Host	Rabbit
Clonality	Polyclonal
Calculated MW	15 KDa
Physical State	Liquid
Immunogen	KLH conjugated synthetic peptide derived from human GOLT1A
Epitope Specificity	21-120/132
Purity	
affinity purified by Protein A	
Buffer	0.01M TBS (pH7.4) with 1% BSA, 0.02% Proclin300 and 50% Glycerol.
SUBCELLULAR LOCATION	Golgi apparatus membrane.Multi-pass membrane protein (By similarity).
SIMILARITY	Belongs to the GOT1 family.
Important Note	This product as supplied is intended for research use only, not for use in human, therapeutic or diagnostic applications.

Background Descriptions

May be involved in fusion of ER-derived transport vesicles with the Golgi complex.

GOLT1A Polyclonal Antibody - Additional Information

Gene ID 127845

Other Names

Vesicle transport protein GOT1A, Golgi transport 1 homolog A, hGOT1b, GOLT1A (http://www.genenames.org/cgi-bin/gene_symbol_report?hgnc_id=24766), GOT1B

Dilution

IHC-P~~N/A
IHC-F~~N/A
IF~~1:50~200
ICC~~N/A
E~~N/A

Format

0.01M TBS(pH7.4), 0.09% (W/V) sodium azide and 50% Glyce

Storage

Store at -20 °C for one year. Avoid repeated freeze/thaw cycles. When reconstituted in sterile pH 7.4 0.01M PBS or diluent of antibody the antibody is stable for at least two weeks at 2-4 °C.

GOLT1A Polyclonal Antibody - Protein Information

Name GOLT1A ([HGNC:24766](#))

Synonyms GOT1B

Function

May be involved in fusion of ER-derived transport vesicles with the Golgi complex.

Cellular Location

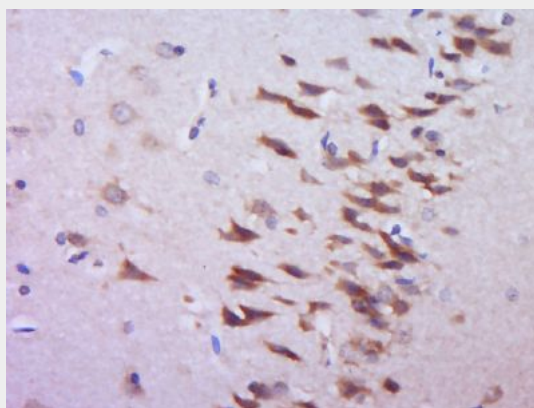
Golgi apparatus membrane; Multi-pass membrane protein

GOLT1A Polyclonal Antibody - Protocols

Provided below are standard protocols that you may find useful for product applications.

- [Western Blot](#)
- [Blocking Peptides](#)
- [Dot Blot](#)
- [Immunohistochemistry](#)
- [Immunofluorescence](#)
- [Immunoprecipitation](#)
- [Flow Cytometry](#)
- [Cell Culture](#)

GOLT1A Polyclonal Antibody - Images



Paraformaldehyde-fixed, paraffin embedded (Rat brain); Antigen retrieval by boiling in sodium citrate buffer (pH6.0) for 15min; Block endogenous peroxidase by 3% hydrogen peroxide for 20 minutes; Blocking buffer (normal goat serum) at 37°C for 30min; Antibody incubation with (GOLT1A) Polyclonal Antibody, Unconjugated (bs-13491R) at 1:400 overnight at 4°C, followed by operating according to SP Kit(Rabbit) (sp-0023) instructions and DAB staining.