

GPATCH3 Polyclonal Antibody
Purified Rabbit Polyclonal Antibody (Pab)
Catalog # AP55185**Specification****GPATCH3 Polyclonal Antibody - Product Information**

Application	IHC-P, IHC-F, IF, ICC, E
Primary Accession	Q96I76
Reactivity	Rat, Pig, Bovine
Host	Rabbit
Clonality	Polyclonal
Calculated MW	59338

GPATCH3 Polyclonal Antibody - Additional Information**Gene ID** 63906**Other Names**

G patch domain-containing protein 3, GPATCH3, GPATC3

Dilution

IHC-P ~ ~ N/A
IHC-F ~ ~ N/A
IF ~ ~ 1:50 ~ 200
ICC ~ ~ N/A
E ~ ~ N/A

Format

0.01M TBS(pH7.4), 0.09% (W/V) sodium azide and 50% Glyce

Storage

Store at -20 °C for one year. Avoid repeated freeze/thaw cycles. When reconstituted in sterile pH 7.4 0.01M PBS or diluent of antibody the antibody is stable for at least two weeks at 2-4 °C.

GPATCH3 Polyclonal Antibody - Protein Information**Name** GPATCH3**Synonyms** GPATC3**Function**

Involved in transcriptional regulation. It is able to activate transcription from the CXCR4 promoter and therefore it might control neural crest cell migration involved in ocular and craniofacial development (PubMed: [28397860](http://www.uniprot.org/citations/28397860)). Is a negative regulator of immune antiviral response, acting via down-regulation of RIG-I-like receptors signaling and inhibition of type I interferon production. The control mechanism involves interaction with mitochondrial MAVS and inhibition of MAVS assembly with downstream proteins implicated in antiviral response, such as TBK1 and TRAF6 (PubMed: [28414768](http://www.uniprot.org/citations/28414768)).

Cellular Location

Nucleus. Cytoplasm

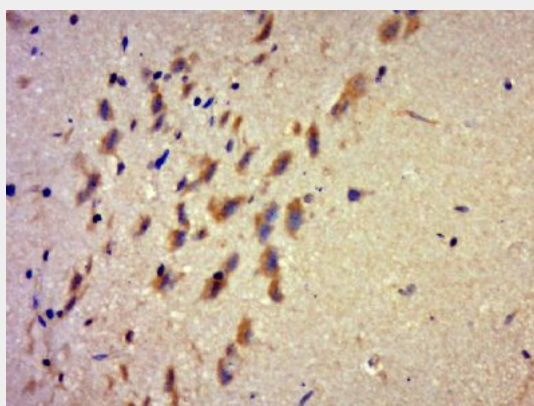
Tissue Location

Expressed in ocular tissues including retinal pigment epithelium, cornea, ciliary muscle and non-pigmented ciliary epithelium. Also expressed in optic nerve, cartilage, skin and lymph node.

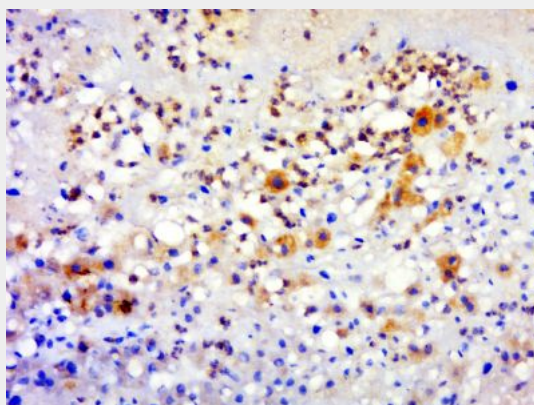
GPATCH3 Polyclonal Antibody - Protocols

Provided below are standard protocols that you may find useful for product applications.

- [Western Blot](#)
- [Blocking Peptides](#)
- [Dot Blot](#)
- [Immunohistochemistry](#)
- [Immunofluorescence](#)
- [Immunoprecipitation](#)
- [Flow Cytometry](#)
- [Cell Culture](#)

GPATCH3 Polyclonal Antibody - Images

Paraformaldehyde-fixed, paraffin embedded (rat brain); Antigen retrieval by boiling in sodium citrate buffer (pH6.0) for 15min; Block endogenous peroxidase by 3% hydrogen peroxide for 20 minutes; Blocking buffer (normal goat serum) at 37°C for 30min; Antibody incubation with (GPATCH3) Polyclonal Antibody, Unconjugated (bs-13500R) at 1:500 overnight at 4°C, followed by a conjugated secondary (sp-0023) for 20 minutes and DAB staining.



Paraformaldehyde-fixed, paraffin embedded (Human hepatocellular carcinoma); Antigen retrieval by boiling in sodium citrate buffer (pH6.0) for 15min; Block endogenous peroxidase by 3% hydrogen peroxide for 20 minutes; Blocking buffer (normal goat serum) at 37°C for 30min; Antibody incubation with (GPATCH3) Polyclonal Antibody, Unconjugated (bs-13500R) at 1:500 overnight at 4°C, followed by a conjugated secondary (sp-0023) for 20 minutes and DAB staining.