

GPR21 Polyclonal Antibody

Purified Rabbit Polyclonal Antibody (Pab)

Catalog # AP55189

Specification

GPR21 Polyclonal Antibody - Product Information

Application	WB, IHC-P, IHC-F, IF, ICC, E
Primary Accession	Q99679
Reactivity	Pig, Bovine
Host	Rabbit
Clonality	Polyclonal
Calculated MW	38 KDa
Physical State	Liquid
Immunogen	KLH conjugated synthetic peptide derived from human G protein coupled receptor 21 1-100/349
Epitope Specificity	IgG
Isotype	
Purity	
affinity purified by Protein A	
Buffer	0.01M TBS (pH7.4) with 1% BSA, 0.02% Proclin300 and 50% Glycerol.
SUBCELLULAR LOCATION	Cell membrane: Multi-pass membrane protein.
Important Note	This product as supplied is intended for research use only, not for use in human, therapeutic or diagnostic applications.

Background Descriptions

G protein-coupled receptors (GPRs), also known as seven transmembrane receptors, heptahelical receptors or 7TM receptors, comprise a superfamily of proteins that play a role in many different stimulus-response pathways. G protein coupled receptors translate extracellular signals into intracellular signals (G protein activation) and they respond to a variety of signaling molecules, such as hormones and neurotransmitters. GPR21 is a 349 amino acid multi-pass membrane protein that functions as an orphan receptor and belongs to the GPR1 family. The gene encoding GPR21 maps to human chromosome 9, which houses over 900 genes and comprises nearly 4% of the human genome. Hereditary hemorrhagic telangiectasia, which is characterized by harmful vascular defects, and Familial dysautonomia, are both associated with chromosome 9.

GPR21 Polyclonal Antibody - Additional Information

Gene ID 2844

Other Names

Probable G-protein coupled receptor 21, GPR21

Dilution

WB~~1:1000<br \>IHC-P~~N/A<br \>IHC-F~~N/A<br \><span class

=IF~~1:50~200<br \>ICC~~N/A<br \>E~~N/A

Storage

Store at -20 °C for one year. Avoid repeated freeze/thaw cycles. When reconstituted in sterile pH 7.4 0.01M PBS or diluent of antibody the antibody is stable for at least two weeks at 2-4 °C.

GPR21 Polyclonal Antibody - Protein Information

Name GPR21

Function

Orphan receptor.

Cellular Location

Cell membrane; Multi-pass membrane protein.

Tissue Location

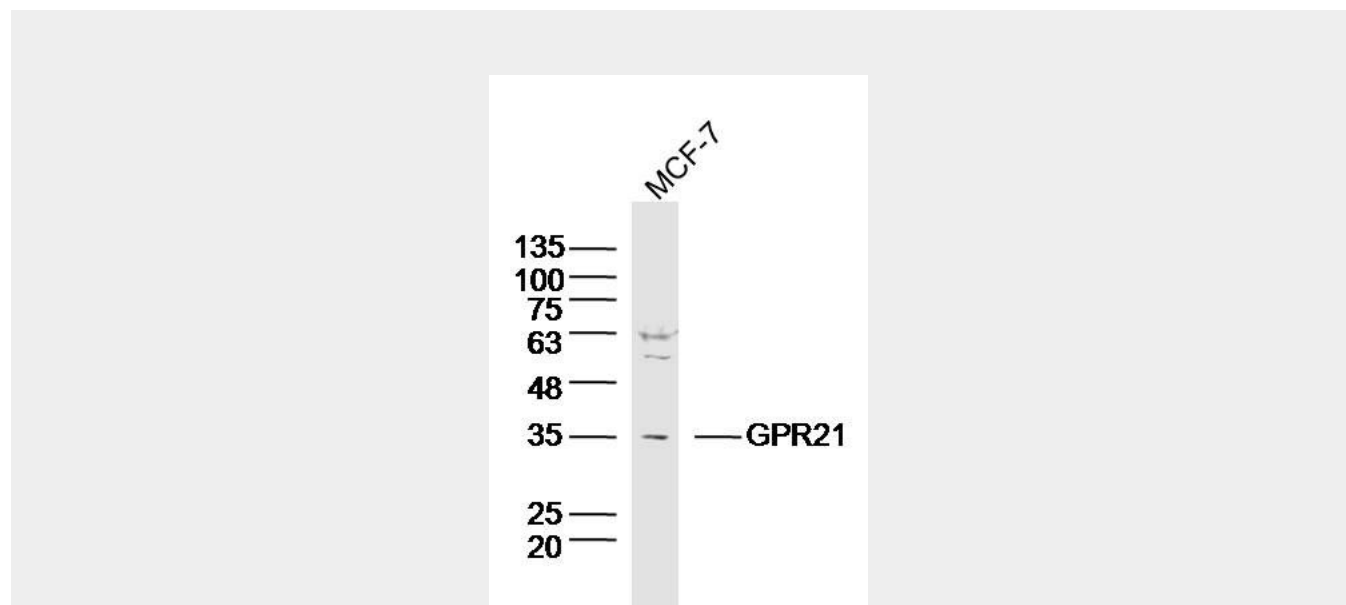
Not detected in the brain regions thalamus, putamen, caudate, frontal cortex, pons, hypothalamus, hippocampus

GPR21 Polyclonal Antibody - Protocols

Provided below are standard protocols that you may find useful for product applications.

- [Western Blot](#)
- [Blocking Peptides](#)
- [Dot Blot](#)
- [Immunohistochemistry](#)
- [Immunofluorescence](#)
- [Immunoprecipitation](#)
- [Flow Cytometry](#)
- [Cell Culture](#)

GPR21 Polyclonal Antibody - Images



Sample: MCF-7 (Human) cell Lysate at 40 ug
Primary: Anti-GPR21(bs-13524R) at 1/300 dilution
Secondary: IRDye800CW Goat Anti-Rabbit IgG at 1/20000 dilution
Predicted band size: 38kD
Observed band size: 35kD