

**ZBTB39 Polyclonal Antibody**  
**Purified Rabbit Polyclonal Antibody (Pab)**  
**Catalog # AP55207****Specification****ZBTB39 Polyclonal Antibody - Product Information**

Application	WB, IHC-P, IHC-F, IF, ICC, E
Primary Accession	<a href="#">O15060</a>
Reactivity	Rat, Dog, Bovine
Host	Rabbit
Clonality	Polyclonal
Calculated MW	79 KDa
Physical State	Liquid
Immunogen	KLH conjugated synthetic peptide derived from human ZBTB39
Epitope Specificity	1-100/712
Isotype	IgG
<b>Purity</b>	
affinity purified by Protein A	
Buffer	0.01M TBS (pH7.4) with 1% BSA, 0.02% Proclin300 and 50% Glycerol.
SUBCELLULAR LOCATION	Nuclear
SIMILARITY	Belongs to the krueppel C2H2-type zinc-finger protein family. Contains 1 BTB (POZ) domain. Contains 8 C2H2-type zinc fingers.
Important Note	This product as supplied is intended for research use only, not for use in human, therapeutic or diagnostic applications.

**Background Descriptions**

ZBTB39 may be involved in transcriptional regulation. It belongs to the krueppel C2H2-type zinc-finger protein family and contains one BTB (POZ) domain and eight C2H2-type zinc fingers.

**ZBTB39 Polyclonal Antibody - Additional Information**

**Gene ID** 9880

**Other Names**

Zinc finger and BTB domain-containing protein 39, ZBTB39, KIAA0352

**Dilution**

<span class = "dilution\_WB">WB~~1:1000</span><br \><span class = "dilution\_IHC-P">IHC-P~~N/A</span><br \><span class = "dilution\_IHC-F">IHC-F~~N/A</span><br \><span class = "dilution\_IF">IF~~1:50~200</span><br \><span class = "dilution\_ICC">ICC~~N/A</span><br \><span class = "dilution\_E">E~~N/A</span>

**Format**

0.01M TBS(pH7.4), 0.09% (W/V) sodium azide and 50% Glyce

**Storage**

Store at -20 °C for one year. Avoid repeated freeze/thaw cycles. When reconstituted in sterile pH 7.4 0.01M PBS or diluent of antibody the antibody is stable for at least two weeks at 2-4 °C.

**ZBTB39 Polyclonal Antibody - Protein Information**

**Name** ZBTB39

**Synonyms** KIAA0352

**Function**

May be involved in transcriptional regulation.

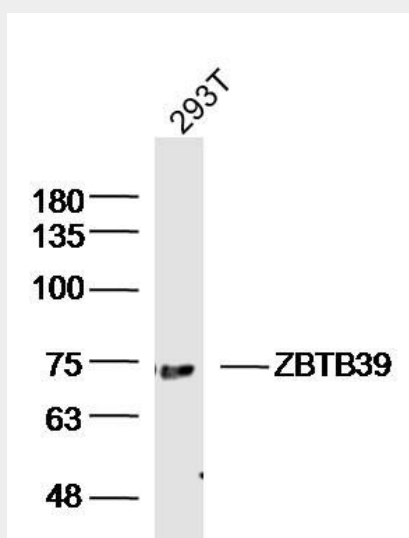
**Cellular Location**

Nucleus.

**ZBTB39 Polyclonal Antibody - Protocols**

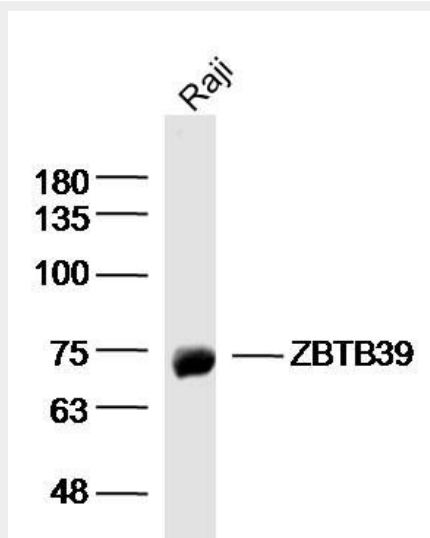
Provided below are standard protocols that you may find useful for product applications.

- [Western Blot](#)
- [Blocking Peptides](#)
- [Dot Blot](#)
- [Immunohistochemistry](#)
- [Immunofluorescence](#)
- [Immunoprecipitation](#)
- [Flow Cytometry](#)
- [Cell Culture](#)

**ZBTB39 Polyclonal Antibody - Images**

Sample: 293T (human) cell Lysate at 40 ug  
Primary: Anti-ZBTB39(bs-13573R) at 1/300 dilution

Secondary: IRDye800CW Goat Anti-RabbitIgG at 1/20000 dilution  
Predicted band size: 79 kD  
Observed band size: 75 kD



Sample: Raji (human)cell Lysate at 40 ug  
Primary: Anti- ZBTB39 (bs-13573R)at 1/300 dilution  
Secondary: IRDye800CW Goat Anti-RabbitIgG at 1/20000 dilution  
Predicted band size: 79 kD  
Observed band size: 75 kD