

ZBTB42 Polyclonal Antibody
Purified Rabbit Polyclonal Antibody (Pab)
Catalog # AP55209**Specification****ZBTB42 Polyclonal Antibody - Product Information**

Application	WB, IHC-P, IHC-F, IF, ICC, E
Primary Accession	B2RXF5
Reactivity	Rat, Pig, Dog, Bovine
Host	Rabbit
Clonality	Polyclonal
Calculated MW	46 KDa
Physical State	Liquid
Immunogen	KLH conjugated synthetic peptide derived from human ZBTB42/ZNF925
Epitope Specificity	341-422/422
Isotype	IgG
Purity	
affinity purified by Protein A	
Buffer	0.01M TBS (pH7.4) with 1% BSA, 0.02% Proclin300 and 50% Glycerol.
SUBCELLULAR LOCATION	Cytoplasm. Nucleus. Localizes mainly in the cytoplasm.
SIMILARITY	Belongs to the krueppel C2H2-type zinc-finger protein family. ZNF238 subfamily. Contains 1 BTB (POZ) domain. Contains 4 C2H2-type zinc fingers.
Important Note	This product as supplied is intended for research use only, not for use in human, therapeutic or diagnostic applications.

Background Descriptions

Transcriptional repressor. Specifically binds DNA and probably acts by recruiting chromatin remodeling multiprotein complexes.

ZBTB42 Polyclonal Antibody - Additional Information

Gene ID 100128927

Other Names

Zinc finger and BTB domain-containing protein 42, ZBTB42

Dilution

WB~~1:1000<br \>IHC-P~~N/A<br \>IHC-F~~N/A<br \>IF~~1:50~200<br \>ICC~~N/A<br \>E~~N/A

Storage

Store at -20 °C for one year. Avoid repeated freeze/thaw cycles. When reconstituted in sterile pH 7.4 0.01M PBS or diluent of antibody the antibody is stable for at least two weeks at 2-4 °C.

ZBTB42 Polyclonal Antibody - Protein Information

Name ZBTB42

Function

Transcriptional repressor. Specifically binds DNA and probably acts by recruiting chromatin remodeling multiprotein complexes.

Cellular Location

Cytoplasm {ECO:0000250|UniProtKB:Q811H0}. Nucleus. Nucleus, nucleoplasm {ECO:0000250|UniProtKB:Q811H0}. Note=In skeletal myofibers, highly enriched in subsynaptic nuclei at the neuromuscular junctions {ECO:0000250|UniProtKB:Q811H0}

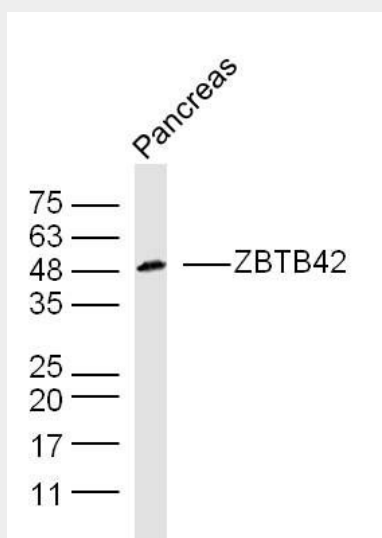
Tissue Location

Expressed in skeletal muscle (at protein level).

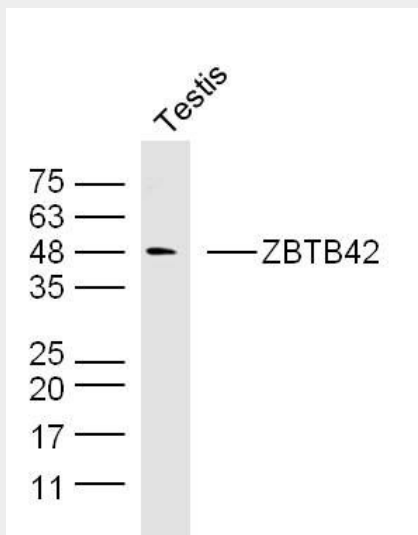
ZBTB42 Polyclonal Antibody - Protocols

Provided below are standard protocols that you may find useful for product applications.

- [Western Blot](#)
- [Blocking Peptides](#)
- [Dot Blot](#)
- [Immunohistochemistry](#)
- [Immunofluorescence](#)
- [Immunoprecipitation](#)
- [Flow Cytometry](#)
- [Cell Culture](#)

ZBTB42 Polyclonal Antibody - Images

Sample: pancreas (Mouse) Lysate at 40 ug
Primary: Anti-ZBTB42(bs-13577R) at 1/300 dilution
Secondary: IRDye800CW Goat Anti-Rabbit IgG at 1/20000 dilution
Predicted band size: 46 kD
Observed band size: 48 kD



Sample: testis (Mouse) Lysate at 40 ug
Primary: Anti-ZBTB42(bs-13577R) at 1/300 dilution
Secondary: IRDye800CW Goat Anti-Rabbit IgG at 1/20000 dilution
Predicted band size: 46 kD
Observed band size: 46 kD