

CED6 Polyclonal Antibody
Purified Rabbit Polyclonal Antibody (Pab)
Catalog # AP55224**Specification**

CED6 Polyclonal Antibody - Product Information

Application	IHC-P
Primary Accession	Q9UBP9
Reactivity	Pig, Bovine
Host	Rabbit
Clonality	Polyclonal
Calculated MW	34490

CED6 Polyclonal Antibody - Additional Information**Gene ID** 51454**Other Names**

PTB domain-containing engulfment adapter protein 1, Cell death protein 6 homolog, PTB domain adapter protein CED-6, Protein GULP, GULP1, CED6, GULP

Format

0.01M TBS(pH7.4), 0.09% (W/V) sodium azide and 50% Glyce

Storage

Store at -20 °C for one year. Avoid repeated freeze/thaw cycles. When reconstituted in sterile pH 7.4 0.01M PBS or diluent of antibody the antibody is stable for at least two weeks at 2-4 °C.

CED6 Polyclonal Antibody - Protein Information**Name** GULP1**Synonyms** CED6, GULP**Function**

May function as an adapter protein. Required for efficient phagocytosis of apoptotic cells. Modulates cellular glycosphingolipid and cholesterol transport. May play a role in the internalization and endosomal trafficking of various LRP1 ligands, such as PSAP. Increases cellular levels of GTP-bound ARF6.

Cellular Location

Cytoplasm. Note=May associate with the cytoplasmic side of the plasma membrane and early endosomes

Tissue Location

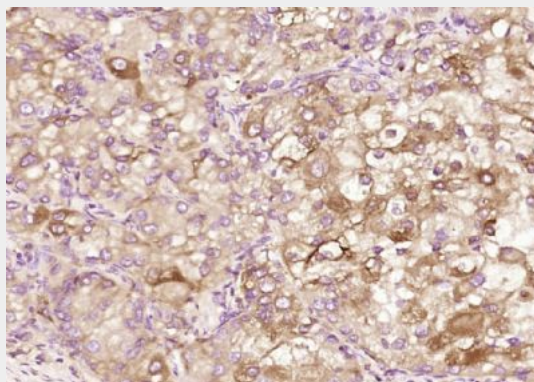
Widely expressed. Detected in macrophages, pancreas, kidney, skeletal muscle, heart, colon, intestine, lung, placenta and ovary.

CED6 Polyclonal Antibody - Protocols

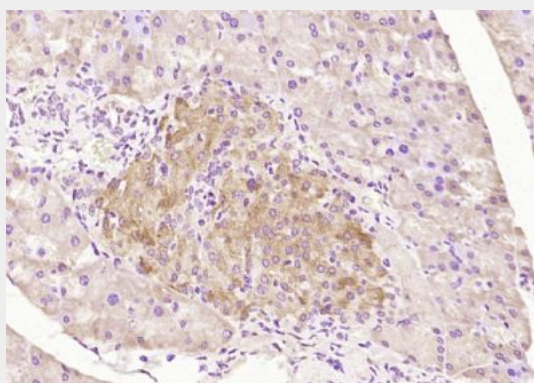
Provided below are standard protocols that you may find useful for product applications.

- [Western Blot](#)
- [Blocking Peptides](#)
- [Dot Blot](#)
- [Immunohistochemistry](#)
- [Immunofluorescence](#)
- [Immunoprecipitation](#)
- [Flow Cytometry](#)
- [Cell Culture](#)

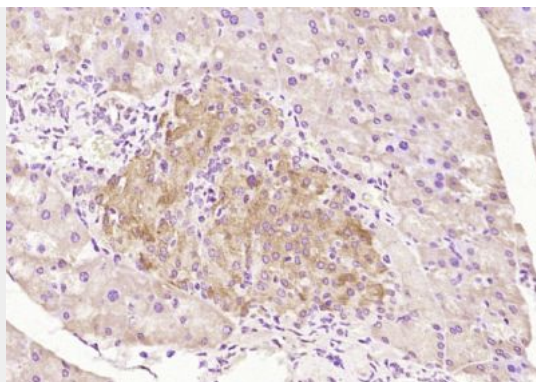
CED6 Polyclonal Antibody - Images



Paraformaldehyde-fixed, paraffin embedded (Human kidney); Antigen retrieval by boiling in sodium citrate buffer (pH6.0) for 15min; Block endogenous peroxidase by 3% hydrogen peroxide for 20 minutes; Blocking buffer (normal goat serum) at 37°C for 30min; Antibody incubation with (CED6) Polyclonal Antibody, Unconjugated (bs-13626R) at 1:200 overnight at 4°C, followed by operating according to SP Kit(Rabbit) (sp-0023) instructions and DAB staining.



Paraformaldehyde-fixed, paraffin embedded (mouse pancreas); Antigen retrieval by boiling in sodium citrate buffer (pH6.0) for 15min; Block endogenous peroxidase by 3% hydrogen peroxide for 20 minutes; Blocking buffer (normal goat serum) at 37°C for 30min; Antibody incubation with (CED6) Polyclonal Antibody, Unconjugated (bs-13626R) at 1:200 overnight at 4°C, followed by operating according to SP Kit(Rabbit) (sp-0023) instructions and DAB staining.



Paraformaldehyde-fixed, paraffin embedded (mouse pancreas); Antigen retrieval by boiling in sodium citrate buffer (pH6.0) for 15min; Block endogenous peroxidase by 3% hydrogen peroxide for 20 minutes; Blocking buffer (normal goat serum) at 37°C for 30min; Antibody incubation with (CED6) Polyclonal Antibody, Unconjugated (bs-13626R) at 1:200 overnight at 4°C, followed by operating according to SP Kit(Rabbit) (sp-0023) instructions and DAB staining.