

AP1M2 Polyclonal Antibody
Purified Rabbit Polyclonal Antibody (Pab)
Catalog # AP55228**Specification**

AP1M2 Polyclonal Antibody - Product Information

Application	IHC-P
Primary Accession	O9Y6Q5
Reactivity	Pig, Bovine
Host	Rabbit
Clonality	Polyclonal
Calculated MW	48108

AP1M2 Polyclonal Antibody - Additional Information**Gene ID** 10053**Other Names**

AP-1 complex subunit mu-2, AP-mu chain family member mu1B, Adaptor protein complex AP-1 subunit mu-2, Adaptor-related protein complex 1 subunit mu-2, Clathrin assembly protein complex 1 mu-2 medium chain 2, Golgi adaptor HA1/AP1 adaptin mu-2 subunit, Mu-adaptin 2, Mu1B-adaptin, AP1M2

Format

0.01M TBS(pH7.4), 0.09% (W/V) sodium azide and 50% Glyce

Storage

Store at -20 °C for one year. Avoid repeated freeze/thaw cycles. When reconstituted in sterile pH 7.4 0.01M PBS or diluent of antibody the antibody is stable for at least two weeks at 2-4 °C.

AP1M2 Polyclonal Antibody - Protein Information**Name** AP1M2**Function**

Subunit of clathrin-associated adaptor protein complex 1 that plays a role in protein sorting in the trans-Golgi network (TGN) and endosomes. The AP complexes mediate the recruitment of clathrin to membranes and the recognition of sorting signals within the cytosolic tails of transmembrane cargo molecules.

Cellular Location

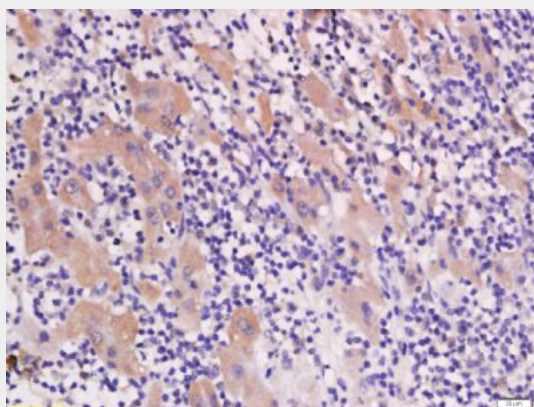
Golgi apparatus. Cytoplasmic vesicle, clathrin- coated vesicle membrane; Peripheral membrane protein; Cytoplasmic side Note=Component of the coat surrounding the cytoplasmic face of coated vesicles located at the Golgi complex

AP1M2 Polyclonal Antibody - Protocols

Provided below are standard protocols that you may find useful for product applications.

- [Western Blot](#)
- [Blocking Peptides](#)
- [Dot Blot](#)
- [Immunohistochemistry](#)
- [Immunofluorescence](#)
- [Immunoprecipitation](#)
- [Flow Cytometry](#)
- [Cell Culture](#)

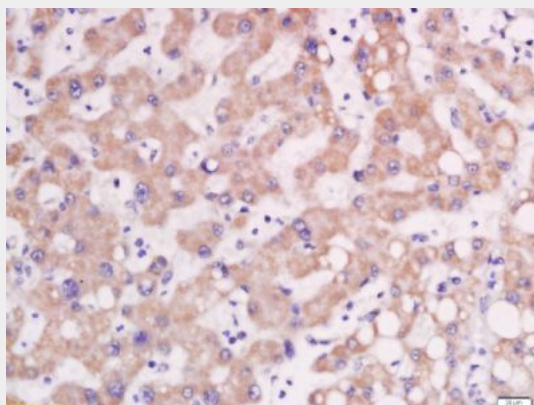
AP1M2 Polyclonal Antibody - Images



Tissue/cell: human liver carcinoma; 4% Paraformaldehyde-fixed and paraffin-embedded;

Antigen retrieval: citrate buffer (0.01M, pH 6.0), Boiling bathing for 15min; Block endogenous peroxidase by 3% Hydrogen peroxide for 30min; Blocking buffer (normal goat serum,C-0005) at 37°C for 20 min;

Incubation: Anti-AP1M2 Polyclonal Antibody, Unconjugated(bs-13638R) 1:200, overnight at 4°C, followed by conjugation to the secondary antibody(SP-0023) and DAB(C-0010) staining



Tissue/cell: human liver carcinoma; 4% Paraformaldehyde-fixed and paraffin-embedded;

Antigen retrieval: citrate buffer (0.01M, pH 6.0), Boiling bathing for 15min; Block endogenous peroxidase by 3% Hydrogen peroxide for 30min; Blocking buffer (normal goat serum,C-0005) at 37°C for 20 min;

Incubation: Anti-AP1M2 Polyclonal Antibody, Unconjugated(bs-13638R) 1:200, overnight at 4°C, followed by conjugation to the secondary antibody(SP-0023) and DAB(C-0010) staining