

**WDR68 Polyclonal Antibody**  
**Purified Rabbit Polyclonal Antibody (Pab)**  
**Catalog # AP55240****Specification**

---

**WDR68 Polyclonal Antibody - Product Information**

Application	WB, IHC-P, IHC-F, IF, ICC, E
Primary Accession	<a href="#">P61962</a>
Reactivity	Rat
Host	Rabbit
Clonality	Polyclonal
Calculated MW	39 KDa
Physical State	Liquid
Immunogen	KLH conjugated synthetic peptide derived from human WDR68
Epitope Specificity	2-100/342
Isotype	IgG
<b>Purity</b>	
affinity purified by Protein A	
Buffer	0.01M TBS (pH7.4) with 1% BSA, 0.02% Proclin300 and 50% Glycerol.
SUBCELLULAR LOCATION	Cytoplasm. Nucleus. Overexpression of DIAHP1 or active RHOA causes translocation from the nucleus to cytoplasm.
SIMILARITY	Belongs to the WD repeat DCAF7 family. Contains 4 WD repeats.
SUBUNIT	Interacts with DYRK1A, DYRK1B and DIAPH1. Interacts with DDB1. Interacts with ZNF703.
Post-translational modifications	Protein modification; protein ubiquitination.
Important Note	This product as supplied is intended for research use only, not for use in human, therapeutic or diagnostic applications.

**Background Descriptions**

Involved in craniofacial development. Acts upstream of the EDN1 pathway and is required for formation of the upper jaw equivalent, the palatoquadrate. The activity required for EDN1 pathway function differs between the first and second arches (By similarity). Associates with DIAPH1 and controls GLI1 transcriptional activity. Could be involved in normal and disease skin development. May function as a substrate receptor for CUL4-DDB1 E3 ubiquitin-protein ligase complex.

**WDR68 Polyclonal Antibody - Additional Information****Gene ID** 10238**Other Names**

DDB1- and CUL4-associated factor 7, WD repeat-containing protein 68, WD repeat-containing

protein An11 homolog, DCAF7, HAN11, WDR68

**Dilution**

<span class = "dilution\_WB">WB~~1:1000</span><br \><span class = "dilution\_IHC-P">IHC-P~~N/A</span><br \><span class = "dilution\_IHC-F">IHC-F~~N/A</span><br \><span class = "dilution\_IF">IF~~1:50~200</span><br \><span class = "dilution\_ICC">ICC~~N/A</span><br \><span class = "dilution\_E">E~~N/A</span>

**Storage**

Store at -20 °C for one year. Avoid repeated freeze/thaw cycles. When reconstituted in sterile pH 7.4 0.01M PBS or diluent of antibody the antibody is stable for at least two weeks at 2-4 °C.

**WDR68 Polyclonal Antibody - Protein Information**

**Name** DCAF7

**Synonyms** HAN11, WDR68

**Function**

Involved in craniofacial development. Acts upstream of the EDN1 pathway and is required for formation of the upper jaw equivalent, the palatoquadrate. The activity required for EDN1 pathway function differs between the first and second arches (By similarity). Associates with DIAPH1 and controls GLI1 transcriptional activity. Could be involved in normal and disease skin development. May function as a substrate receptor for CUL4-DDB1 E3 ubiquitin-protein ligase complex.

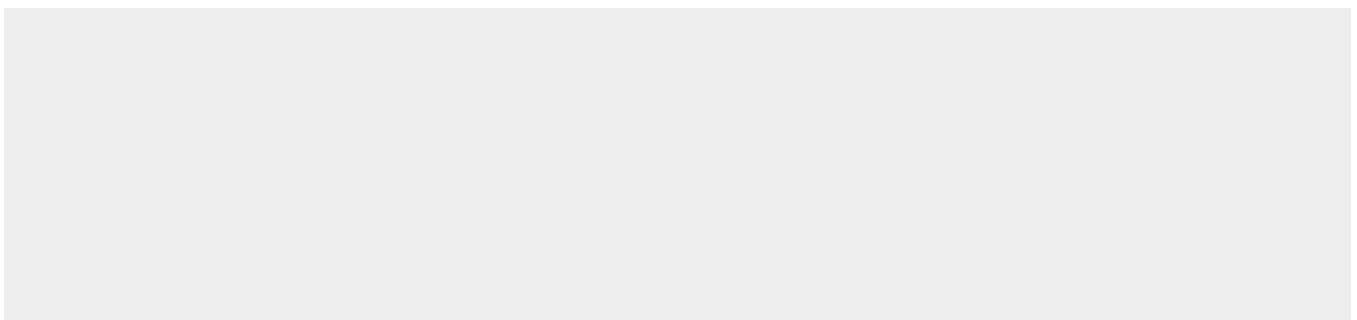
**Cellular Location**

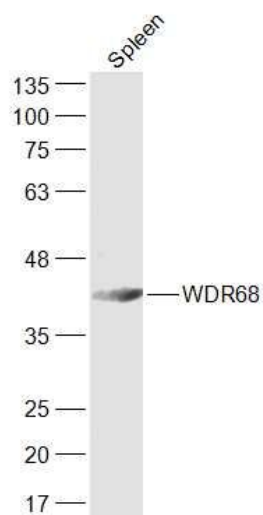
Cytoplasm. Nucleus. Note=Overexpression of DIAHP1 or active RHOA causes translocation from the nucleus to cytoplasm

**WDR68 Polyclonal Antibody - Protocols**

Provided below are standard protocols that you may find useful for product applications.

- [Western Blot](#)
- [Blocking Peptides](#)
- [Dot Blot](#)
- [Immunohistochemistry](#)
- [Immunofluorescence](#)
- [Immunoprecipitation](#)
- [Flow Cytometry](#)
- [Cell Culture](#)

**WDR68 Polyclonal Antibody - Images**



**Sample:**

Spleen (Mouse) Lysate at 40 ug

Primary: Anti-WDR68 (bs-13682R) at 1/300 dilution

Secondary: IRDye800CW Goat Anti-Rabbit IgG at 1/20000 dilution

Predicted band size: 39 kD

Observed band size: 39 kD