

SIT Polyclonal Antibody
Purified Rabbit Polyclonal Antibody (Pab)
Catalog # AP55249**Specification**

SIT Polyclonal Antibody - Product Information

Application	IHC-P
Primary Accession	O9Y3P8
Reactivity	Rat, Pig, Bovine
Host	Rabbit
Clonality	Polyclonal
Calculated MW	21126

SIT Polyclonal Antibody - Additional Information**Gene ID** 27240**Other Names**

Signaling threshold-regulating transmembrane adapter 1, SHP2-interacting transmembrane adapter protein, Suppression-inducing transmembrane adapter 1, gp30/40, SIT1, SIT

Format

0.01M TBS(pH7.4), 0.09% (W/V) sodium azide and 50% Glyce

Storage

Store at -20 °C for one year. Avoid repeated freeze/thaw cycles. When reconstituted in sterile pH 7.4 0.01M PBS or diluent of antibody the antibody is stable for at least two weeks at 2-4 °C.

SIT Polyclonal Antibody - Protein Information**Name** SIT1**Synonyms** SIT**Function**

Negatively regulates TCR (T-cell antigen receptor)-mediated signaling in T-cells. Involved in positive selection of T-cells.

Cellular Location

Cell membrane; Single-pass type I membrane protein

Tissue Location

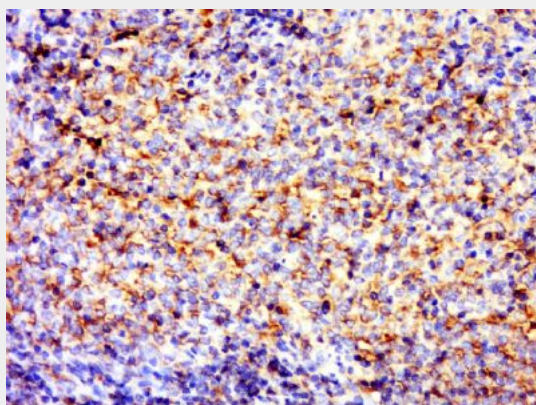
Specifically expressed in T- and B-cells. Present in plasma cells but not in germinal center B-cells (at protein level) Expressed in T- and B-cell lymphoma.

SIT Polyclonal Antibody - Protocols

Provided below are standard protocols that you may find useful for product applications.

- [Western Blot](#)
- [Blocking Peptides](#)
- [Dot Blot](#)
- [Immunohistochemistry](#)
- [Immunofluorescence](#)
- [Immunoprecipitation](#)
- [Flow Cytometry](#)
- [Cell Culture](#)

SIT Polyclonal Antibody - Images



Paraformaldehyde-fixed, paraffin embedded (rat spleen); Antigen retrieval by boiling in sodium citrate buffer (pH6.0) for 15min; Block endogenous peroxidase by 3% hydrogen peroxide for 20 minutes; Blocking buffer (normal goat serum) at 37°C for 30min; Antibody incubation with (SIT) Polyclonal Antibody, Unconjugated (bs-13701R) at 1:400 overnight at 4°C, followed by a conjugated secondary (sp-0023) for 20 minutes and DAB staining.