

**PLEKHA7 Polyclonal Antibody**  
**Purified Rabbit Polyclonal Antibody (Pab)**  
**Catalog # AP55260****Specification**

---

**PLEKHA7 Polyclonal Antibody - Product Information**

Application	WB, IHC-P
Primary Accession	<a href="#">O6IQ23</a>
Host	Rabbit
Clonality	Polyclonal
Calculated MW	127135

**PLEKHA7 Polyclonal Antibody - Additional Information****Gene ID** 144100**Other Names**

Pleckstrin homology domain-containing family A member 7, PH domain-containing family A member 7, PLEKHA7

**Format**

0.01M TBS(pH7.4), 0.09% (W/V) sodium azide and 50% Glyce

**Storage**

Store at -20 °C for one year. Avoid repeated freeze/thaw cycles. When reconstituted in sterile pH 7.4 0.01M PBS or diluent of antibody the antibody is stable for at least two weeks at 2-4 °C.

**PLEKHA7 Polyclonal Antibody - Protein Information****Name** PLEKHA7**Function**

Required for zonula adherens biogenesis and maintenance (PubMed:<a href="http://www.uniprot.org/citations/19041755" target="\_blank">19041755</a>). Acts via its interaction with CAMSAP3, which anchors microtubules at their minus-ends to zonula adherens, leading to the recruitment of KIFC3 kinesin to the junctional site (PubMed:<a href="http://www.uniprot.org/citations/19041755" target="\_blank">19041755</a>). Mediates docking of ADAM10 to zonula adherens through a PDZD11- dependent interaction with the ADAM10-binding protein TSPAN33 (PubMed:<a href="http://www.uniprot.org/citations/30463011" target="\_blank">30463011</a>).

**Cellular Location**

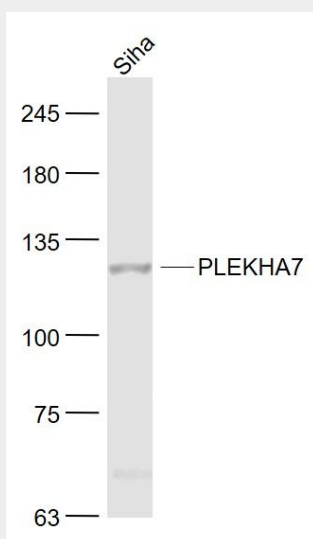
Cell junction, adherens junction. Cytoplasm. Cytoplasm, cytoskeleton, microtubule organizing center, centrosome Note=Localizes to zonula adherens, recruited via its interaction with CTNND1.

**PLEKHA7 Polyclonal Antibody - Protocols**

Provided below are standard protocols that you may find useful for product applications.

- [Western Blot](#)
- [Blocking Peptides](#)
- [Dot Blot](#)
- [Immunohistochemistry](#)
- [Immunofluorescence](#)
- [Immunoprecipitation](#)
- [Flow Cytometry](#)
- [Cell Culture](#)

#### **PLEKHA7 Polyclonal Antibody - Images**



**Sample:**

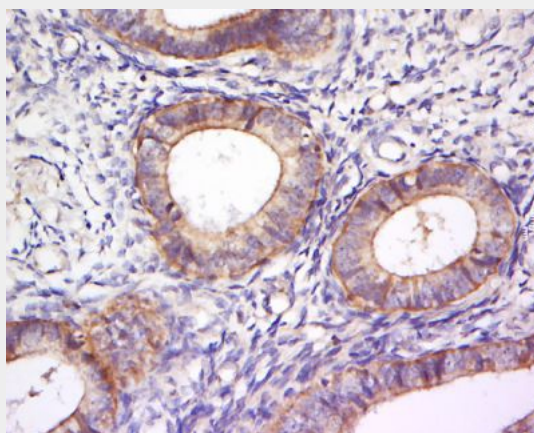
SiHa(Human) Cell Lysate at 30 ug

Primary: Anti- PLEKHA7 (bs-13730R) at 1/1000 dilution

Secondary: IRDye800CW Goat Anti-Rabbit IgG at 1/20000 dilution

Predicted band size: 127 kD

Observed band size: 127 kD



Tissue/cell: human cervical cancer; 4% Paraformaldehyde-fixed and paraffin-embedded;

Antigen retrieval: citrate buffer ( 0.01M, pH 6.0 ), Boiling bathing for 15min; Block endogenous peroxidase by 3% Hydrogen peroxide for 30min; Blocking buffer (normal goat serum,C-0005) at

37°C for 20 min;

Incubation: Anti-PLEKHA7 Polyclonal Antibody, Unconjugated(bs-13730R) 1:500, overnight at 4°C, followed by conjugation to the secondary antibody(SP-0023) and DAB(C-0010) staining