

SHROOM1 Polyclonal Antibody
Purified Rabbit Polyclonal Antibody (Pab)
Catalog # AP55263

Specification

SHROOM1 Polyclonal Antibody - Product Information

Application	IHC-P, IHC-F, IF, ICC, E
Primary Accession	Q2M3G4
Reactivity	Rat, Dog, Bovine
Host	Rabbit
Clonality	Polyclonal
Calculated MW	90 KDa
Physical State	Liquid
Immunogen	KLH conjugated synthetic peptide derived from human SHROOM1
Epitope Specificity	121-220/852
Purity	
affinity purified by Protein A	
Buffer	0.01M TBS (pH7.4) with 1% BSA, 0.02% Proclin300 and 50% Glycerol.
SUBCELLULAR LOCATION	Cytoplasm; cytoskeleton.
SIMILARITY	Belongs to the shroom family. Contains 1 ASD1 domain. Contains 1 ASD2 domain.
Important Note	This product as supplied is intended for research use only, not for use in human, therapeutic or diagnostic applications.

Background Descriptions

SHROOM1 is an 852 amino acid protein that contains one ASD1 domain and one ASD2 domain. Localized to both the cytoplasm and the cytoskeleton, SHROOM1 interacts with Actin and is thought to be involved in microtubule assembly during cell elongation, possibly playing a role in the development of the nervous system. Multiple isoforms of SHROOM1 exist due to alternative splicing events. The gene encoding SHROOM1 maps to human chromosome 5, which contains 181 million base pairs and comprises nearly 6% of the human genome. Deletion of the p arm of chromosome 5 leads to Cri du chat syndrome, while deletion of the q arm or of chromosome 5 altogether is common in therapy-related acute myelogenous leukemias and myelodysplastic syndrome.

SHROOM1 Polyclonal Antibody - Additional Information

Gene ID 134549

Other Names

Protein Shroom1, Apical protein 2, SHROOM1, APXL2, KIAA1960

Dilution

IHC-P~~N/A<br \>IHC-F~~N/A<br \>IF~~1:50~200<br \>ICC~~N/A<br \>

\>E~~N/A

Format

0.01M TBS(pH7.4), 0.09% (W/V) sodium azide and 50% Glyce

Storage

Store at -20 °C for one year. Avoid repeated freeze/thaw cycles. When reconstituted in sterile pH 7.4 0.01M PBS or diluent of antibody the antibody is stable for at least two weeks at 2-4 °C.

SHROOM1 Polyclonal Antibody - Protein Information

Name SHROOM1

Synonyms APXL2, KIAA1960

Function

May be involved in the assembly of microtubule arrays during cell elongation.

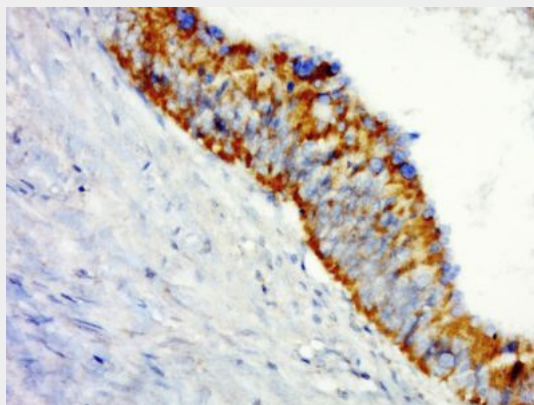
Cellular Location

Cytoplasm, cytoskeleton.

SHROOM1 Polyclonal Antibody - Protocols

Provided below are standard protocols that you may find useful for product applications.

- [Western Blot](#)
- [Blocking Peptides](#)
- [Dot Blot](#)
- [Immunohistochemistry](#)
- [Immunofluorescence](#)
- [Immunoprecipitation](#)
- [Flow Cytometry](#)
- [Cell Culture](#)

SHROOM1 Polyclonal Antibody - Images

Paraformaldehyde-fixed, paraffin embedded (human colon cancer); Antigen retrieval by boiling in sodium citrate buffer (pH6.0) for 15min; Block endogenous peroxidase by 3% hydrogen peroxide for 20 minutes; Blocking buffer (normal goat serum) at 37°C for 30min; Antibody incubation with

(Claudin) Polyclonal Antibody, Unconjugated (bs-13753R) at 1:500 overnight at 4°C, followed by a conjugated secondary (sp-0023) for 20 minutes and DAB staining.