

Smoothelin Polyclonal Antibody
Purified Rabbit Polyclonal Antibody (Pab)
Catalog # AP55264**Specification**

Smoothelin Polyclonal Antibody - Product Information

Application	IHC-P
Primary Accession	P53814
Reactivity	Rat, Pig, Dog, Bovine
Host	Rabbit
Clonality	Polyclonal
Calculated MW	99059

Smoothelin Polyclonal Antibody - Additional Information**Gene ID** 6525**Other Names**

Smoothelin, SMTN, SMSMO

Format

0.01M TBS(pH7.4), 0.09% (W/V) sodium azide and 50% Glyce

Storage

Store at -20 °C for one year. Avoid repeated freeze/thaw cycles. When reconstituted in sterile pH 7.4 0.01M PBS or diluent of antibody the antibody is stable for at least two weeks at 2-4 °C.

Smoothelin Polyclonal Antibody - Protein Information**Name** SMTN**Synonyms** SMSMO**Function**

Structural protein of the cytoskeleton.

Cellular Location

Cytoplasm, cytoskeleton. Note=Exhibits a filamentous organization

Tissue Location

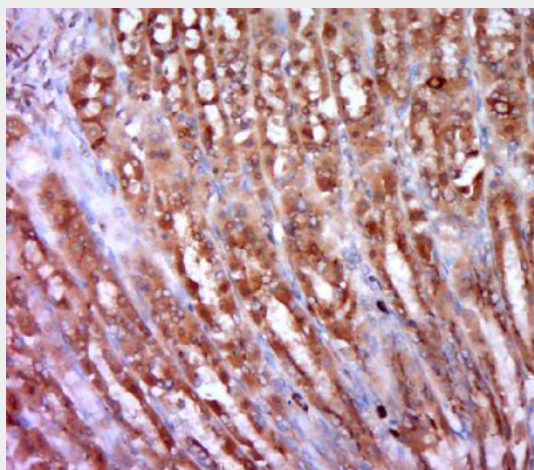
Smooth muscle; contractile or vascular (for the long form)

Smoothelin Polyclonal Antibody - Protocols

Provided below are standard protocols that you may find useful for product applications.

- [Western Blot](#)
- [Blocking Peptides](#)
- [Dot Blot](#)
- [Immunohistochemistry](#)
- [Immunofluorescence](#)
- [Immunoprecipitation](#)
- [Flow Cytometry](#)
- [Cell Culture](#)

Smoothelin Polyclonal Antibody - Images



Paraformaldehyde-fixed, paraffin embedded (rat stomach tissue); Antigen retrieval by boiling in sodium citrate buffer (pH6.0) for 15min; Block endogenous peroxidase by 3% hydrogen peroxide for 20 minutes; Blocking buffer (normal goat serum) at 37°C for 30min; Antibody incubation with (Smoothelin) Polyclonal Antibody, Unconjugated (bs-13740R) at 1:400 overnight at 4°C, followed by a conjugated secondary (sp-0023) for 20 minutes and DAB staining.