

CLDN25 Polyclonal Antibody
Purified Rabbit Polyclonal Antibody (Pab)
Catalog # AP55267**Specification****CLDN25 Polyclonal Antibody - Product Information**

Application	WB, IHC-P, IHC-F, IF, ICC, E
Primary Accession	C9JDP6
Reactivity	Dog
Host	Rabbit
Clonality	Polyclonal
Calculated MW	25 KDa
Physical State	Liquid
Immunogen	KLH conjugated synthetic peptide derived from human CLDN25
Epitope Specificity	101-200/229
Isotype	IgG
Purity	
affinity purified by Protein A	
Buffer	0.01M TBS (pH7.4) with 1% BSA, 0.02% Proclin300 and 50% Glycerol.
SUBCELLULAR LOCATION	Cell junction > tight junction. Cell membrane.
SIMILARITY	Belongs to the claudin family.
Important Note	This product as supplied is intended for research use only, not for use in human, therapeutic or diagnostic applications.

Background Descriptions

Plays a major role in tight junction-specific obliteration of the intercellular space, through calcium-independent cell-adhesion activity.

CLDN25 Polyclonal Antibody - Additional Information

Gene ID 644672

Other Names

Putative claudin-25, CLDN25

Dilution

WB~~1:1000<br \>IHC-P~~N/A<br \>IHC-F~~N/A<br \>IF~~1:50~200<br \>ICC~~N/A<br \>E~~N/A

Storage

Store at -20 °C for one year. Avoid repeated freeze/thaw cycles. When reconstituted in sterile pH 7.4 0.01M PBS or diluent of antibody the antibody is stable for at least two weeks at 2-4 °C.

CLDN25 Polyclonal Antibody - Protein Information

Name CLDN25

Function

Plays a major role in tight junction-specific obliteration of the intercellular space, through calcium-independent cell-adhesion activity.

Cellular Location

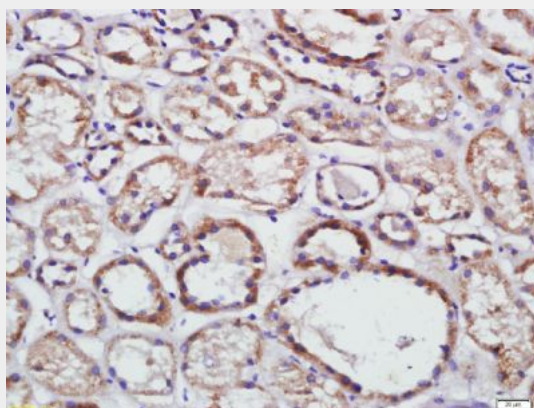
Cell junction, tight junction. Cell membrane; Multi-pass membrane protein

CLDN25 Polyclonal Antibody - Protocols

Provided below are standard protocols that you may find useful for product applications.

- [Western Blot](#)
- [Blocking Peptides](#)
- [Dot Blot](#)
- [Immunohistochemistry](#)
- [Immunofluorescence](#)
- [Immunoprecipitation](#)
- [Flow Cytometry](#)
- [Cell Culture](#)

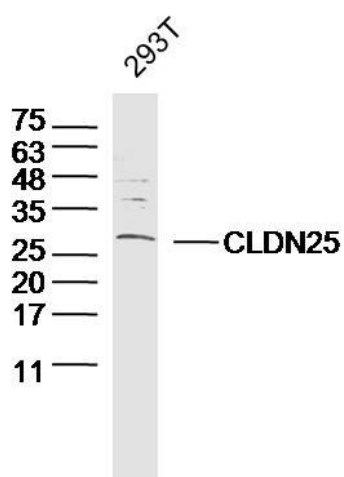
CLDN25 Polyclonal Antibody - Images



Tissue/cell: human kidney tissue; 4% Paraformaldehyde-fixed and paraffin-embedded;

Antigen retrieval: citrate buffer (0.01M, pH 6.0), Boiling bathing for 15min; Block endogenous peroxidase by 3% Hydrogen peroxide for 30min; Blocking buffer (normal goat serum,C-0005) at 37°C for 20 min;

Incubation: Anti-CLDN25 Polyclonal Antibody, Unconjugated(bs-13745R) 1:500, overnight at 4°C, followed by conjugation to the secondary antibody(SP-0023) and DAB(C-0010) staining



Sample: 293T (human)cell Lysate at 40 ug
Primary: Anti- CLDN25(bs-13745R)at 1/300 dilution
Secondary: IRDye800CW Goat Anti-Rabbit IgG at 1/20000 dilution
Predicted band size: 25kD
Observed band size: 28 kD