

Claudin 23 Polyclonal Antibody
Purified Rabbit Polyclonal Antibody (Pab)
Catalog # AP55268**Specification****Claudin 23 Polyclonal Antibody - Product Information**

Application	IHC-P, IHC-F, IF, ICC, E
Primary Accession	Q96B33
Reactivity	Rat, Pig, Dog, Bovine
Host	Rabbit
Clonality	Polyclonal
Calculated MW	32 KDa
Physical State	Liquid
Immunogen	KLH conjugated synthetic peptide derived from human Claudin 23
Epitope Specificity	25-81/292
Isotype	IgG
Purity	
affinity purified by Protein A	
Buffer	0.01M TBS (pH7.4) with 1% BSA, 0.02% Proclin300 and 50% Glycerol.
SUBCELLULAR LOCATION	Integral membrane protein. Tight junctions
SIMILARITY	Belongs to the claudin family.
Important Note	This product as supplied is intended for research use only, not for use in human, therapeutic or diagnostic applications.

Background Descriptions

The claudin superfamily consists of structurally related proteins that are important structural and functional components of tight junctions. Claudin-23, also known as CLDN23 or CLDNL, is a 292 amino acid multi-pass membrane protein that localizes to cell junctions and belongs to the claudin family. Expressed in stomach and placenta, as well as in germinal center B-cells, claudin-23 is thought to exhibit calcium-dependent cell-adhesion activity through which it plays an essential role in tight junction-specific obliteration of the intercellular space. Human claudin-23 shares 80% sequence similarity with its mouse counterpart, suggesting a conserved role between species. Overexpression of claudin-23 is associated with colon tumors, implicating claudin-23 as a possible metastasis factor.

Claudin 23 Polyclonal Antibody - Additional Information**Gene ID** 137075**Other Names**

Claudin-23, CLDN23

Dilution

IHC-P ~ ~ N/A
IHC-F ~ ~ N/A

=IF~~1:50~200<br \>ICC~~N/A<br \>E~~N/A

Format

0.01M TBS(pH7.4), 0.09% (W/V) sodium azide and 50% Glyce

Storage

Store at -20 °C for one year. Avoid repeated freeze/thaw cycles. When reconstituted in sterile pH 7.4 0.01M PBS or diluent of antibody the antibody is stable for at least two weeks at 2-4 °C.

Claudin 23 Polyclonal Antibody - Protein Information

Name CLDN23

Function

Plays a major role in tight junction-specific obliteration of the intercellular space, through calcium-independent cell-adhesion activity.

Cellular Location

Cell junction, tight junction. Cell membrane; Multi-pass membrane protein

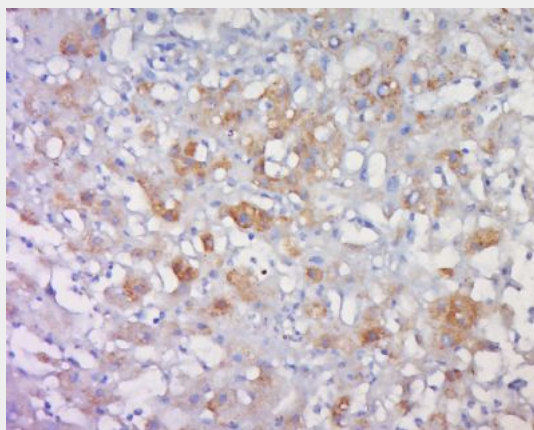
Tissue Location

Expressed in germinal center B-cells, placenta, stomach as well as in colon tumor.

Claudin 23 Polyclonal Antibody - Protocols

Provided below are standard protocols that you may find useful for product applications.

- [Western Blot](#)
- [Blocking Peptides](#)
- [Dot Blot](#)
- [Immunohistochemistry](#)
- [Immunofluorescence](#)
- [Immunoprecipitation](#)
- [Flow Cytometry](#)
- [Cell Culture](#)

Claudin 23 Polyclonal Antibody - Images

Tissue/cell: human liver cancer; 4% Paraformaldehyde-fixed and paraffin-embedded;
Antigen retrieval: citrate buffer (0.01M, pH 6.0), Boiling bathing for 15min; Block endogenous peroxidase by 3% Hydrogen peroxide for 30min; Blocking buffer (normal goat serum,C-0005) at 37°C for 20 min;
Incubation: Anti-Claudin 23 Polyclonal Antibody, Unconjugated(bs-13746R) 1:500, overnight at 4°C, followed by conjugation to the secondary antibody(SP-0023) and DAB(C-0010) staining