

CCDC64 Polyclonal Antibody
Purified Rabbit Polyclonal Antibody (Pab)
Catalog # AP55302**Specification**

CCDC64 Polyclonal Antibody - Product Information

Application	WB, IHC-P, IHC-F, IF, ICC, E
Primary Accession	Q6ZP65
Reactivity	Rat, Pig, Bovine
Host	Rabbit
Clonality	Polyclonal
Calculated MW	64841

CCDC64 Polyclonal Antibody - Additional Information**Gene ID** 92558**Other Names**

BICD family-like cargo adapter 1, Bicaudal D-related protein 1, BICD-related protein 1, BICDR-1, Coiled-coil domain-containing protein 64A, CCDC64A, BICDL1, BICDR1, CCDC64

Dilution

WB~1:1000
IHC-P~N/A
IHC-F~N/A
IF~1:50~200
ICC~N/A
E~N/A

Format

0.01M TBS(pH7.4), 0.09% (W/V) sodium azide and 50% Glyce

Storage

Store at -20 °C for one year. Avoid repeated freeze/thaw cycles. When reconstituted in sterile pH 7.4 0.01M PBS or diluent of antibody the antibody is stable for at least two weeks at 2-4 °C.

CCDC64 Polyclonal Antibody - Protein Information**Name** BICDL1**Synonyms** BICDR1, CCDC64**Function**

Acts as an adapter protein linking the dynein motor complex to various cargos and converts dynein from a non-processive to a highly processive motor in the presence of dynactin. Facilitates the interaction between dynein and dynactin and activates dynein processivity (the ability to move along a microtubule for a long distance without falling off the track). Predominantly recruits 2 dyneins, which increases both the force and speed of the microtubule motor. Component of secretory vesicle machinery in developing neurons that acts as a regulator of neurite outgrowth.

Regulates the secretory vesicle transport by controlling the accumulation of Rab6-containing secretory vesicles in the pericentrosomal region restricting anterograde secretory transport during the early phase of neuronal differentiation, thereby inhibiting neuritogenesis.

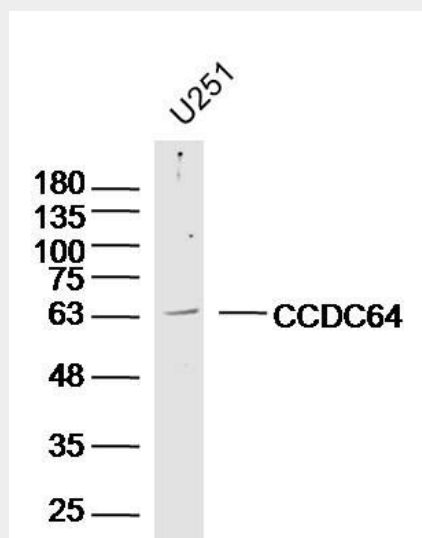
Cellular Location

Cytoplasm, cytoskeleton {ECO:0000250|UniProtKB:A0JNT9}. Cytoplasm, cytoskeleton, microtubule organizing center, centrosome {ECO:0000250|UniProtKB:A0JNT9} Note=Localizes around the centrosome. {ECO:0000250|UniProtKB:A0JNT9}

CCDC64 Polyclonal Antibody - Protocols

Provided below are standard protocols that you may find useful for product applications.

- [Western Blot](#)
- [Blocking Peptides](#)
- [Dot Blot](#)
- [Immunohistochemistry](#)
- [Immunofluorescence](#)
- [Immunoprecipitation](#)
- [Flow Cytometry](#)
- [Cell Culture](#)

CCDC64 Polyclonal Antibody - Images

Sample: U251(human) Cell Lysate at 40 ug
Primary: Anti-CCDC64 (bs-13808R) at 1/300 dilution
Secondary: IRDye800CW Goat Anti-Rabbit IgG at 1/20000 dilution
Predicted band size: 65 kD
Observed band size: 63 kD