

CENPL Polyclonal Antibody
Purified Rabbit Polyclonal Antibody (Pab)
Catalog # AP55313**Specification****CENPL Polyclonal Antibody - Product Information**

| | |
|--------------------------------|--|
| Application | WB, IHC-P, IHC-F, IF, ICC |
| Primary Accession | Q8N0S6 |
| Reactivity | Rat, Pig, Dog, Bovine |
| Host | Rabbit |
| Clonality | Polyclonal |
| Calculated MW | 39 KDa |
| Physical State | Liquid |
| Immunogen | KLH conjugated synthetic peptide derived from human CENPL |
| Epitope Specificity | 51-150/344 |
| Isotype | IgG |
| Purity | |
| affinity purified by Protein A | |
| Buffer | 0.01M TBS (pH7.4) with 1% BSA, 0.02% Proclin300 and 50% Glycerol. |
| SUBCELLULAR LOCATION | Nucleus. Chromosome > centromere. Localizes exclusively in the centromeres. The CENPA-CAD complex is probably recruited on centromeres by the CENPA-NAC complex. |
| Important Note | This product as supplied is intended for research use only, not for use in human, therapeutic or diagnostic applications. |

Background Descriptions

CENPL is a subunit of a CENPH (MIM 605607)-CENPI (MIM 300065)-associated centromeric complex that targets CENPA (MIM 117139) to centromeres and is required for proper kinetochore function and mitotic progression (Okada et al., 2006) [PubMed 16622420].[supplied by OMIM, Mar 2008]

CENPL Polyclonal Antibody - Additional Information

Gene ID 91687

Other Names

Centromere protein L, CENP-L, Interphase centromere complex protein 33, CENPL, C1orf155, ICEN33

Dilution

WB~~1:1000
IHC-P~~N/A
IHC-F~~N/A
IF~~1:50~200
ICC~~N/A

Format

0.01M TBS(pH7.4), 0.09% (W/V) sodium azide and 50% Glyce

Storage

Store at -20 °C for one year. Avoid repeated freeze/thaw cycles. When reconstituted in sterile pH 7.4 0.01M PBS or diluent of antibody the antibody is stable for at least two weeks at 2-4 °C.

CENPL Polyclonal Antibody - Protein Information

Name CENPL

Synonyms C1orf155, ICEN33

Function

Component of the CENPA-CAD (nucleosome distal) complex, a complex recruited to centromeres which is involved in assembly of kinetochore proteins, mitotic progression and chromosome segregation. May be involved in incorporation of newly synthesized CENPA into centromeres via its interaction with the CENPA-NAC complex.

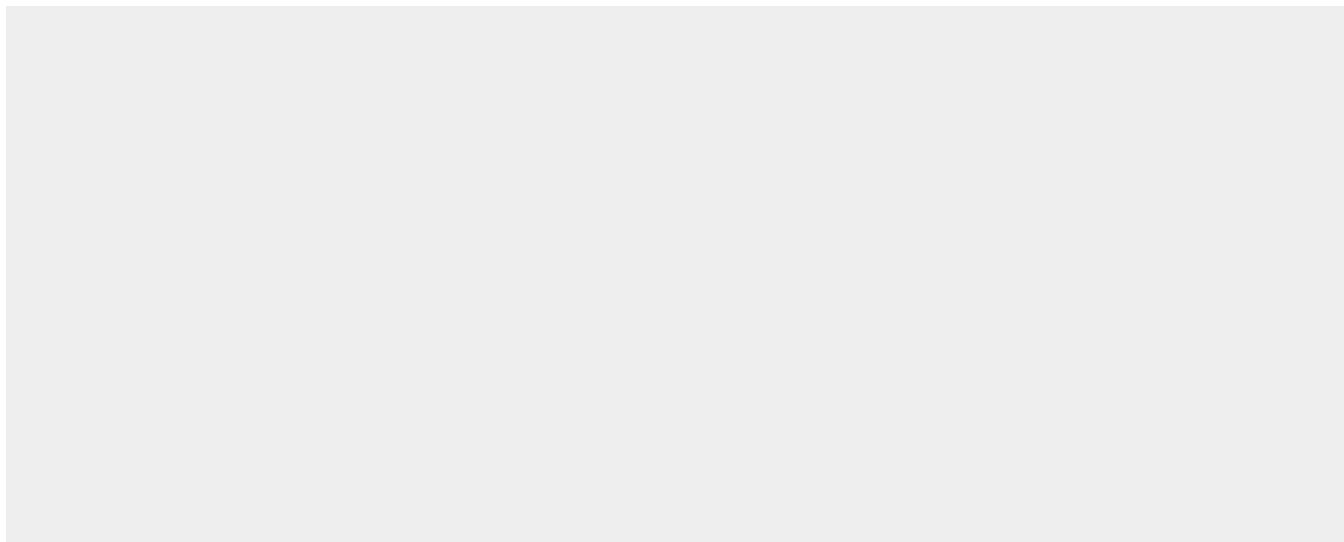
Cellular Location

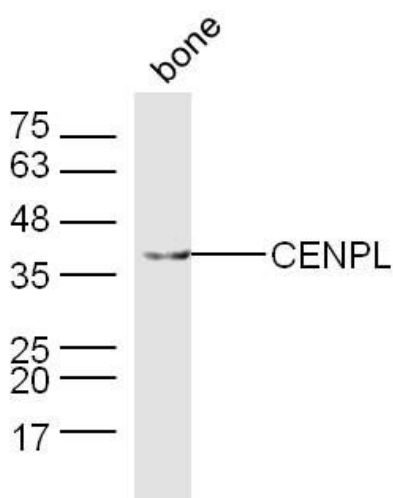
Nucleus. Chromosome, centromere. Note=Localizes exclusively in the centromeres. The CENPA-CAD complex is probably recruited on centromeres by the CENPA-NAC complex

CENPL Polyclonal Antibody - Protocols

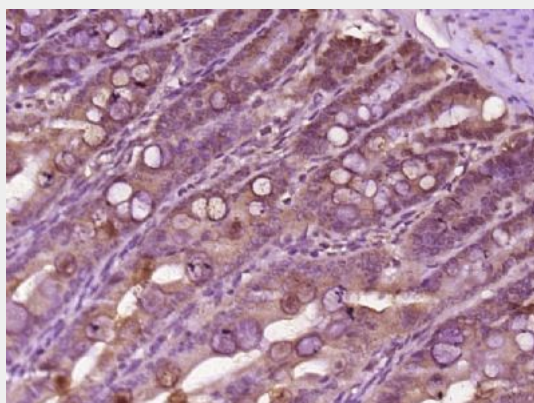
Provided below are standard protocols that you may find useful for product applications.

- [Western Blot](#)
- [Blocking Peptides](#)
- [Dot Blot](#)
- [Immunohistochemistry](#)
- [Immunofluorescence](#)
- [Immunoprecipitation](#)
- [Flow Cytometry](#)
- [Cell Culture](#)

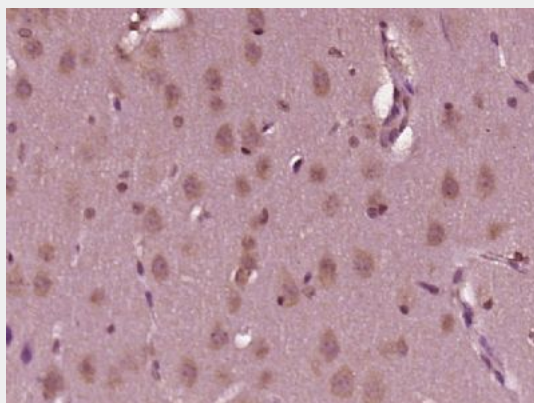
CENPL Polyclonal Antibody - Images



Sample: bone (Mouse) Lysate at 40 ug
Primary: Anti-CENPL(bs-13836R) at 1/300 dilution
Secondary: IRDye800CW Goat Anti-Rabbit IgG at 1/20000 dilution
Predicted band size: 39 kD
Observed band size: 39 kD



Paraformaldehyde-fixed, paraffin embedded (rat colon tissue); Antigen retrieval by boiling in sodium citrate buffer (pH6.0) for 15min; Block endogenous peroxidase by 3% hydrogen peroxide for 20 minutes; Blocking buffer (normal goat serum) at 37°C for 30min; Antibody incubation with (CENPL) Polyclonal Antibody, Unconjugated (bs-13836R) at 1:400 overnight at 4°C, followed by operating according to SP Kit(Rabbit) (sp-0023) instructions and DAB staining.



Paraformaldehyde-fixed, paraffin embedded (rat brain tissue); Antigen retrieval by boiling in sodium citrate buffer (pH6.0) for 15min; Block endogenous peroxidase by 3% hydrogen peroxide for 20 minutes; Blocking buffer (normal goat serum) at 37°C for 30min; Antibody incubation with (CENPL) Polyclonal Antibody, Unconjugated (bs-13836R) at 1:400 overnight at 4°C, followed by operating according to SP Kit(Rabbit) (sp-0023) instructions and DAB staining.