

CEP120 Polyclonal Antibody
Purified Rabbit Polyclonal Antibody (Pab)
Catalog # AP55319**Specification**

CEP120 Polyclonal Antibody - Product Information

Application	IHC-P, IF, WB
Primary Accession	Q8N960
Reactivity	Rat
Host	Rabbit
Clonality	Polyclonal
Calculated MW	112640

CEP120 Polyclonal Antibody - Additional Information**Gene ID** 153241**Other Names**

Centrosomal protein of 120 kDa, Cep120, Coiled-coil domain-containing protein 100, CEP120, CCDC100

Format

0.01M TBS(pH7.4), 0.09% (W/V) sodium azide and 50% Glyce

Storage

Store at -20 °C for one year. Avoid repeated freeze/thaw cycles. When reconstituted in sterile pH 7.4 0.01M PBS or diluent of antibody the antibody is stable for at least two weeks at 2-4 °C.

CEP120 Polyclonal Antibody - Protein Information**Name** CEP120**Synonyms** CCDC100**Function**

Plays a role in the microtubule-dependent coupling of the nucleus and the centrosome. Involved in the processes that regulate centrosome-mediated interkinetic nuclear migration (INM) of neural progenitors and for proper positioning of neurons during brain development. Also implicated in the migration and selfrenewal of neural progenitors. Required for centriole duplication and maturation during mitosis and subsequent ciliogenesis (By similarity). Required for the recruitment of CEP295 to the proximal end of new-born centrioles at the centriolar microtubule wall during early S phase in a PLK4-dependent manner (PubMed:27185865).

Cellular Location

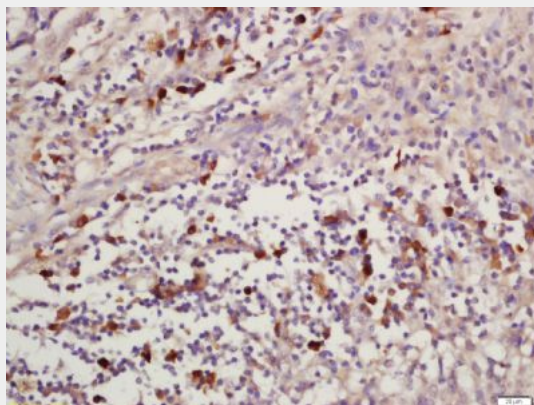
Cytoplasm, cytoskeleton, microtubule organizing center, centrosome. Note=Regulates the localization of TACC3 to the centrosome in neural progenitors in vivo

CEP120 Polyclonal Antibody - Protocols

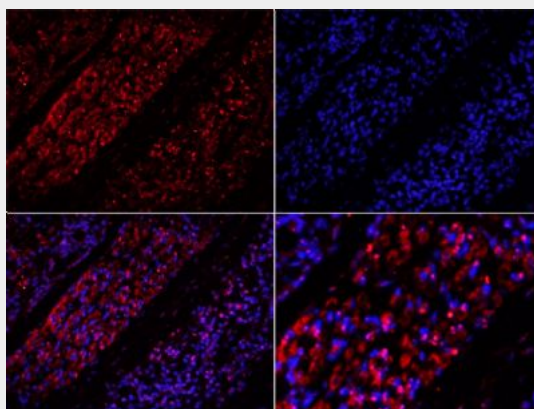
Provided below are standard protocols that you may find useful for product applications.

- [Western Blot](#)
- [Blocking Peptides](#)
- [Dot Blot](#)
- [Immunohistochemistry](#)
- [Immunofluorescence](#)
- [Immunoprecipitation](#)
- [Flow Cytometry](#)
- [Cell Culture](#)

CEP120 Polyclonal Antibody - Images

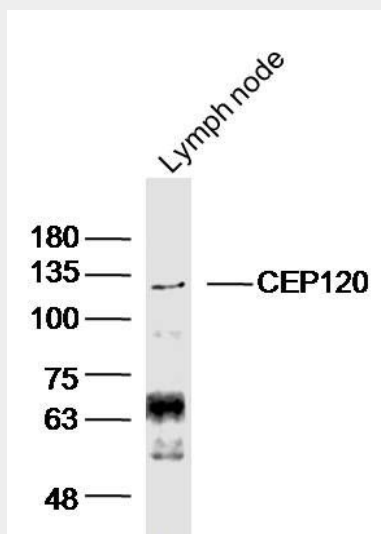


Tissue/cell: human laryngo carcinoma; 4% Paraformaldehyde-fixed and paraffin-embedded;
Antigen retrieval: citrate buffer (0.01M, pH 6.0), Boiling bathing for 15min; Block endogenous peroxidase by 3% Hydrogen peroxide for 30min; Blocking buffer (normal goat serum,C-0005) at 37°C for 20 min;
Incubation: Anti-CEP120 Polyclonal Antibody, Unconjugated(bs-13850R) 1:200, overnight at 4°C, followed by conjugation to the secondary antibody(SP-0023) and DAB(C-0010) staining



Tissue/cell: mouse embryo tissue;4% Paraformaldehyde-fixed and paraffin-embedded;
Antigen retrieval: citrate buffer (0.01M, pH 6.0), Boiling bathing for 15min; Blocking buffer (normal goat serum,C-0005) at 37°C for 20 min;
Incubation: Anti-CEP120 Polyclonal Antibody, Unconjugated(bs-13850R) 1:200, overnight at 4°C;

The secondary antibody was Goat Anti-Rabbit IgG, Cy3 conjugated(bs-0295G-Cy3)used at 1:200 dilution for 40 minutes at 37°C. DAPI(5ug/ml,blue,C-0033) was used to stain the cell nuclei



Sample: Lymph node (mouse) Lysate at 40 ug
Primary: Anti- CEP120(bs-13850R)at 1/300 dilution
Secondary: IRDye800CW Goat Anti-Rabbit IgG at 1/20000 dilution
Predicted band size: 112kD
Observed band size: 130kD