

CILP Polyclonal Antibody
Purified Rabbit Polyclonal Antibody (Pab)
Catalog # AP55354**Specification**

CILP Polyclonal Antibody - Product Information

Application	WB, IHC-P, IHC-F, IF, ICC, E
Primary Accession	O75339
Reactivity	Rat, Bovine
Host	Rabbit
Clonality	Polyclonal
Calculated MW	132565

CILP Polyclonal Antibody - Additional Information**Gene ID** 8483**Other Names**

Cartilage intermediate layer protein 1, CILP-1, Cartilage intermediate-layer protein, Cartilage intermediate layer protein 1 C1, Cartilage intermediate layer protein 1 C2, CILP

Dilution

WB~1:1000
IHC-P~N/A
IHC-F~N/A
IF~1:50~200
ICC~N/A
E~N/A

Format

0.01M TBS(pH7.4), 0.09% (W/V) sodium azide and 50% Glyce

Storage

Store at -20 °C for one year. Avoid repeated freeze/thaw cycles. When reconstituted in sterile pH 7.4 0.01M PBS or diluent of antibody the antibody is stable for at least two weeks at 2-4 °C.

CILP Polyclonal Antibody - Protein Information**Name** CILP**Function**

Probably plays a role in cartilage scaffolding. May act by antagonizing TGF-beta1 (TGFB1) and IGF1 functions. Has the ability to suppress IGF1-induced proliferation and sulfated proteoglycan synthesis, and inhibits ligand-induced IGF1R autophosphorylation. May inhibit TGFB1-mediated induction of cartilage matrix genes via its interaction with TGFB1. Overexpression may lead to impair chondrocyte growth and matrix repair and indirectly promote inorganic pyrophosphate (PPi) supersaturation in aging and osteoarthritis cartilage.

Cellular Location

Secreted, extracellular space, extracellular matrix

Tissue Location

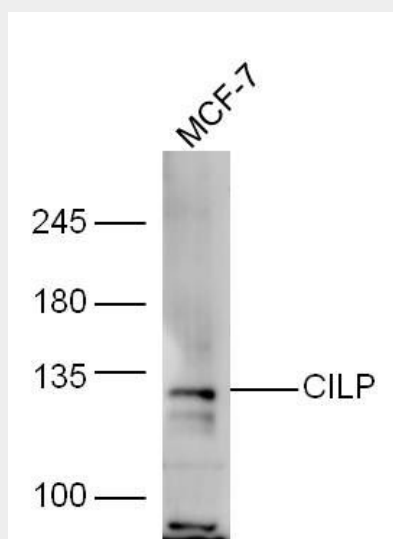
Specifically expressed in cartilage. Localizes in the intermediates layer of articular cartilage but neither in the superficial nor in the deepest regions. Specifically and highly expressed in intervertebral disk tissue. Expression increases with aging in hip articular cartilage. Overexpressed in articular hyaline cartilage from patients with calcium pyrophosphate dihydrate crystal deposition disease (CPPD). Expression in intervertebral disk tissue from individuals with lumbar disk disease increases as disk degeneration progresses.

CILP Polyclonal Antibody - Protocols

Provided below are standard protocols that you may find useful for product applications.

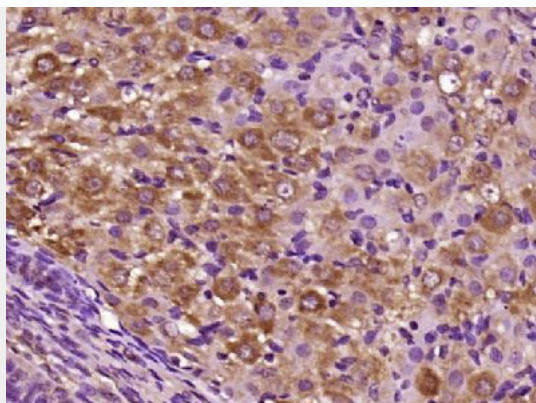
- [Western Blot](#)
- [Blocking Peptides](#)
- [Dot Blot](#)
- [Immunohistochemistry](#)
- [Immunofluorescence](#)
- [Immunoprecipitation](#)
- [Flow Cytometry](#)
- [Cell Culture](#)

CILP Polyclonal Antibody - Images



Sample:

MCF-7 Cell (Human) Lysate at 30 ug
Primary: Anti-CILP (bs-13954R) at 1/300 dilution
Secondary: IRDye800CW Goat Anti-Rabbit IgG at 1/20000 dilution
Predicted band size: 132 kD
Observed band size: 132 kD



Paraformaldehyde-fixed, paraffin embedded (Rat ovary); Antigen retrieval by boiling in sodium citrate buffer (pH6.0) for 15min; Block endogenous peroxidase by 3% hydrogen peroxide for 20 minutes; Blocking buffer (normal goat serum) at 37°C for 30min; Antibody incubation with (CILP) Polyclonal Antibody, Unconjugated (bs-13954R) at 1:400 overnight at 4°C, followed by operating according to SP Kit(Rabbit) (sp-0023) instructions and DAB staining.