

CR1L Polyclonal Antibody
Purified Rabbit Polyclonal Antibody (Pab)
Catalog # AP55394**Specification**

CR1L Polyclonal Antibody - Product Information

Application	WB
Primary Accession	Q2VPA4
Reactivity	Rat
Host	Rabbit
Clonality	Polyclonal
Calculated MW	62714

CR1L Polyclonal Antibody - Additional Information**Gene ID** 1379**Other Names**

Complement component receptor 1-like protein, Complement C4b-binding protein CR-1-like protein, CR1L

Format

0.01M TBS(pH7.4), 0.09% (W/V) sodium azide and 50% Glyce

Storage

Store at -20 °C for one year. Avoid repeated freeze/thaw cycles. When reconstituted in sterile pH 7.4 0.01M PBS or diluent of antibody the antibody is stable for at least two weeks at 2-4 °C.

CR1L Polyclonal Antibody - Protein Information**Name** CR1L**Cellular Location**

Cytoplasm. Membrane. Secreted Note=Predominantly found in association with the membrane fraction, but also located in the cytoplasm and in the supernatant

Tissue Location

Expressed in fetal liver and to a lesser extent in fetal spleen and thymus. Expression appears to be limited to hematopoietic and fetal lymphoid tissue.

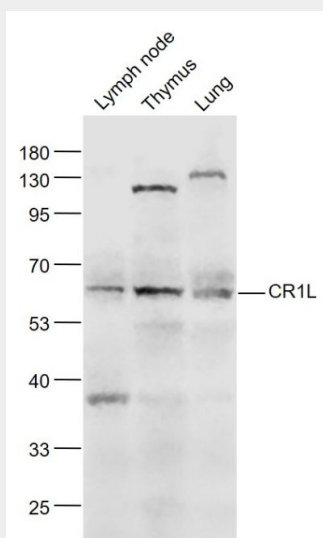
CR1L Polyclonal Antibody - Protocols

Provided below are standard protocols that you may find useful for product applications.

- [Western Blot](#)
- [Blocking Peptides](#)

- [Dot Blot](#)
- [Immunohistochemistry](#)
- [Immunofluorescence](#)
- [Immunoprecipitation](#)
- [Flow Cytometry](#)
- [Cell Culture](#)

CR1L Polyclonal Antibody - Images



Sample:

Lymph node (Mouse) Lysate at 40 ug

Thymus (Mouse) Lysate at 40 ug

Lung (Mouse) Lysate at 40 ug

Primary: Anti- CR1L (bs14042R) at 1/1000 dilution

Secondary: IRDye800CW Goat Anti-Rabbit IgG at 1/20000 dilution

Predicted band size: 64kD

Observed band size: 64kD