

**CRCP Polyclonal Antibody**  
**Purified Rabbit Polyclonal Antibody (Pab)**  
**Catalog # AP55397**

**Specification**

**CRCP Polyclonal Antibody - Product Information**

Application	WB, IHC-P, IHC-F, IF, ICC, E
Primary Accession	<a href="#">O75575</a>
Reactivity	Rat, Dog, Bovine
Host	Rabbit
Clonality	Polyclonal
Calculated MW	21 KDa
Physical State	Liquid
Immunogen	KLH conjugated synthetic peptide derived from human CRCP
Epitope Specificity	21-120/148
Isotype	IgG
<b>Purity</b>	
affinity purified by Protein A	
Buffer	0.01M TBS (pH7.4) with 1% BSA, 0.02% Proclin300 and 50% Glycerol.
SUBCELLULAR LOCATION	Nucleus. Cell membrane.
SIMILARITY	Belongs to the eukaryotic RPC9 RNA polymerase subunit family.
Important Note	This product as supplied is intended for research use only, not for use in human, therapeutic or diagnostic applications.

**Background Descriptions**

This gene encodes a membrane protein that functions as part of a receptor complex for a small neuropeptide that increases intracellular cAMP levels. Alternate transcriptional splice variants, encoding different isoforms, have been characterized. [provided by RefSeq, Jul 2008]

**CRCP Polyclonal Antibody - Additional Information**

**Gene ID** 27297

**Other Names**

DNA-directed RNA polymerase III subunit RPC9, RNA polymerase III subunit C9, Calcitonin gene-related peptide-receptor component protein, CGRP-RCP, CGRP-receptor component protein, CGRPRCP, HsC17, CRCP

**Target/Specificity**

Ubiquitous. Most prevalent in testis.

**Dilution**

<span class = "dilution\_WB">WB~~1:1000</span><br \><span class = "dilution\_IHC-P">IHC-P~~N/A</span><br \><span class = "dilution\_IHC-F">IHC-F~~N/A</span><br \><span class

=["dilution\\_IF">IF~1:50~200</a><br \>\["dilution\\\_ICC">ICC~N/A</a><br \>\\["dilution\\\\_E">E~N/A</a>\\]\\(#\\)\]\(#\)](#)

**Format**

0.01M TBS(pH7.4), 0.09% (W/V) sodium azide and 50% Glyce

**Storage**

Store at -20 °C for one year. Avoid repeated freeze/thaw cycles. When reconstituted in sterile pH 7.4 0.01M PBS or diluent of antibody the antibody is stable for at least two weeks at 2-4 °C.

**CRCP Polyclonal Antibody - Protein Information**

**Name** CRCP ([HGNC:17888](#))

**Function**

DNA-dependent RNA polymerase catalyzes the transcription of DNA into RNA using the four ribonucleoside triphosphates as substrates (PubMed:[20413673](#), PubMed:[33558764](#), PubMed:[34675218](#)). Specific peripheric component of RNA polymerase III (Pol III) which synthesizes small non-coding RNAs including 5S rRNA, snRNAs, tRNAs and miRNAs from at least 500 distinct genomic loci. With POLR3H/RPC8 forms a mobile stalk that protrudes from Pol III core and functions primarily in transcription initiation (By similarity) (PubMed:[20413673](#), PubMed:[33558764](#), PubMed:[33558766](#), PubMed:[34675218](#)). Pol III plays a key role in sensing and limiting infection by intracellular bacteria and DNA viruses. Acts as nuclear and cytosolic DNA sensor involved in innate immune response. Can sense non-self dsDNA that serves as template for transcription into dsRNA. The non-self RNA polymerase III transcripts, such as Epstein-Barr virus-encoded RNAs (EBERs) induce type I interferon and NF-kappa-B through the RIG-I pathway (PubMed:[19609254](#), PubMed:[19631370](#)).

**Cellular Location**

Nucleus. Cell membrane {ECO:0000250|UniProtKB:O35427}; Peripheral membrane protein {ECO:0000250|UniProtKB:O35427}; Cytoplasmic side {ECO:0000250|UniProtKB:O35427}

**Tissue Location**

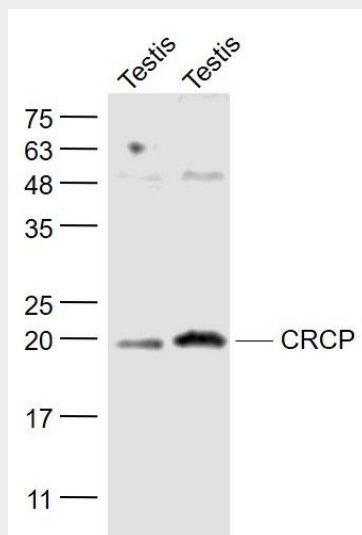
Ubiquitous. Most prevalent in testis.

**CRCP Polyclonal Antibody - Protocols**

Provided below are standard protocols that you may find useful for product applications.

- [Western Blot](#)
- [Blocking Peptides](#)
- [Dot Blot](#)
- [Immunohistochemistry](#)
- [Immunofluorescence](#)
- [Immunoprecipitation](#)

- [Flow Cytometry](#)
- [Cell Culture](#)

**CRCP Polyclonal Antibody - Images****Sample:**

Testis (Mouse) Lysate at 40 ug

Testis (Rat) Lysate at 40 ug

Primary: Anti- CRCP (bs-14048R) at 1/1000 dilution

Secondary: IRDye800CW Goat Anti-Rabbit IgG at 1/20000 dilution

Predicted band size: 21 kD

Observed band size: 20 kD