

CSAG1 Polyclonal Antibody
Purified Rabbit Polyclonal Antibody (Pab)
Catalog # AP55413

Specification

CSAG1 Polyclonal Antibody - Product Information

Application	IHC-P, IHC-F, IF, ICC, E
Primary Accession	Q6PB30
Host	Rabbit
Clonality	Polyclonal
Calculated MW	6.7 KDa
Physical State	Liquid
Immunogen	KLH conjugated synthetic peptide derived from human CSAG1
Epitope Specificity	22-78/78
Isotype	IgG
Purity	
affinity purified by Protein A	
Buffer	0.01M TBS (pH7.4) with 1% BSA, 0.02% Proclin300 and 50% Glycerol.
SUBCELLULAR LOCATION	Expressed in chondrosarcoma, melanoma, cartilage and testis, but not in other normal tissues.
Important Note	This product as supplied is intended for research use only, not for use in human, therapeutic or diagnostic applications.

Background Descriptions

This gene encodes a member of a family of tumor antigens. The protein is expressed in chondrosarcomas, but may also be expressed in normal tissues such as testis. Alternative splicing of this gene results in two transcript variants encoding the same protein. [provided by RefSeq, Jul 2008]

CSAG1 Polyclonal Antibody - Additional Information

Gene ID 158511

Other Names

Putative chondrosarcoma-associated gene 1 protein, Cancer/testis antigen 24.1, CT24.1, Cancer/testis antigen CSAGE, CSAG1, CSAGE

Dilution

IHC-P ~ ~ N/A
IHC-F ~ ~ N/A
IF ~ ~ 1:50 ~ 200
ICC ~ ~ N/A
E ~ ~ N/A

Format

0.01M TBS(pH7.4), 0.09% (W/V) sodium azide and 50% Glyce

Storage

Store at -20 °C for one year. Avoid repeated freeze/thaw cycles. When reconstituted in sterile pH 7.4 0.01M PBS or diluent of antibody the antibody is stable for at least two weeks at 2-4 °C.

CSAG1 Polyclonal Antibody - Protein Information

Name CSAG1 ([HGNC:24294](#))

Function

May play an important role in maintaining centrosome integrity during mitosis.

Cellular Location

Cytoplasm, cytoskeleton, microtubule organizing center, centrosome. Cytoplasm, cytoskeleton, spindle pole Note=Localizes at spindle poles and/or centrosomes in both mitotic and interphase cells (PubMed:32295846). Spindle pole localization is more pronounced during mitosis (PubMed:32295846). Centrosomal localization culminates at prophase (PubMed:32295846)

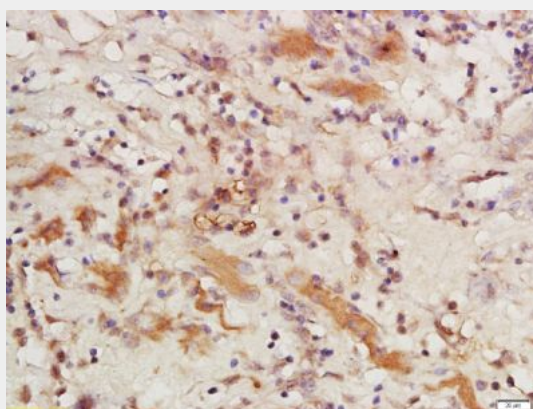
Tissue Location

Expressed in chondrosarcoma, melanoma, cartilage and testis, but not in other normal tissues

CSAG1 Polyclonal Antibody - Protocols

Provided below are standard protocols that you may find useful for product applications.

- [Western Blot](#)
- [Blocking Peptides](#)
- [Dot Blot](#)
- [Immunohistochemistry](#)
- [Immunofluorescence](#)
- [Immunoprecipitation](#)
- [Flow Cytometry](#)
- [Cell Culture](#)

CSAG1 Polyclonal Antibody - Images

Tissue/cell: human laryngocarcinoma; 4% Paraformaldehyde-fixed and paraffin-embedded;
Antigen retrieval: citrate buffer (0.01M, pH 6.0), Boiling bathing for 15min; Block endogenous peroxidase by 3% Hydrogen peroxide for 30min; Blocking buffer (normal goat serum,C-0005) at 37°C for 20 min;

Incubation: Anti-CSAG1 Polyclonal Antibody, Unconjugated(bs-14081R) 1:200, overnight at 4°C, followed by conjugation to the secondary antibody(SP-0023) and DAB(C-0010) staining