

CWC15 Polyclonal Antibody
Purified Rabbit Polyclonal Antibody (Pab)
Catalog # AP55425**Specification****CWC15 Polyclonal Antibody - Product Information**

Application	WB, IHC-P, IHC-F, IF, ICC, E
Primary Accession	Q9P013
Reactivity	Rat, Dog, Bovine
Host	Rabbit
Clonality	Polyclonal
Calculated MW	27 KDa
Physical State	Liquid
Immunogen	KLH conjugated synthetic peptide derived from human CWC15/C11orf5
Epitope Specificity	151-229/229
Isotype	IgG
Purity	
affinity purified by Protein A	
Buffer	0.01M TBS (pH7.4) with 1% BSA, 0.02% Proclin300 and 50% Glycerol.
SUBCELLULAR LOCATION	Nucleus
SIMILARITY	Belongs to the CWC15 family.
Important Note	This product as supplied is intended for research use only, not for use in human, therapeutic or diagnostic applications.

Background Descriptions

CWC15 is a 229 amino acid protein involved in pre-mRNA splicing. The gene encoding CWC15 maps to human chromosome 11q21. With approximately 135 million base pairs and 1,400 genes, chromosome 11 makes up around 4% of human genomic DNA and is considered a gene and disease association dense chromosome. The chromosome 11 encoded Atm gene is important for regulation of cell cycle arrest and apoptosis following double strand DNA breaks. Atm mutation leads to the disorder known as ataxia-telangiectasia. The blood disorders Sickle cell anemia and β thalassemia are caused by HBB gene mutations. Wilms' tumors, WAGR syndrome and Denys-Drash syndrome are associated with mutations of the WT1 gene. Jervell and Lange-Nielsen syndrome, Jacobsen syndrome, Niemann-Pick disease, hereditary angioedema and Smith-Lemli-Opitz syndrome are also associated with defects in chromosome 11.

CWC15 Polyclonal Antibody - Additional Information**Gene ID** 51503**Other Names**

Spliceosome-associated protein CWC15 homolog, CWC15, C11orf5

Dilution

WB~~1:1000<br \>IHC-P~~N/A<br \><span class

=IHC-F~~N/A<br \>IF~~1:50~200<br \>ICC~~N/A<br \>E~~N/A

Storage

Store at -20 °C for one year. Avoid repeated freeze/thaw cycles. When reconstituted in sterile pH 7.4 0.01M PBS or diluent of antibody the antibody is stable for at least two weeks at 2-4 °C.

CWC15 Polyclonal Antibody - Protein Information

Name CWC15

Synonyms C11orf5

Function

Involved in pre-mRNA splicing as component of the spliceosome (PubMed:28076346, PubMed:28502770). Component of the PRP19-CDC5L complex that forms an integral part of the spliceosome and is required for activating pre-mRNA splicing. As a component of the minor spliceosome, involved in the splicing of U12-type introns in pre-mRNAs (Probable).

Cellular Location

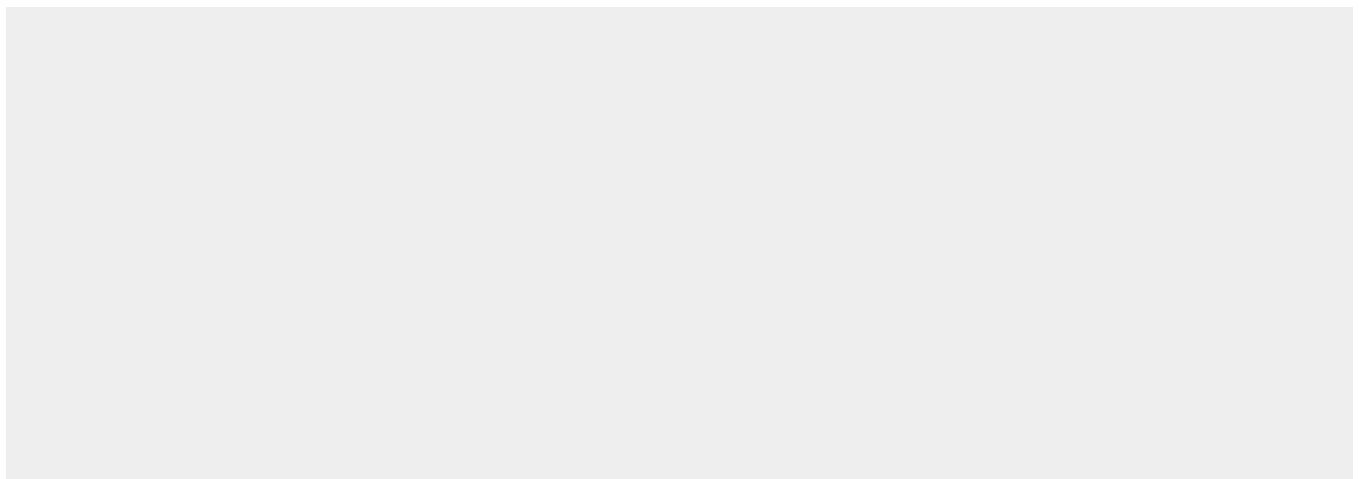
Nucleus

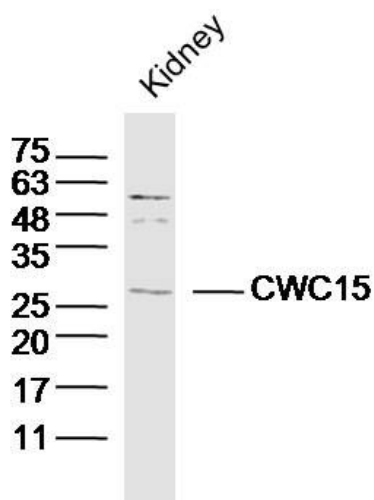
CWC15 Polyclonal Antibody - Protocols

Provided below are standard protocols that you may find useful for product applications.

- [Western Blot](#)
- [Blocking Peptides](#)
- [Dot Blot](#)
- [Immunohistochemistry](#)
- [Immunofluorescence](#)
- [Immunoprecipitation](#)
- [Flow Cytometry](#)
- [Cell Culture](#)

CWC15 Polyclonal Antibody - Images





Sample: Kidney(Mouse)Lysate at 40 ug
Primary: Anti-CWC15(bs-14110R) at 1/300 dilution
Secondary: IRDye800CW Goat Anti-RabbitIgG at 1/20000 dilution
Predicted band size: 27kD
Observed band size: 27kD