

Cyclophilin E Polyclonal Antibody
Purified Rabbit Polyclonal Antibody (Pab)
Catalog # AP55435**Specification**

Cyclophilin E Polyclonal Antibody - Product Information

Application	IHC-P, IHC-F, IF, ICC, E
Primary Accession	Q9UNP9
Reactivity	Rat, Dog, Bovine
Host	Rabbit
Clonality	Polyclonal
Calculated MW	33 KDa
Physical State	Liquid
Immunogen	KLH conjugated synthetic peptide derived from human Cyclophilin E
Epitope Specificity	201-301/301
Isotype	IgG
Purity	
affinity purified by Protein A	
Buffer	0.01M TBS (pH7.4) with 1% BSA, 0.02% Proclin300 and 50% Glycerol.
SUBCELLULAR LOCATION	Nucleus.
SIMILARITY	Belongs to the cyclophilin-type PPlase family. PPlase E subfamily. Contains 1 PPlase cyclophilin-type domain. Contains 1 RRM (RNA recognition motif) domain.
Important Note	This product as supplied is intended for research use only, not for use in human, therapeutic or diagnostic applications.

Background Descriptions

The protein encoded by this gene is a member of the peptidyl-prolyl cis-trans isomerase (PPlase) family. PPlases catalyze the cis-trans isomerization of proline imidic peptide bonds in oligopeptides and accelerate the folding of proteins. This protein contains a highly conserved cyclophilin (CYP) domain as well as an RNA-binding domain. It was shown to possess PPlase and protein folding activities, and it also exhibits RNA-binding activity. Alternative splicing results in multiple transcript variants. A related pseudogene, which is also located on chromosome 1, has been identified. [provided by RefSeq, Aug 2010]

Cyclophilin E Polyclonal Antibody - Additional Information**Gene ID** 10450**Other Names**

Peptidyl-prolyl cis-trans isomerase E, PPlase E, 5.2.1.8, Cyclophilin E, Cyclophilin-33, Rotamase E, PPIE, CYP33 {ECO:0000303|PubMed:8977107}

Target/Specificity

Found in all the examined tissues including heart, brain, placenta, lung, liver, skeletal muscle,

kidney and pancreas.

Dilution

IHC-P ~ ~ N/A IHC-F ~ ~ N/A IF ~ ~ 1:50 ~ 200 ICC ~ ~ N/A E ~ ~ N/A

Format

0.01M TBS(pH7.4), 0.09% (W/V) sodium azide and 50% Glyce

Storage

Store at -20 °C for one year. Avoid repeated freeze/thaw cycles. When reconstituted in sterile pH 7.4 0.01M PBS or diluent of antibody the antibody is stable for at least two weeks at 2-4 °C.

Cyclophilin E Polyclonal Antibody - Protein Information**Name** PPIE

Synonyms CYP33 {ECO:0000303|PubMed:8977107}

Function

Involved in pre-mRNA splicing as component of the spliceosome (PubMed: [11991638](http://www.uniprot.org/citations/11991638), PubMed: [28076346](http://www.uniprot.org/citations/28076346)). Combines RNA-binding and PPlase activities (PubMed: [18258190](http://www.uniprot.org/citations/18258190), PubMed: [20460131](http://www.uniprot.org/citations/20460131), PubMed: [20677832](http://www.uniprot.org/citations/20677832), PubMed: [8977107](http://www.uniprot.org/citations/8977107)). Binds mRNA and has a preference for single-stranded RNA molecules with poly-A and poly-U stretches, suggesting it binds to the poly(A)-region in the 3'-UTR of mRNA molecules (PubMed: [18258190](http://www.uniprot.org/citations/18258190), PubMed: [20460131](http://www.uniprot.org/citations/20460131), PubMed: [8977107](http://www.uniprot.org/citations/8977107)). Catalyzes the cis-trans isomerization of proline imidic peptide bonds in proteins (PubMed: [18258190](http://www.uniprot.org/citations/18258190), PubMed: [20541251](http://www.uniprot.org/citations/20541251), PubMed: [20677832](http://www.uniprot.org/citations/20677832), PubMed: [8977107](http://www.uniprot.org/citations/8977107)). Inhibits KMT2A activity; this requires proline isomerase activity (PubMed: [20460131](http://www.uniprot.org/citations/20460131), PubMed: [20541251](http://www.uniprot.org/citations/20541251), PubMed: [20677832](http://www.uniprot.org/citations/20677832)).

Cellular Location

Nucleus

Tissue Location

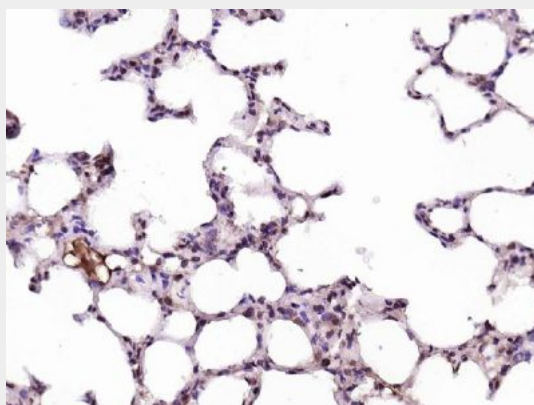
Found in all the examined tissues including heart, brain, placenta, lung, liver, skeletal muscle, kidney and pancreas

Cyclophilin E Polyclonal Antibody - Protocols

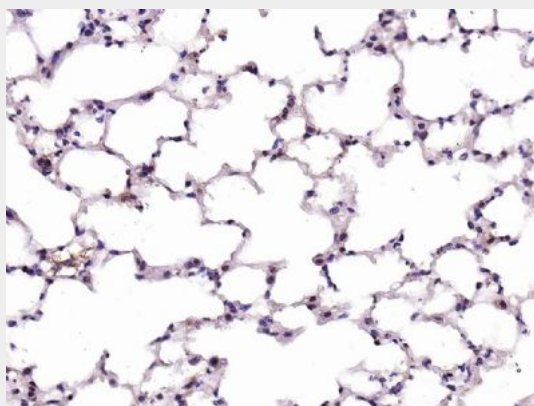
Provided below are standard protocols that you may find useful for product applications.

- [Western Blot](#)
- [Blocking Peptides](#)
- [Dot Blot](#)
- [Immunohistochemistry](#)
- [Immunofluorescence](#)
- [Immunoprecipitation](#)
- [Flow Cytometry](#)
- [Cell Culture](#)

Cyclophilin E Polyclonal Antibody - Images



Paraformaldehyde-fixed, paraffin embedded (rat lung); Antigen retrieval by boiling in sodium citrate buffer (pH6.0) for 15min; Block endogenous peroxidase by 3% hydrogen peroxide for 20 minutes; Blocking buffer (normal goat serum) at 37°C for 30min; Antibody incubation with (Cyclophilin E) Polyclonal Antibody, Unconjugated (bs-14138R) at 1:200 overnight at 4°C, followed by operating according to SP Kit(Rabbit) (sp-0023) instructions and DAB staining.



Paraformaldehyde-fixed, paraffin embedded (mouse lung); Antigen retrieval by boiling in sodium citrate buffer (pH6.0) for 15min; Block endogenous peroxidase by 3% hydrogen peroxide for 20 minutes; Blocking buffer (normal goat serum) at 37°C for 30min; Antibody incubation with (Cyclophilin E) Polyclonal Antibody, Unconjugated (bs-14138R) at 1:200 overnight at 4°C, followed by operating according to SP Kit(Rabbit) (sp-0023) instructions and DAB staining.