

**DEFB112 Polyclonal Antibody**  
**Purified Rabbit Polyclonal Antibody (Pab)**  
**Catalog # AP55481**

**Specification**

**DEFB112 Polyclonal Antibody - Product Information**

Application	IHC-P, IHC-F, IF, ICC, E
Primary Accession	<a href="#">Q30KQ8</a>
Host	Rabbit
Clonality	Polyclonal
Calculated MW	13 KDa
Physical State	Liquid
Immunogen	KLH conjugated synthetic peptide derived from human DEFB112
Epitope Specificity	41-113/113
Isotype	IgG
<b>Purity</b>	
affinity purified by Protein A	
Buffer	0.01M TBS (pH7.4) with 1% BSA, 0.02% Proclin300 and 50% Glycerol.
SUBCELLULAR LOCATION	Secreted.
SIMILARITY	Belongs to the beta-defensin family.
Important Note	This product as supplied is intended for research use only, not for use in human, therapeutic or diagnostic applications.

**Background Descriptions**

beta-defensins are small cationic peptides with broad-spectrum antimicrobial activity against a variety of enveloped viruses, fungi and bacteria. Produced in mucosal epithelia and neutrophils of several species, beta-defensins are developmentally regulated. The family of beta-defensin proteins share a common defensin-motif that is characterized by multiple cysteine residues and a highly conserved tertiary structure. Besides playing a significant role in host immune defense, many beta-defensins also are involved in sperm maturation and capacitation. beta-defensin 112 is a 113 amino acid secreted protein that has antibacterial activity.

**DEFB112 Polyclonal Antibody - Additional Information**

**Other Names**

Beta-defensin 112, Beta-defensin 12, DEFB-12, Defensin, beta 112, DEFB112, DEFB12

**Dilution**

<span class = "dilution\_IHC-P">IHC-P~~N/A</span><br \><span class = "dilution\_IHC-F">IHC-F~~N/A</span><br \><span class = "dilution\_IF">IF~~1:50~200</span><br \><span class = "dilution\_ICC">ICC~~N/A</span><br \><span class = "dilution\_E">E~~N/A</span>

**Storage**

Store at -20 °C for one year. Avoid repeated freeze/thaw cycles. When reconstituted in sterile pH 7.4 0.01M PBS or diluent of antibody the antibody is stable for at least two weeks at 2-4 °C.

## DEFB112 Polyclonal Antibody - Protein Information

**Name** DEFB112

**Synonyms** DEFB12

**Function**

Has antibacterial activity.

**Cellular Location**

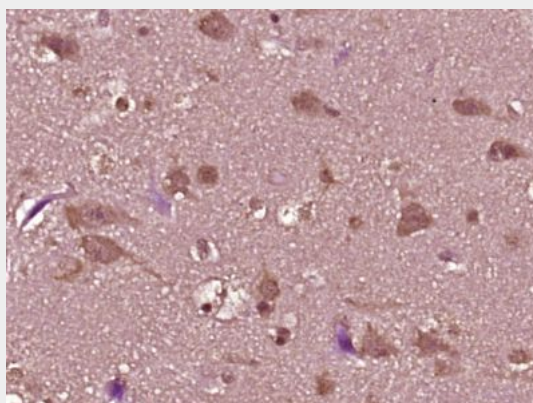
Secreted.

## DEFB112 Polyclonal Antibody - Protocols

Provided below are standard protocols that you may find useful for product applications.

- [Western Blot](#)
- [Blocking Peptides](#)
- [Dot Blot](#)
- [Immunohistochemistry](#)
- [Immunofluorescence](#)
- [Immunoprecipitation](#)
- [Flow Cytometry](#)
- [Cell Culture](#)

## DEFB112 Polyclonal Antibody - Images



Paraformaldehyde-fixed, paraffin embedded (Human glioma); Antigen retrieval by boiling in sodium citrate buffer (pH6.0) for 15min; Block endogenous peroxidase by 3% hydrogen peroxide for 20 minutes; Blocking buffer (normal goat serum) at 37°C for 30min; Antibody incubation with (DEFB112) Polyclonal Antibody, Unconjugated (bs-14245R) at 1:400 overnight at 4°C, followed by operating according to SP Kit(Rabbit) (sp-0023) instructions and DAB staining.