

SRD5A2 Antibody (Center)
Affinity Purified Rabbit Polyclonal Antibody (Pab)
Catalog # AP5552c**Specification**

SRD5A2 Antibody (Center) - Product Information

Application	WB,E
Primary Accession	P31213
Other Accession	NP_000339.2
Reactivity	Human, Mouse
Host	Rabbit
Clonality	Polyclonal
Isotype	Rabbit IgG
Antigen Region	153-182

SRD5A2 Antibody (Center) - Additional Information**Gene ID** 6716**Other Names**

3-oxo-5-alpha-steroid 4-dehydrogenase 2, 5 alpha-SR2, SR type 2, Steroid 5-alpha-reductase 2, S5AR 2, Type II 5-alpha reductase, SRD5A2

Target/Specificity

This SRD5A2 antibody is generated from rabbits immunized with a KLH conjugated synthetic peptide between 153-182 amino acids from the Central region of human SRD5A2.

Dilution

WB~~1:1000

Format

Purified polyclonal antibody supplied in PBS with 0.09% (W/V) sodium azide. This antibody is purified through a protein A column, followed by peptide affinity purification.

Storage

Maintain refrigerated at 2-8°C for up to 2 weeks. For long term storage store at -20°C in small aliquots to prevent freeze-thaw cycles.

Precautions

SRD5A2 Antibody (Center) is for research use only and not for use in diagnostic or therapeutic procedures.

SRD5A2 Antibody (Center) - Protein Information**Name** SRD5A2

Function Converts testosterone (T) into 5-alpha-dihydrotestosterone (DHT) and progesterone or corticosterone into their corresponding 5- alpha-3-oxosteroids. It plays a central role in sexual

differentiation and androgen physiology.

Cellular Location

Microsome membrane; Multi-pass membrane protein. Endoplasmic reticulum membrane; Multi-pass membrane protein

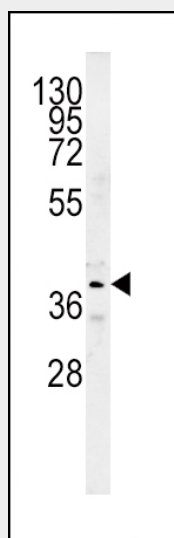
Tissue Location

Expressed in high levels in the prostate and many other androgen-sensitive tissues

SRD5A2 Antibody (Center) - Protocols

Provided below are standard protocols that you may find useful for product applications.

- [Western Blot](#)
- [Blocking Peptides](#)
- [Dot Blot](#)
- [Immunohistochemistry](#)
- [Immunofluorescence](#)
- [Immunoprecipitation](#)
- [Flow Cytometry](#)
- [Cell Culture](#)

SRD5A2 Antibody (Center) - Images

SRD5A2 Antibody (Center) (Cat. #AP5552c) western blot analysis in mouse kidney tissue lysates (15ug/lane). This demonstrates the SRD5A2 antibody detected SRD5A2 protein (arrow).

SRD5A2 Antibody (Center) - Background

This gene encodes a microsomal protein expressed at high levels in androgen-sensitive tissues such as the prostate. The encoded protein is active at acidic pH and is sensitive to the 4-azasteroid inhibitor finasteride. Deficiencies in this gene can result in male pseudohermaphroditism, specifically pseudovaginal perineoscrotal hypospadias (PPSH).

SRD5A2 Antibody (Center) - References

Thigpen, A.E., et al. N. Engl. J. Med. 327(17):1216-1219(1992)
Thigpen, A.E., et al. J. Clin. Invest. 90(3):799-809(1992)
Labrie, F., et al. Endocrinology 131(3):1571-1573(1992)
Andersson, S., et al. Nature 354(6349):159-161(1991)