

DNA Polymerase epsilon Polyclonal Antibody
Purified Rabbit Polyclonal Antibody (Pab)
Catalog # AP55535**Specification****DNA Polymerase epsilon Polyclonal Antibody - Product Information**

Application	WB, IHC-P, IHC-F, IF, ICC, E
Primary Accession	Q9NRF9
Reactivity	Rat, Pig, Dog, Bovine
Host	Rabbit
Clonality	Polyclonal
Calculated MW	16 kDa
Physical State	Liquid
Immunogen	KLH conjugated synthetic peptide derived from human DNA Polymerase epsilon 51-147/147
Epitope Specificity	IgG
Isotype	
Purity	
affinity purified by Protein A	
Buffer	0.01M TBS (pH7.4) with 1% BSA, 0.02% Proclin300 and 50% Glycerol.
SUBCELLULAR LOCATION	Nucleus.
Important Note	This product as supplied is intended for research use only, not for use in human, therapeutic or diagnostic applications.

Background Descriptions

OLE3 is a histone-fold protein that interacts with other histone-fold proteins to bind DNA in a sequence-independent manner. These histone-fold protein dimers combine within larger enzymatic complexes for DNA transcription, replication, and packaging.[supplied by OMIM, Apr 2004]

DNA Polymerase epsilon Polyclonal Antibody - Additional Information

Gene ID 54107

Other Names

DNA polymerase epsilon subunit 3, Arsenic-transactivated protein, AsTP, Chromatin accessibility complex 17 kDa protein, CHRAC-17, HuCHRAC17, DNA polymerase II subunit 3, DNA polymerase epsilon subunit p17, POLE3, CHRAC17

Target/Specificity

Expressed in all tissues tested, including, heart, brain, placenta, lung, liver, skeletal muscle, kidney and pancreas.

Dilution

WB~~1:1000<br \>IHC-P~~N/A<br \>IHC-F~~N/A<br \><span class

=[dilution_IF](#)>IF~~1:50~200<br \>ICC~~N/A<br \>E~~N/A

Format

0.01M TBS(pH7.4), 0.09% (W/V) sodium azide and 50% Glyce

Storage

Store at -20 °C for one year. Avoid repeated freeze/thaw cycles. When reconstituted in sterile pH 7.4 0.01M PBS or diluent of antibody the antibody is stable for at least two weeks at 2-4 °C.

DNA Polymerase epsilon Polyclonal Antibody - Protein Information

Name POLE3

Synonyms CHRAC17

Function

Accessory component of the DNA polymerase epsilon complex (PubMed:10801849). Participates in DNA repair and in chromosomal DNA replication (By similarity). Forms a complex with CHRAC1 and binds naked DNA, which is then incorporated into chromatin, aided by the nucleosome-remodeling activity of ISWI/SNF2H and ACF1 (PubMed:10801849). Does not enhance nucleosome sliding activity of the ACF-5 ISWI chromatin remodeling complex (PubMed:14759371).

Cellular Location

Nucleus.

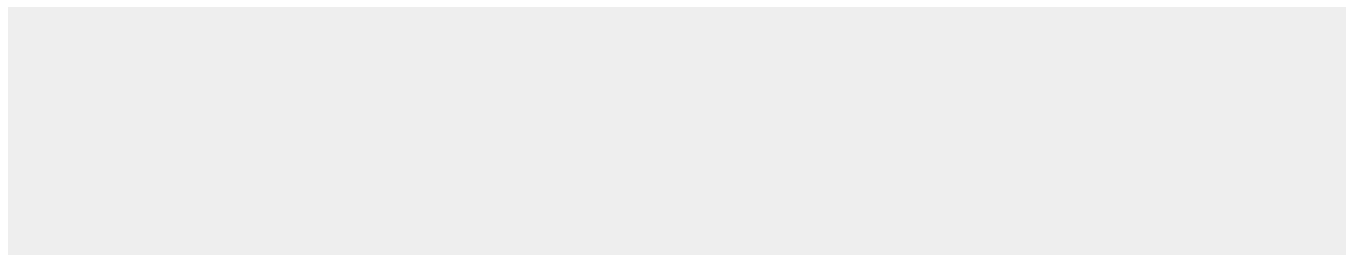
Tissue Location

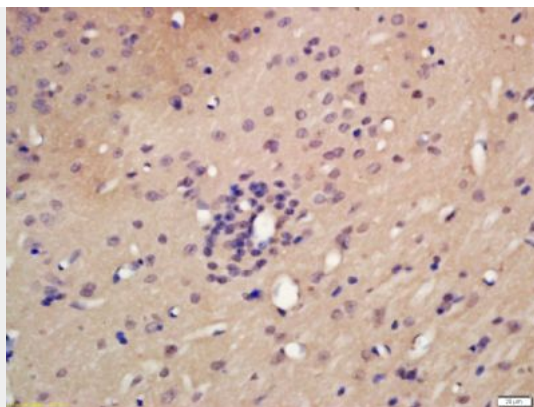
Expressed in heart, brain, placenta, lung, liver, skeletal muscle, kidney and pancreas.

DNA Polymerase epsilon Polyclonal Antibody - Protocols

Provided below are standard protocols that you may find useful for product applications.

- [Western Blot](#)
- [Blocking Peptides](#)
- [Dot Blot](#)
- [Immunohistochemistry](#)
- [Immunofluorescence](#)
- [Immunoprecipitation](#)
- [Flow Cytometry](#)
- [Cell Culture](#)

DNA Polymerase epsilon Polyclonal Antibody - Images



Tissue/cell: rat brain tissue; 4% Paraformaldehyde-fixed and paraffin-embedded;

Antigen retrieval: citrate buffer (0.01M, pH 6.0), Boiling bathing for 15min; Block endogenous peroxidase by 3% Hydrogen peroxide for 30min; Blocking buffer (normal goat serum,C-0005) at 37°C for 20 min;

Incubation: Anti-DNA Polymerase epsilon Polyclonal Antibody, Unconjugated(bs-14355R) 1:200, overnight at 4°C, followed by conjugation to the secondary antibody(SP-0023) and DAB(C-0010) staining