

**DPM1 Polyclonal Antibody**  
**Purified Rabbit Polyclonal Antibody (Pab)**  
**Catalog # AP55565****Specification**

---

**DPM1 Polyclonal Antibody - Product Information**

Application	IHC-P
Primary Accession	<a href="#">O60762</a>
Reactivity	Rat, Pig, Dog, Bovine
Host	Rabbit
Clonality	Polyclonal
Calculated MW	29634

**DPM1 Polyclonal Antibody - Additional Information****Gene ID** 8813**Other Names**

Dolichol-phosphate mannosyltransferase subunit 1, 2.4.1.83, Dolichol-phosphate mannose synthase subunit 1, DPM synthase subunit 1, Dolichyl-phosphate beta-D-mannosyltransferase subunit 1, Mannose-P-dolichol synthase subunit 1, MPD synthase subunit 1, DPM1

**Format**

0.01M TBS(pH7.4), 0.09% (W/V) sodium azide and 50% Glyce

**Storage**

Store at -20 °C for one year. Avoid repeated freeze/thaw cycles. When reconstituted in sterile pH 7.4 0.01M PBS or diluent of antibody the antibody is stable for at least two weeks at 2-4 °C.

**DPM1 Polyclonal Antibody - Protein Information****Name** DPM1**Function**

Transfers mannose from GDP-mannose to dolichol monophosphate to form dolichol phosphate mannose (Dol-P-Man) which is the mannosyl donor in pathways leading to N-glycosylation, glycosyl phosphatidylinositol membrane anchoring, and O-mannosylation of proteins; catalytic subunit of the dolichol-phosphate mannose (DPM) synthase complex.

**Cellular Location**

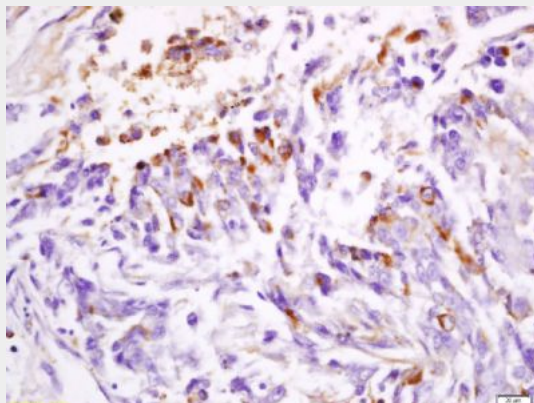
Endoplasmic reticulum

**DPM1 Polyclonal Antibody - Protocols**

Provided below are standard protocols that you may find useful for product applications.

- [Western Blot](#)
- [Blocking Peptides](#)
- [Dot Blot](#)
- [Immunohistochemistry](#)
- [Immunofluorescence](#)
- [Immunoprecipitation](#)
- [Flow Cytometry](#)
- [Cell Culture](#)

#### **DPM1 Polyclonal Antibody - Images**



Tissue/cell: human lung carcinoma; 4% Paraformaldehyde-fixed and paraffin-embedded;

Antigen retrieval: citrate buffer ( 0.01M, pH 6.0 ), Boiling bathing for 15min; Block endogenous peroxidase by 3% Hydrogen peroxide for 30min; Blocking buffer (normal goat serum,C-0005) at 37°C for 20 min;

Incubation: Anti-DPM1 Polyclonal Antibody, Unconjugated(bs-14419R) 1:200, overnight at 4°C, followed by conjugation to the secondary antibody(SP-0023) and DAB(C-0010) staining