

**EFHD2 Polyclonal Antibody**  
**Purified Rabbit Polyclonal Antibody (Pab)**  
**Catalog # AP55607****Specification**

---

**EFHD2 Polyclonal Antibody - Product Information**

Application	WB, IHC-P, IHC-F, IF, ICC, E
Primary Accession	<a href="#">Q96C19</a>
Reactivity	Rat, Pig, Bovine
Host	Rabbit
Clonality	Polyclonal
Calculated MW	27 KDa
Physical State	Liquid
Immunogen	KLH conjugated synthetic peptide derived from human EFHD2
Epitope Specificity	51-150/240
Isotype	IgG
<b>Purity</b>	
affinity purified by Protein A	
Buffer	0.01M TBS (pH7.4) with 1% BSA, 0.02% Proclin300 and 50% Glycerol.
SUBCELLULAR LOCATION	Membrane raft. In immature B-cell line WEHI231.
SIMILARITY	Contains 2 EF-hand domains.
Important Note	This product as supplied is intended for research use only, not for use in human, therapeutic or diagnostic applications.

**Background Descriptions**

EFHD2 is a 240 amino acid protein that regulates spontaneous apoptosis through the regulation of Bcl-xS abundance. Localized to membrane raft, Swiprosin-1 is expressed in lymphocytes and contains two EF-hand domains. The gene encoding Swiprosin-1 maps to human chromosome 1, which spans 260 million base pairs, contains over 3,000 genes and comprises nearly 8% of the human genome. Chromosome 1 houses a large number of disease-associated genes, including those that are involved in familial adenomatous polyposis, Stickler syndrome, Parkinson's disease, Gaucher disease, schizophrenia and Usher syndrome. Aberrations in chromosome 1 are found in a variety of cancers, including head and neck cancer, malignant melanoma and multiple myeloma.

**EFHD2 Polyclonal Antibody - Additional Information****Gene ID** 79180**Other Names**

EF-hand domain-containing protein D2, Swiprosin-1, EFHD2, SWS1

**Target/Specificity**

Found in lymphocytes; preferentially expressed in CD8+ cells.

**Dilution**

<span class = "dilution\_WB">WB~~1:1000</span><br \><span class = "dilution\_IHC-P">IHC-P~~N/A</span><br \><span class = "dilution\_IHC-F">IHC-F~~N/A</span><br \><span class = "dilution\_IF">IF~~1:50~200</span><br \><span class = "dilution\_ICC">ICC~~N/A</span><br \><span class = "dilution\_E">E~~N/A</span>

**Storage**

Store at -20 °C for one year. Avoid repeated freeze/thaw cycles. When reconstituted in sterile pH 7.4 0.01M PBS or diluent of antibody the antibody is stable for at least two weeks at 2-4 °C.

**EFHD2 Polyclonal Antibody - Protein Information**

**Name** EFHD2

**Synonyms** SWS1

**Function**

May regulate B-cell receptor (BCR)-induced immature and primary B-cell apoptosis. Plays a role as negative regulator of the canonical NF-kappa-B-activating branch. Controls spontaneous apoptosis through the regulation of BCL2L1 abundance.

**Cellular Location**

Membrane raft. Note=In a mouse immature B-cell line WEHI-231.

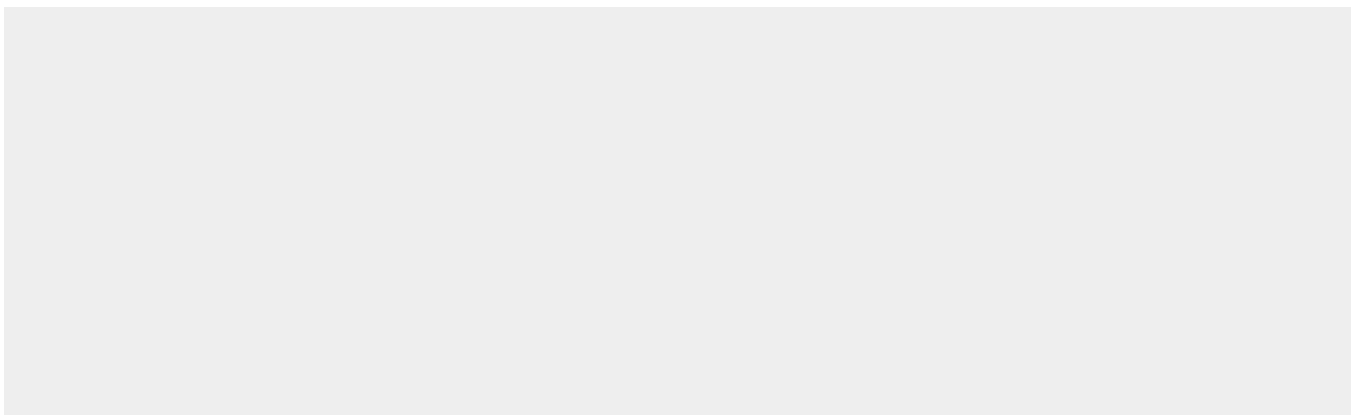
**Tissue Location**

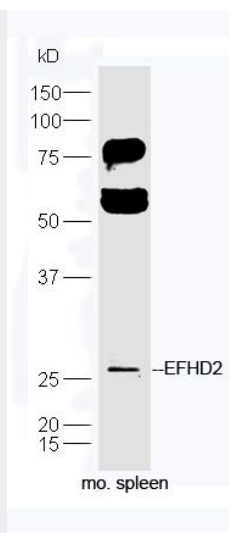
Found in lymphocytes; preferentially expressed in CD8+ cells.

**EFHD2 Polyclonal Antibody - Protocols**

Provided below are standard protocols that you may find useful for product applications.

- [Western Blot](#)
- [Blocking Peptides](#)
- [Dot Blot](#)
- [Immunohistochemistry](#)
- [Immunofluorescence](#)
- [Immunoprecipitation](#)
- [Flow Cytometry](#)
- [Cell Culture](#)

**EFHD2 Polyclonal Antibody - Images**



Protein: spleen(mouse) lysate at 40ug;  
Primary: rabbit Anti-EFHD2 (bs-14520R) at 1:300;  
Secondary: HRP conjugated Goat-Anti-rabbit IgG(bs-0295G-HRP) at 1: 5000;  
Predicted band size: 27 kD  
Observed band size: 27 kD