

EHP1 Polyclonal Antibody
Purified Rabbit Polyclonal Antibody (Pab)
Catalog # AP55610**Specification****EHP1 Polyclonal Antibody - Product Information**

Application	WB, IHC-P, IHC-F, IF, ICC, E
Primary Accession	Q8NDI1
Reactivity	Rat, Pig, Dog, Bovine
Host	Rabbit
Clonality	Polyclonal
Calculated MW	140 KDa
Physical State	Liquid
Immunogen	KLH conjugated synthetic peptide derived from human EHP1
Epitope Specificity	21-120/1231
Isotype	IgG
Purity	
affinity purified by Protein A	
Buffer	0.01M TBS (pH7.4) with 1% BSA, 0.02% Proclin300 and 50% Glycerol.
SUBCELLULAR LOCATION	Cell Membrane and Cytoplasmic
SIMILARITY	Contains 1 CH (calponin-homology) domain.
SUBUNIT	Interacts with EHD2.
DISEASE	Prostate cancer, hereditary, 12 (HPC12) [MIM:611868]: A condition associated with familial predisposition to cancer of the prostate. Most prostate cancers are adenocarcinomas that develop in the acini of the prostatic ducts. Other rare histopathologic types of prostate cancer that occur in approximately 5% of patients include small cell carcinoma, mucinous carcinoma, prostatic ductal carcinoma, transitional cell carcinoma, squamous cell carcinoma, basal cell carcinoma, adenoid cystic carcinoma (basaloid), signet-ring cell carcinoma and neuroendocrine carcinoma. Note=Disease susceptibility is associated with variations affecting the gene represented in this entry.
Important Note	This product as supplied is intended for research use only, not for use in human, therapeutic or diagnostic applications.

Background Descriptions

This gene encodes an Eps15 homology domain binding protein. The encoded protein may play a role in endocytic trafficking. A single nucleotide polymorphism in this gene is associated with an aggressive form of prostate cancer. Alternate splicing results in multiple transcript variants. [provided by RefSeq, Feb 2010]

EHBP1 Polyclonal Antibody - Additional Information

Gene ID 23301

Other Names

EH domain-binding protein 1, EHBP1, KIAA0903, NACSIN

Dilution

WB~1:1000
IHC-P~N/A
IHC-F~N/A
IF~1:50~200
ICC~N/A
E~N/A

Format

0.01M TBS(pH7.4), 0.09% (W/V) sodium azide and 50% Glycerol

Storage

Store at -20 °C for one year. Avoid repeated freeze/thaw cycles. When reconstituted in sterile pH 7.4 0.01M PBS or diluent of antibody the antibody is stable for at least two weeks at 2-4 °C.

EHBP1 Polyclonal Antibody - Protein Information

Name EHBP1

Synonyms KIAA0903, NACSIN

Function

May play a role in actin reorganization. Links clathrin- mediated endocytosis to the actin cytoskeleton. May act as Rab effector protein and play a role in vesicle trafficking (PubMed:14676205, PubMed:27552051). Required for perinuclear sorting and insulin- regulated recycling of SLC2A4/GLUT4 in adipocytes (By similarity).

Cellular Location

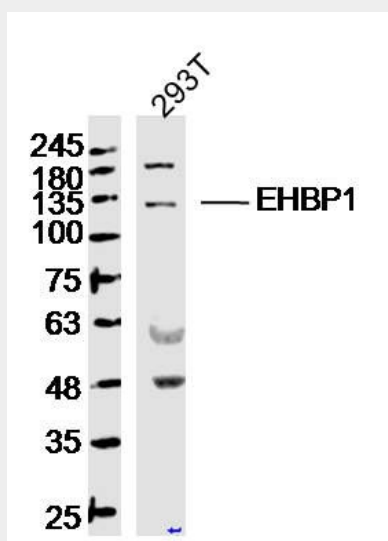
Cytoplasm. Membrane. Endosome Note=Mostly found in cytosol and plasma membrane

EHBP1 Polyclonal Antibody - Protocols

Provided below are standard protocols that you may find useful for product applications.

- [Western Blot](#)
- [Blocking Peptides](#)
- [Dot Blot](#)
- [Immunohistochemistry](#)
- [Immunofluorescence](#)
- [Immunoprecipitation](#)
- [Flow Cytometry](#)
- [Cell Culture](#)

EHBP1 Polyclonal Antibody - Images



Sample:

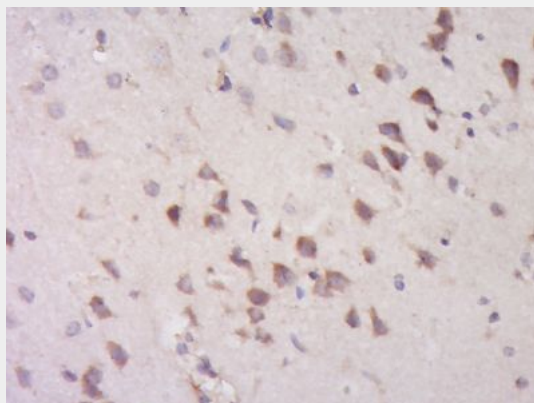
293T(Human) Cell Lysate at 40 ug

Primary: Anti-EHP1 (bs-14523R) at 1/300 dilution

Secondary: IRDye800CW Goat Anti-Rabbit IgG at 1/20000 dilution

Predicted band size: 140 kD

Observed band size: 134 kD



Paraformaldehyde-fixed, paraffin embedded (Rat brain); Antigen retrieval by boiling in sodium citrate buffer (pH6.0) for 15min; Block endogenous peroxidase by 3% hydrogen peroxide for 20 minutes; Blocking buffer (normal goat serum) at 37°C for 30min; Antibody incubation with (EHP1) Polyclonal Antibody, Unconjugated (bs-14523R) at 1:400 overnight at 4°C, followed by operating according to SP Kit(Rabbit) (sp-0023) instructions and DAB staining.