

**EMR3 Polyclonal Antibody**  
**Purified Rabbit Polyclonal Antibody (Pab)**  
**Catalog # AP55635****Specification**

---

**EMR3 Polyclonal Antibody - Product Information**

Application	WB, IHC-P, IHC-F, IF, ICC, E
Primary Accession	<a href="#">Q9BY15</a>
Host	Rabbit
Clonality	Polyclonal
Calculated MW	70 KDa
Physical State	Liquid
Immunogen	KLH conjugated synthetic peptide derived from human EMR3
Epitope Specificity	31-130/652
Isotype	IgG
<b>Purity</b>	
affinity purified by Protein A	
Buffer	0.01M TBS (pH7.4) with 1% BSA, 0.02% Proclin300 and 50% Glycerol.
SUBCELLULAR LOCATION	Cell membrane; Multi-pass membrane protein. EMR3 subunit alpha: Secreted, extracellular space. Note: A soluble form is also detected.
SIMILARITY	Belongs to the G-protein coupled receptor 2 family. LN-TM7 subfamily. Contains 2 EGF-like domains. Contains 1 GPS domain.
SUBUNIT	Forms a heterodimer, consisting of a large extracellular region (alpha subunit) non-covalently linked to a seven-transmembrane moiety (beta subunit) (By similarity).
Post-translational modifications	Proteolytically cleaved into 2 subunits, an extracellular alpha subunit and a seven-transmembrane subunit (By similarity).
Important Note	This product as supplied is intended for research use only, not for use in human, therapeutic or diagnostic applications.

**Background Descriptions**

This gene encodes a member of the class B seven-span transmembrane (TM7) receptor family expressed predominantly by cells of the immune system. Family members are characterized by an extended extracellular region with a variable number of N-terminal epidermal growth factor (EGF)-like domains coupled to a TM7 domain via a mucin-like spacer domain. This gene is closely linked to the gene encoding egf-like molecule containing mucin-like hormone receptor 2 on chromosome 19. This protein may play a role in myeloid-myeloid interactions during immune and inflammatory responses. [provided by RefSeq, Jul 2008]

**EMR3 Polyclonal Antibody - Additional Information**

**Gene ID 84658****Other Names**

Adhesion G protein-coupled receptor E3, EGF-like module receptor 3, EGF-like module-containing mucin-like hormone receptor-like 3, ADGRE3 ([http://www.genenames.org/cgi-bin/gene\\_symbol\\_report?hgnc\\_id=23647](http://www.genenames.org/cgi-bin/gene_symbol_report?hgnc_id=23647)), EMR3

**Target/Specificity**

Displays a predominantly leukocyte-restricted expression, with highest levels in neutrophils, monocytes and macrophages.

**Dilution**

WB~~1:1000  
IHC-P~~N/A  
IHC-F~~N/A  
IF~~1:50~200  
ICC~~N/A  
E~~N/A

**Format**

0.01M TBS(pH7.4), 0.09% (W/V) sodium azide and 50% Glyce

**Storage**

Store at -20 °C for one year. Avoid repeated freeze/thaw cycles. When reconstituted in sterile pH 7.4 0.01M PBS or diluent of antibody the antibody is stable for at least two weeks at 2-4 °C.

**EMR3 Polyclonal Antibody - Protein Information**

**Name** ADGRE3 ([HGNC:23647](#))

**Synonyms** EMR3

**Function**

Orphan receptor that may play a role myeloid-myeloid interactions during immune and inflammatory responses. A ligand for the soluble form of this receptor is present at the surface of monocytes- derived macrophages and activated neutrophils.

**Cellular Location**

Cell membrane; Multi-pass membrane protein

**Tissue Location**

Displays a predominantly leukocyte-restricted expression, with highest levels in neutrophils, monocytes and macrophages.

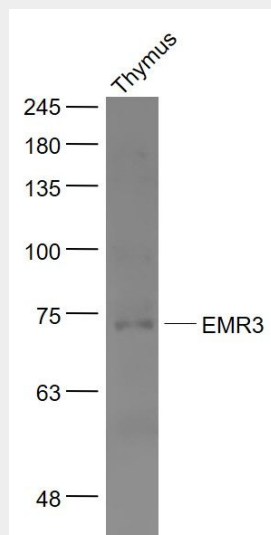
**EMR3 Polyclonal Antibody - Protocols**

Provided below are standard protocols that you may find useful for product applications.

- [Western Blot](#)
- [Blocking Peptides](#)
- [Dot Blot](#)
- [Immunohistochemistry](#)

- [Immunofluorescence](#)
- [Immunoprecipitation](#)
- [Flow Cytometry](#)
- [Cell Culture](#)

### EMR3 Polyclonal Antibody - Images



**Sample:**

Thymus (Mouse) Lysate at 40 ug

Primary: Anti- EMR3 (bs-14588R) at 1/1000 dilution

Secondary: IRDye800CW Goat Anti-Rabbit IgG at 1/20000 dilution

Predicted band size: 70 kD

Observed band size: 70 kD