

ENDOD1 Polyclonal Antibody
Purified Rabbit Polyclonal Antibody (Pab)
Catalog # AP55636**Specification**

ENDOD1 Polyclonal Antibody - Product Information

Application	WB, IHC-P, IHC-F, IF, ICC, E
Primary Accession	O94919
Reactivity	Rat
Host	Rabbit
Clonality	Polyclonal
Calculated MW	53 KDa
Physical State	Liquid
Immunogen	KLH conjugated synthetic peptide derived from human ENDOD1
Epitope Specificity	251-350/500
Isotype	IgG
Purity	
affinity purified by Protein A	
Buffer	0.01M TBS (pH7.4) with 1% BSA, 0.02% Proclin300 and 50% Glycerol.
SUBCELLULAR LOCATION	Secreted.
SIMILARITY	Belongs to the DNA/RNA non-specific endonuclease family.
Important Note	This product as supplied is intended for research use only, not for use in human, therapeutic or diagnostic applications.

Background Descriptions

ENDOD1 is a 500 amino acid secreted protein that belongs to the DNA/RNA non-specific endonuclease family. ENDOD1 is thought to act as a DNase and an RNase. The gene that encodes ENDOD1 maps to human chromosome 11, which comprises approximately 4% of human genomic DNA and is considered a gene and disease association dense chromosome. The chromosome 11 encoded Atm gene is important for regulation of cell cycle arrest and apoptosis following double strand DNA breaks. Atm mutation leads to the disorder known as ataxia-telangiectasia. The blood disorders Sickle cell anemia and thalassemia are caused by HBB gene mutations, while Wilms' tumors, WAGR syndrome and Denys-Drash syndrome are associated with mutations of the WT1 gene. Jervell and Lange-Nielsen syndrome, Jacobsen syndrome, Niemann-Pick disease, hereditary angioedema and Smith-Lemli-Opitz syndrome are also associated with defects in chromosome 11-encoded genes.

ENDOD1 Polyclonal Antibody - Additional Information**Gene ID** 23052**Other Names**

Endonuclease domain-containing 1 protein, 3.1.30.-, ENDOD1, KIAA0830

Dilution

WB~~1:1000<br \>IHC-P~~N/A<br \>IHC-F~~N/A<br \>IF~~1:50~200<br \>ICC~~N/A<br \>E~~N/A

Storage

Store at -20 °C for one year. Avoid repeated freeze/thaw cycles. When reconstituted in sterile pH 7.4 0.01M PBS or diluent of antibody the antibody is stable for at least two weeks at 2-4 °C.

ENDOD1 Polyclonal Antibody - Protein Information

Name ENDOD1

Synonyms KIAA0830

Function

May act as a DNase and a RNase. Plays a role in the modulation of innate immune signaling through the cGAS-STING pathway by interacting with RNF26.

Cellular Location

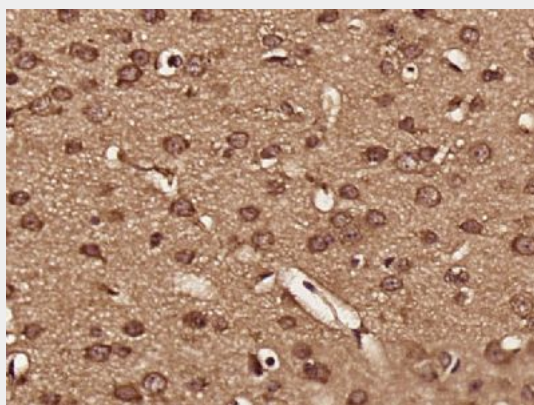
Secreted.

ENDOD1 Polyclonal Antibody - Protocols

Provided below are standard protocols that you may find useful for product applications.

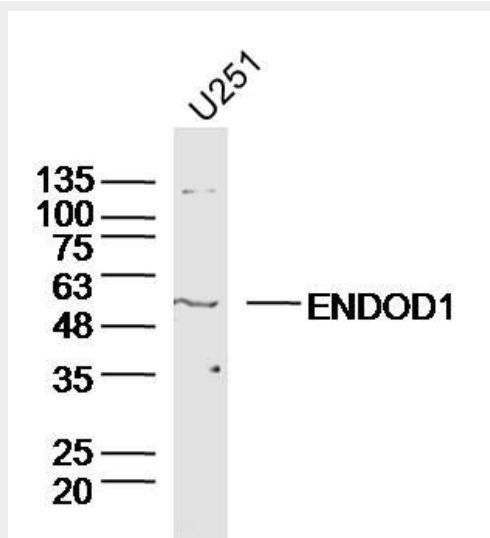
- [Western Blot](#)
- [Blocking Peptides](#)
- [Dot Blot](#)
- [Immunohistochemistry](#)
- [Immunofluorescence](#)
- [Immunoprecipitation](#)
- [Flow Cytometry](#)
- [Cell Culture](#)

ENDOD1 Polyclonal Antibody - Images



Paraformaldehyde-fixed, paraffin embedded (mouse brain tissue); Antigen retrieval by boiling in

sodium citrate buffer (pH6.0) for 15min; Block endogenous peroxidase by 3% hydrogen peroxide for 20 minutes; Blocking buffer (normal goat serum) at 37°C for 30min; Antibody incubation with (ENDOD1) Polyclonal Antibody, Unconjugated (bs-14591R) at 1:400 overnight at 4°C, followed by operating according to SP Kit(Rabbit) (sp-0023) instructions and DAB staining.



Sample: U251 Cell (Human) Lysate at 40 ug
Primary: Anti-ENDOD1(bs-14591R) at 1/300 dilution
Secondary: IRDye800CW Goat Anti-Rabbit IgG at 1/20000 dilution
Predicted band size: 53kD
Observed band size: 53kD