

ENO4 Polyclonal Antibody

Purified Rabbit Polyclonal Antibody (Pab)

Catalog # AP55638

Specification

ENO4 Polyclonal Antibody - Product Information

Application	IHC-P, IHC-F, IF, ICC, E
Primary Accession	A6NNW6
Reactivity	Rat, Bovine
Host	Rabbit
Clonality	Polyclonal
Calculated MW	69 KDa
Physical State	Liquid
Immunogen	KLH conjugated synthetic peptide derived from human ENO4
Epitope Specificity	401-500/628
Isotype	IgG
Purity	
affinity purified by Protein A	
Buffer	0.01M TBS (pH7.4) with 1% BSA, 0.02% Proclin300 and 50% Glycerol.
SIMILARITY	Belongs to the enolase family.
Important Note	This product as supplied is intended for research use only, not for use in human, therapeutic or diagnostic applications.

Background Descriptions

Enolases have been characterized as highly conserved cytoplasmic glycolytic enzymes that may be involved in differentiation. Three isoenzymes have been identified, alpha enolase, beta enolase and gamma enolase. alpha enolase expression has been detected on most tissues, whereas betaenolase is expressed predominantly in muscle tissue and gamma enolase is detected only in nervous tissue. These isoforms exist as both homodimers and heterodimers, and they play a role in converting phosphoglyceric acid to phosphoenolpyruvic acid in the glycolytic pathway. ENO4 (Enolase-like protein ENO4), also known as C10orf134, is a 628 amino acid protein that belongs to the Enolase family. ENO4 is expressed as two isoforms produced by alternative splicing and is encoded by a gene mapping to human chromosome 10q25.3 and murine chromosome 19 D3.

ENO4 Polyclonal Antibody - Additional Information

Gene ID 387712

Other Names

Enolase 4, 4.2.1.11, 2-phospho-D-glycerate hydro-lyase, ENO4 (http://www.genenames.org/cgi-bin/gene_symbol_report?hgnc_id=31670) target="_blank">HGNC:31670), C10orf134

Dilution

IHC-P~~N/A<br \>IHC-F~~N/A<br \><span class =

="dilution_IF">IF~~1:50~200<br \>ICC~~N/A<br \>E~~N/A

Storage

Store at -20 °C for one year. Avoid repeated freeze/thaw cycles. When reconstituted in sterile pH 7.4 0.01M PBS or diluent of antibody the antibody is stable for at least two weeks at 2-4 °C.

ENO4 Polyclonal Antibody - Protein Information

Name ENO4 ([HGNC:31670](#))

Synonyms C10orf134

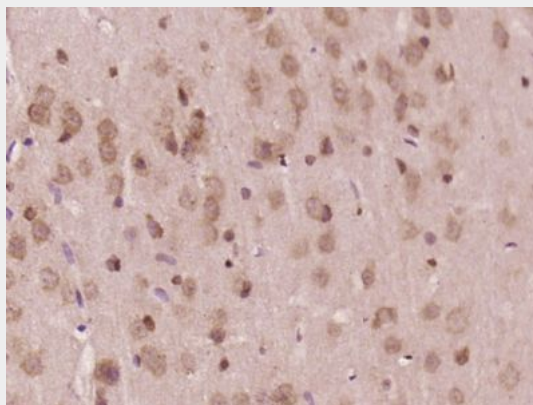
Function

May be required for sperm motility and function.

ENO4 Polyclonal Antibody - Protocols

Provided below are standard protocols that you may find useful for product applications.

- [Western Blot](#)
- [Blocking Peptides](#)
- [Dot Blot](#)
- [Immunohistochemistry](#)
- [Immunofluorescence](#)
- [Immunoprecipitation](#)
- [Flow Cytometry](#)
- [Cell Culture](#)

ENO4 Polyclonal Antibody - Images

Paraformaldehyde-fixed, paraffin embedded (Rat brain); Antigen retrieval by boiling in sodium citrate buffer (pH6.0) for 15min; Block endogenous peroxidase by 3% hydrogen peroxide for 20 minutes; Blocking buffer (normal goat serum) at 37°C for 30min; Antibody incubation with (ENO4) Polyclonal Antibody, Unconjugated (bs-14596R) at 1:400 overnight at 4°C, followed by operating according to SP Kit(Rabbit) (sp-0023) instructions and DAB staining.