

ENPP4 Polyclonal Antibody
Purified Rabbit Polyclonal Antibody (Pab)
Catalog # AP55640**Specification****ENPP4 Polyclonal Antibody - Product Information**

Application	WB, IHC-P, IHC-F, IF, ICC
Primary Accession	Q9Y6X5
Reactivity	Rat
Host	Rabbit
Clonality	Polyclonal
Calculated MW	52 KDa
Physical State	Liquid
Immunogen	KLH conjugated synthetic peptide derived from human ENPP4
Epitope Specificity	51-150/453
Isotype	IgG
Purity	
affinity purified by Protein A	
Buffer	0.01M TBS (pH7.4) with 1% BSA, 0.02% Proclin300 and 50% Glycerol.
SUBCELLULAR LOCATION	Cell membrane; Single-pass type I membrane protein.
SIMILARITY	Belongs to the nucleotide pyrophosphatase/phosphodiesterase family.
Important Note	This product as supplied is intended for research use only, not for use in human, therapeutic or diagnostic applications.

Background Descriptions

ENPP4 is a 453 amino acid single-pass type I membrane protein that belongs to the nucleotide pyrophosphatase/phosphodiesterase family. The gene that encodes NPP4 consists of approximately 16,736 bases and maps to human chromosome 6p21.1. Making up nearly 6% of the human genome, chromosome 6 contains around 1,200 genes within 170 million base pairs of sequence. Deletion of a portion of the q arm of chromosome 6 is associated with early onset intestinal cancer suggesting the presence of a cancer susceptibility locus. Porphyria cutanea tarda is associated with chromosome 6 through the HFE gene, and Stickler syndrome, 21-hydroxylase deficiency and maple syrup urine disease are also associated with genes on chromosome 6. Notably, the PARK2 gene, which is associated with Parkinson's disease, and the genes encoding the major histocompatibility complex proteins are also located on chromosome 6. A bipolar disorder susceptibility locus has been identified on the q arm of chromosome 6.

ENPP4 Polyclonal Antibody - Additional Information**Gene ID** 22875**Other Names**

Bis(5'-adenosyl)-triphosphatase ENPP4, 3.6.1.29, AP3A hydrolase, AP3Aase, Ectonucleotide

pyrophosphatase/phosphodiesterase family member 4, E-NPP 4, NPP-4, ENPP4, KIAA0879, NPP4

Target/Specificity

Expressed on the surface of vascular endothelia.

Dilution

WB~~1:1000
IHC-P~~N/A
IHC-F~~N/A
IF~~1:50~200
ICC~~N/A

Storage

Store at -20 °C for one year. Avoid repeated freeze/thaw cycles. When reconstituted in sterile pH 7.4 0.01M PBS or diluent of antibody the antibody is stable for at least two weeks at 2-4 °C.

ENPP4 Polyclonal Antibody - Protein Information

Name ENPP4

Synonyms KIAA0879, NPP4

Function

Hydrolyzes extracellular Ap3A into AMP and ADP, and Ap4A into AMP and ATP. Ap3A and Ap4A are diadenosine polyphosphates thought to induce proliferation of vascular smooth muscle cells. Acts as a procoagulant, mediating platelet aggregation at the site of nascent thrombus via release of ADP from Ap3A and activation of ADP receptors.

Cellular Location

Cell membrane; Single-pass type I membrane protein

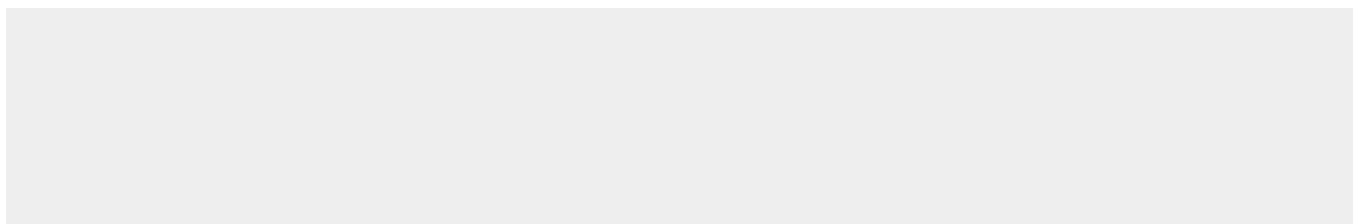
Tissue Location

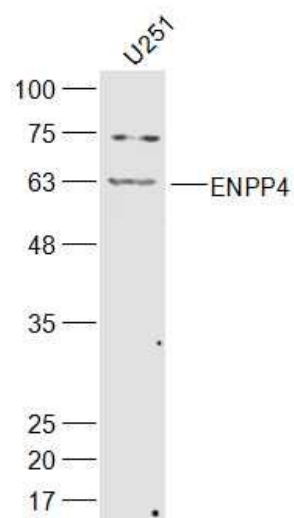
Expressed on the surface of vascular endothelia.

ENPP4 Polyclonal Antibody - Protocols

Provided below are standard protocols that you may find useful for product applications.

- [Western Blot](#)
- [Blocking Peptides](#)
- [Dot Blot](#)
- [Immunohistochemistry](#)
- [Immunofluorescence](#)
- [Immunoprecipitation](#)
- [Flow Cytometry](#)
- [Cell Culture](#)

ENPP4 Polyclonal Antibody - Images



Sample:

U251(Human) Cell Lysate at 30 ug

Primary: Anti-ENPP4 (bs-14599R) at 1/300 dilution

Secondary: IRDye800CW Goat Anti-Rabbit IgG at 1/20000 dilution

Predicted band size: 52 kD

Observed band size: 62 kD