

C1ORF151 Polyclonal Antibody
Purified Rabbit Polyclonal Antibody (Pab)
Catalog # AP55748**Specification**

C1ORF151 Polyclonal Antibody - Product Information

Application	WB, IHC-P, IHC-F, IF, ICC, E
Primary Accession	Q5TGZ0
Reactivity	Rat, Pig, Dog
Host	Rabbit
Clonality	Polyclonal
Calculated MW	8808

C1ORF151 Polyclonal Antibody - Additional Information**Gene ID** 440574**Other Names**

MICOS complex subunit MIC10, Mitochondrial inner membrane organizing system protein 1, MICOS10 (http://www.genenames.org/cgi-bin/gene_symbol_report?hgnc_id=32068)
target="_blank">HGNC:32068)

Dilution

WB~~1:1000<br \>IHC-P~~N/A<br \>IHC-F~~N/A<br \>IF~~1:50~200<br \>ICC~~N/A<br \>E~~N/A

Format

0.01M TBS(pH7.4), 0.09% (W/V) sodium azide and 50% Glyce

Storage

Store at -20 °C for one year. Avoid repeated freeze/thaw cycles. When reconstituted in sterile pH 7.4 0.01M PBS or diluent of antibody the antibody is stable for at least two weeks at 2-4 °C.

C1ORF151 Polyclonal Antibody - Protein Information**Name** MICOS10 ([HGNC:32068](#))**Function**

Component of the MICOS complex, a large protein complex of the mitochondrial inner membrane that plays crucial roles in the maintenance of crista junctions, inner membrane architecture, and formation of contact sites to the outer membrane.

Cellular Location

Mitochondrion inner membrane; Single-pass membrane protein. Note=The C-terminus is located in the intermembrane space (By similarity), while the location of the N- terminus has not been

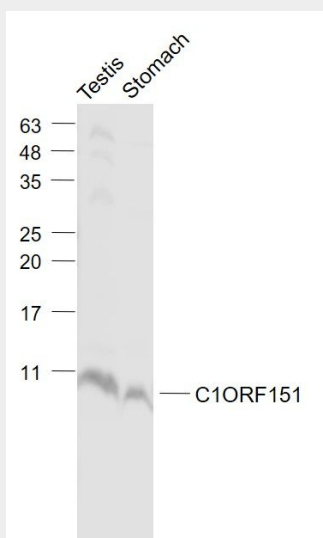
determined yet. As some programs predict the presence of 2 closely apposed membrane domains, it has been proposed that the protein may cross the membrane twice and that both termini may face the intermembrane space (PubMed:22114354). {ECO:0000250, ECO:0000269|PubMed:22114354}

C1ORF151 Polyclonal Antibody - Protocols

Provided below are standard protocols that you may find useful for product applications.

- [Western Blot](#)
- [Blocking Peptides](#)
- [Dot Blot](#)
- [Immunohistochemistry](#)
- [Immunofluorescence](#)
- [Immunoprecipitation](#)
- [Flow Cytometry](#)
- [Cell Culture](#)

C1ORF151 Polyclonal Antibody - Images



Sample:

Testis (Mouse) Lysate at 40 ug

Stomach (Mouse) Lysate at 40 ug

Primary: Anti- C1ORF151 (bs-15029R) at 1/1000 dilution

Secondary: IRDye800CW Goat Anti-Rabbit IgG at 1/20000 dilution

Predicted band size: 9 kD

Observed band size: 9 kD