

C1ORF190 Polyclonal Antibody
Purified Rabbit Polyclonal Antibody (Pab)
Catalog # AP55760

Specification

C1ORF190 Polyclonal Antibody - Product Information

Application	WB, IHC-P, IHC-F, IF, ICC
Primary Accession	O96LR2
Reactivity	Rat, Pig, Dog
Host	Rabbit
Clonality	Polyclonal
Calculated MW	26 KDa
Physical State	Liquid
Immunogen	KLH conjugated synthetic peptide derived from human C1ORF190
Epitope Specificity	51-150/239
Isotype	IgG
Purity	
affinity purified by Protein A	
Buffer	0.01M TBS (pH7.4) with 1% BSA, 0.02% Proclin300 and 50% Glycerol.
SUBCELLULAR LOCATION	Cytoplasm.
SIMILARITY	Contains 2 LRR (leucine-rich) repeats.
SUBUNIT	Forms a tripartite complex with CDC42BPA/CDC42BPB and MYO18A acting as an adapter connecting both. Its binding to CDC42BPA/CDC42BPB results in their activation by abolition of their negative autoregulation.
Important Note	This product as supplied is intended for research use only, not for use in human, therapeutic or diagnostic applications.

Background Descriptions

Chromosome 1 is the largest human chromosome spanning about 260 million base pairs and making up 8% of the human genome. There are about 3,000 genes on chromosome 1, and considering the great number of genes there are also a large number of diseases associated with chromosome 1. Notably, the rare aging disease Hutchinson-Gilford progeria is associated with the LMNA gene which encodes lamin A. When defective, the LMNA gene product can build up in the nucleus and cause characteristic nuclear blebs. The mechanism of rapidly enhanced aging is unclear and is a topic of continuing exploration. The MUTYH gene is located on chromosome 1 and is partially responsible for familial adenomatous polyposis. Stickler syndrome, Parkinsons, Gaucher disease and Usher syndrome are also associated with chromosome 1. A breakpoint has been identified in 1q which disrupts the DISC1 gene and is linked to schizophrenia. Aberrations in chromosome 1 are found in a variety of cancers including head and neck cancer, malignant melanoma and multiple myeloma. The C1orf190 gene product has been provisionally designated C1orf190 pending further characterization.

C1ORF190 Polyclonal Antibody - Additional Information

Gene ID 541468

Other Names

Leucine rich adaptor protein 1, Leucine repeat adapter protein 35A, LURAP1, C1orf190, LRAP35A, LRP35A

Dilution

WB~~1:1000<br \>IHC-P~~N/A<br \>IHC-F~~N/A<br \>IF~~1:50~200<br \>ICC~~N/A

Storage

Store at -20 °C for one year. Avoid repeated freeze/thaw cycles. When reconstituted in sterile pH 7.4 0.01M PBS or diluent of antibody the antibody is stable for at least two weeks at 2-4 °C.

C1ORF190 Polyclonal Antibody - Protein Information

Name LURAP1

Synonyms C1orf190, LRAP35A, LRP35A

Function

Acts as an activator of the canonical NF-kappa-B pathway and drive the production of pro-inflammatory cytokines. Promotes the antigen (Ag)-presenting and priming function of dendritic cells via the canonical NF-kappa-B pathway (PubMed:21048106). In concert with MYO18A and CDC42BPA/CDC42BPB, is involved in modulating lamellar actomyosin retrograde flow that is crucial to cell protrusion and migration. Activates CDC42BPA/CDC42BPB and targets it to actomyosin through its interaction with MYO18A, leading to MYL9/MLC2 phosphorylation and MYH9/MYH10-dependent actomyosin assembly in the lamella (By similarity).

Cellular Location

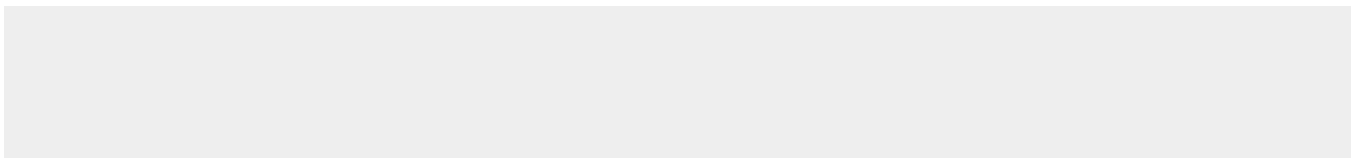
Cytoplasm.

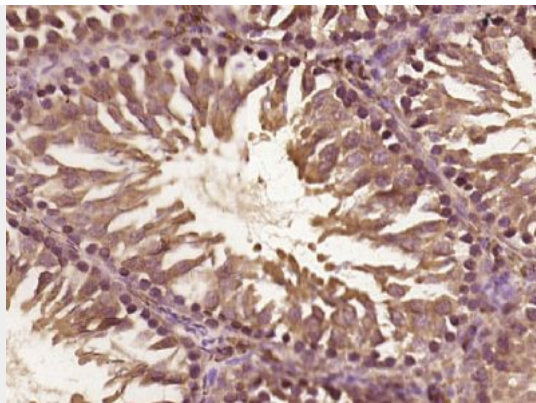
C1ORF190 Polyclonal Antibody - Protocols

Provided below are standard protocols that you may find useful for product applications.

- [Western Blot](#)
- [Blocking Peptides](#)
- [Dot Blot](#)
- [Immunohistochemistry](#)
- [Immunofluorescence](#)
- [Immunoprecipitation](#)
- [Flow Cytometry](#)
- [Cell Culture](#)

C1ORF190 Polyclonal Antibody - Images





Paraformaldehyde-fixed, paraffin embedded (mouse testis tissue); Antigen retrieval by boiling in sodium citrate buffer (pH6.0) for 15min; Block endogenous peroxidase by 3% hydrogen peroxide for 20 minutes; Blocking buffer (normal goat serum) at 37°C for 30min; Antibody incubation with (C1ORF190) Polyclonal Antibody, Unconjugated (bs-15049R) at 1:400 overnight at 4°C, followed by operating according to SP Kit(Rabbit) (sp-0023) instructions and DAB staining.