

**C1orf216 Polyclonal Antibody**  
**Purified Rabbit Polyclonal Antibody (Pab)**  
**Catalog # AP55765****Specification**

---

**C1orf216 Polyclonal Antibody - Product Information**

Application	WB, IHC-P, IHC-F, IF, ICC, E
Primary Accession	<a href="#">Q8TAB5</a>
Reactivity	Rat, Dog
Host	Rabbit
Clonality	Polyclonal
Calculated MW	25 KDa
Physical State	Liquid
Immunogen	KLH conjugated synthetic peptide derived from human C1orf216
Epitope Specificity	101-200/229
Isotype	IgG
<b>Purity</b>	
affinity purified by Protein A	
Buffer	0.01M TBS (pH7.4) with 1% BSA, 0.02% Proclin300 and 50% Glycerol.
SIMILARITY	Belongs to the UPF0500 family.
Important Note	This product as supplied is intended for research use only, not for use in human, therapeutic or diagnostic applications.

**Background Descriptions**

Chromosome 1 is the largest human chromosome spanning about 260 million base pairs and making up 8% of the human genome. There are about 3,000 genes on chromosome 1, and considering the great number of genes there are also a large number of diseases associated with chromosome 1. Notably, the rare aging disease Hutchinson-Gilford progeria is associated with the LMNA gene which encodes lamin A. When defective, the LMNA gene product can build up in the nucleus and cause characteristic nuclear blebs. The mechanism of rapidly enhanced aging is unclear and is a topic of continuing exploration. The MUTYH gene is located on chromosome 1 and is partially responsible for familial adenomatous polyposis. Stickler syndrome, Parkinsons, Gaucher disease and Usher syndrome are also associated with chromosome 1. A breakpoint has been identified in 1q which disrupts the DISC1 gene and is linked to schizophrenia. Aberrations in chromosome 1 are found in a variety of cancers including head and neck cancer, malignant melanoma and multiple myeloma. The C1orf216 gene product has been provisionally designated C1orf216 pending further characterization.

**C1orf216 Polyclonal Antibody - Additional Information****Gene ID** 127703**Other Names**

UPF0500 protein C1orf216, C1orf216

**Dilution**

<span class = "dilution\_WB">WB~~1:1000</span><br \><span class = "dilution\_IHC-P">IHC-P~~N/A</span><br \><span class = "dilution\_IHC-F">IHC-F~~N/A</span><br \><span class = "dilution\_IF">IF~~1:50~200</span><br \><span class = "dilution\_ICC">ICC~~N/A</span><br \><span class = "dilution\_E">E~~N/A</span>

### Storage

Store at -20 °C for one year. Avoid repeated freeze/thaw cycles. When reconstituted in sterile pH 7.4 0.01M PBS or diluent of antibody the antibody is stable for at least two weeks at 2-4 °C.

## C1orf216 Polyclonal Antibody - Protein Information

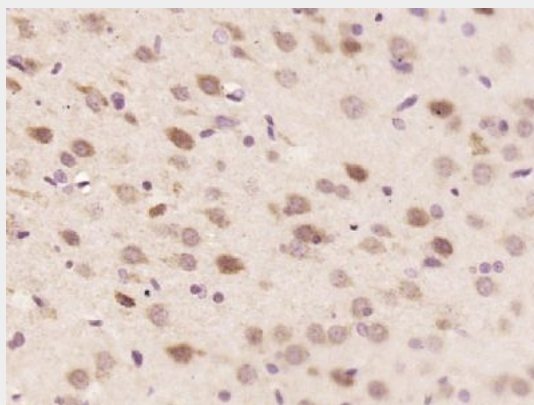
**Name** C1orf216

## C1orf216 Polyclonal Antibody - Protocols

Provided below are standard protocols that you may find useful for product applications.

- [Western Blot](#)
- [Blocking Peptides](#)
- [Dot Blot](#)
- [Immunohistochemistry](#)
- [Immunofluorescence](#)
- [Immunoprecipitation](#)
- [Flow Cytometry](#)
- [Cell Culture](#)

## C1orf216 Polyclonal Antibody - Images



Paraformaldehyde-fixed, paraffin embedded (rat brain tissue); Antigen retrieval by boiling in sodium citrate buffer (pH6.0) for 15min; Block endogenous peroxidase by 3% hydrogen peroxide for 20 minutes; Blocking buffer (normal goat serum) at 37°C for 30min; Antibody incubation with (C1orf216) Polyclonal Antibody, Unconjugated (bs-15058R) at 1:400 overnight at 4°C, followed by operating according to SP Kit(Rabbit) (sp-0023) instructions and DAB staining.