

C1orf226 Polyclonal Antibody
Purified Rabbit Polyclonal Antibody (Pab)
Catalog # AP55767**Specification**

C1orf226 Polyclonal Antibody - Product Information

Application	WB, IHC-P, IHC-F, IF, ICC, E
Primary Accession	A1L170
Host	Rabbit
Clonality	Polyclonal
Calculated MW	29 KDa
Physical State	Liquid
Immunogen	KLH conjugated synthetic peptide derived from human C1orf226
Epitope Specificity	181-272/272
Isotype	IgG
Purity	
affinity purified by Protein A	
Buffer	0.01M TBS (pH7.4) with 1% BSA, 0.02% Proclin300 and 50% Glycerol.
Important Note	This product as supplied is intended for research use only, not for use in human, therapeutic or diagnostic applications.

C1orf226 Polyclonal Antibody - Additional Information**Gene ID** 400793**Other Names**

Uncharacterized protein C1orf226, C1orf226

Dilution

WB~~1:1000<br \>IHC-P~~N/A<br \>IHC-F~~N/A<br \>IF~~1:50~200<br \>ICC~~N/A<br \>E~~N/A

Storage

Store at -20 °C for one year. Avoid repeated freeze/thaw cycles. When reconstituted in sterile pH 7.4 0.01M PBS or diluent of antibody the antibody is stable for at least two weeks at 2-4 °C.

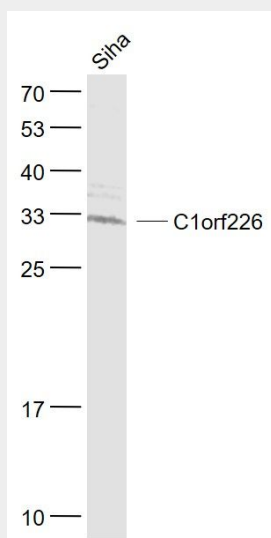
C1orf226 Polyclonal Antibody - Protein Information**Name** C1orf226

C1orf226 Polyclonal Antibody - Protocols

Provided below are standard protocols that you may find useful for product applications.

- [Western Blot](#)
- [Blocking Peptides](#)
- [Dot Blot](#)
- [Immunohistochemistry](#)
- [Immunofluorescence](#)
- [Immunoprecipitation](#)
- [Flow Cytometry](#)
- [Cell Culture](#)

C1orf226 Polyclonal Antibody - Images



Sample:

SiHa(Human) Cell Lysate at 30 ug

Primary: Anti- C1orf226 (bs-15060R) at 1/1000 dilution

Secondary: IRDye800CW Goat Anti-Rabbit IgG at 1/20000 dilution

Predicted band size: 29 kD

Observed band size: 30 kD