

C20orf186 Polyclonal Antibody
Purified Rabbit Polyclonal Antibody (Pab)
Catalog # AP55799**Specification**

C20orf186 Polyclonal Antibody - Product Information

Application	WB
Primary Accession	P59827
Reactivity	Rat, Dog
Host	Rabbit
Clonality	Polyclonal
Calculated MW	65055

C20orf186 Polyclonal Antibody - Additional Information**Gene ID** 149954**Other Names**

BPI fold-containing family B member 4, Ligand-binding protein RY2G5, Long palate, lung and nasal epithelium carcinoma-associated protein 4, BPIFB4, C20orf186, LPLUNC4

Format

0.01M TBS(pH7.4), 0.09% (W/V) sodium azide and 50% Glyce

Storage

Store at -20 °C for one year. Avoid repeated freeze/thaw cycles. When reconstituted in sterile pH 7.4 0.01M PBS or diluent of antibody the antibody is stable for at least two weeks at 2-4 °C.

C20orf186 Polyclonal Antibody - Protein Information**Name** BPIFB4**Synonyms** C20orf186, LPLUNC4**Function**

May have the capacity to recognize and bind specific classes of odorants. May act as a carrier molecule, transporting odorants across the mucus layer to access receptor sites. May serve as a primary defense mechanism by recognizing and removing potentially harmful odorants or pathogenic microorganisms from the mucosa or clearing excess odorant from mucus to enable new odorant stimuli to be received (By similarity).

Cellular Location

Secreted. Cytoplasm

Tissue Location

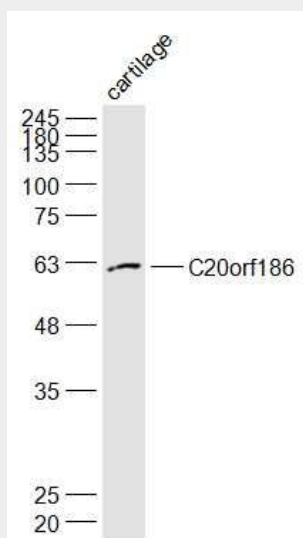
Expressed in nasal tissue.

C20orf186 Polyclonal Antibody - Protocols

Provided below are standard protocols that you may find useful for product applications.

- [Western Blot](#)
- [Blocking Peptides](#)
- [Dot Blot](#)
- [Immunohistochemistry](#)
- [Immunofluorescence](#)
- [Immunoprecipitation](#)
- [Flow Cytometry](#)
- [Cell Culture](#)

C20orf186 Polyclonal Antibody - Images



Sample:

Cartilage (Mouse) Lysate at 40 ug

Primary: Anti-C20orf186 (bs-15102R) at 1/1000 dilution

Secondary: IRDye800CW Goat Anti-Rabbit IgG at 1/20000 dilution

Predicted band size: 63 kD

Observed band size: 62 kD