

c20orf72 Polyclonal Antibody
Purified Rabbit Polyclonal Antibody (Pab)
Catalog # AP55808**Specification**

c20orf72 Polyclonal Antibody - Product Information

Application	WB, IHC-P, IHC-F, IF, ICC, E
Primary Accession	Q9BQP7
Reactivity	Rat, Dog, Bovine
Host	Rabbit
Clonality	Polyclonal
Calculated MW	39 KDa
Physical State	Liquid
Immunogen	KLH conjugated synthetic peptide derived from human c20orf72
Epitope Specificity	201-300/344
Isotype	IgG
Purity	
affinity purified by Protein A	
Buffer	0.01M TBS (pH7.4) with 1% BSA, 0.02% Proclin300 and 50% Glycerol.
SUBCELLULAR LOCATION	Mitochondrion.
SIMILARITY	Belongs to the MGME1 family.
DISEASE	Note=Defects in MGME1 are a cause of cause of progressive external ophthalmoplegia with mitochondrial DNA deletions (PEOAX). progressive external ophthalmoplegia with mitochondrial DNA deletions is characterized by external ophthalmoplegia, emaciation and respiratory failure. Muscle biopsies show mtDNA depletion and multiple mtDNA deletions.
Important Note	This product as supplied is intended for research use only, not for use in human, therapeutic or diagnostic applications.

Background Descriptions

Representing about 2% of human DNA, chromosome 20 consists of approximately 63 million bases and 600 genes. Chromosome 20 contains a region with numerous genes expressed in the epididymis, which are thought important for seminal production, and some viewed as potential targets for male contraception. The PRNP gene encoding the prion protein associated with spongiform encephalopathies, like Creutzfeldt-Jakob disease, is found on chromosome 20. Amyotrophic lateral sclerosis, spinal muscular atrophy, ring chromosome 20 epilepsy syndrome and Alagille syndrome are also associated with chromosome 20. The C20orf72 gene product has been provisionally designated C20orf72 pending further characterization.

c20orf72 Polyclonal Antibody - Additional Information

Gene ID 92667**Other Names**

Mitochondrial genome maintenance exonuclease 1 {ECO:0000255|HAMAP-Rule:MF_03030}, 3.1.-.- {ECO:0000255|HAMAP-Rule:MF_03030}, MGME1 {ECO:0000255|HAMAP-Rule:MF_03030}, C20orf72, DDK1

Dilution

WB~~1:1000<br \>IHC-P~~N/A<br \>IHC-F~~N/A<br \>IF~~1:50~200<br \>ICC~~N/A<br \>E~~N/A

Format

0.01M TBS(pH7.4), 0.09% (W/V) sodium azide and 50% Glyce

Storage

Store at -20 °C for one year. Avoid repeated freeze/thaw cycles. When reconstituted in sterile pH 7.4 0.01M PBS or diluent of antibody the antibody is stable for at least two weeks at 2-4 °C.

c20orf72 Polyclonal Antibody - Protein Information

Name MGME1 {ECO:0000255|HAMAP-Rule:MF_03030}

Synonyms C20orf72, DDK1

Function

Metal-dependent single-stranded DNA (ssDNA) exonuclease involved in mitochondrial genome maintenance. Has preference for 5'-3' exonuclease activity but is also capable of endonuclease activity on linear substrates. Necessary for maintenance of proper 7S DNA levels. Probably involved in mitochondrial DNA (mtDNA) repair, possibly via the processing of displaced DNA containing Okazaki fragments during RNA- primed DNA synthesis on the lagging strand or via processing of DNA flaps during long-patch base excision repair. Specifically binds 5-hydroxymethylcytosine (5hmC)-containing DNA in stem cells.

Cellular Location

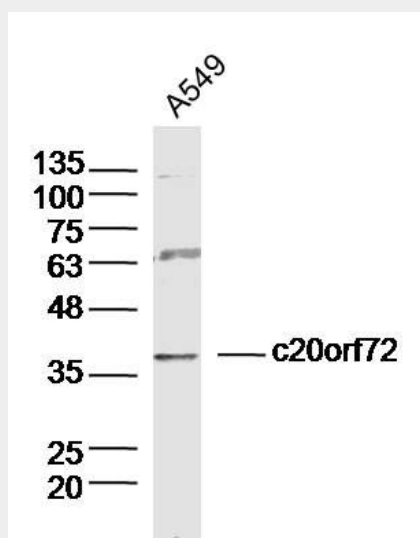
Mitochondrion {ECO:0000255|HAMAP-Rule:MF_03030, ECO:0000269|PubMed:23313956, ECO:0000269|PubMed:23358826}

c20orf72 Polyclonal Antibody - Protocols

Provided below are standard protocols that you may find useful for product applications.

- [Western Blot](#)
- [Blocking Peptides](#)
- [Dot Blot](#)
- [Immunohistochemistry](#)
- [Immunofluorescence](#)
- [Immunoprecipitation](#)
- [Flow Cytometry](#)
- [Cell Culture](#)

c20orf72 Polyclonal Antibody - Images

**Sample:**

A549 Cell (Human) Lysate at 30 ug

Primary: Anti- c20orf72 (bs-15115R) at 1/300 dilution

Secondary: IRDye800CW Goat Anti-Rabbit IgG at 1/20000 dilution

Predicted band size: 39kD

Observed band size: 39kD